

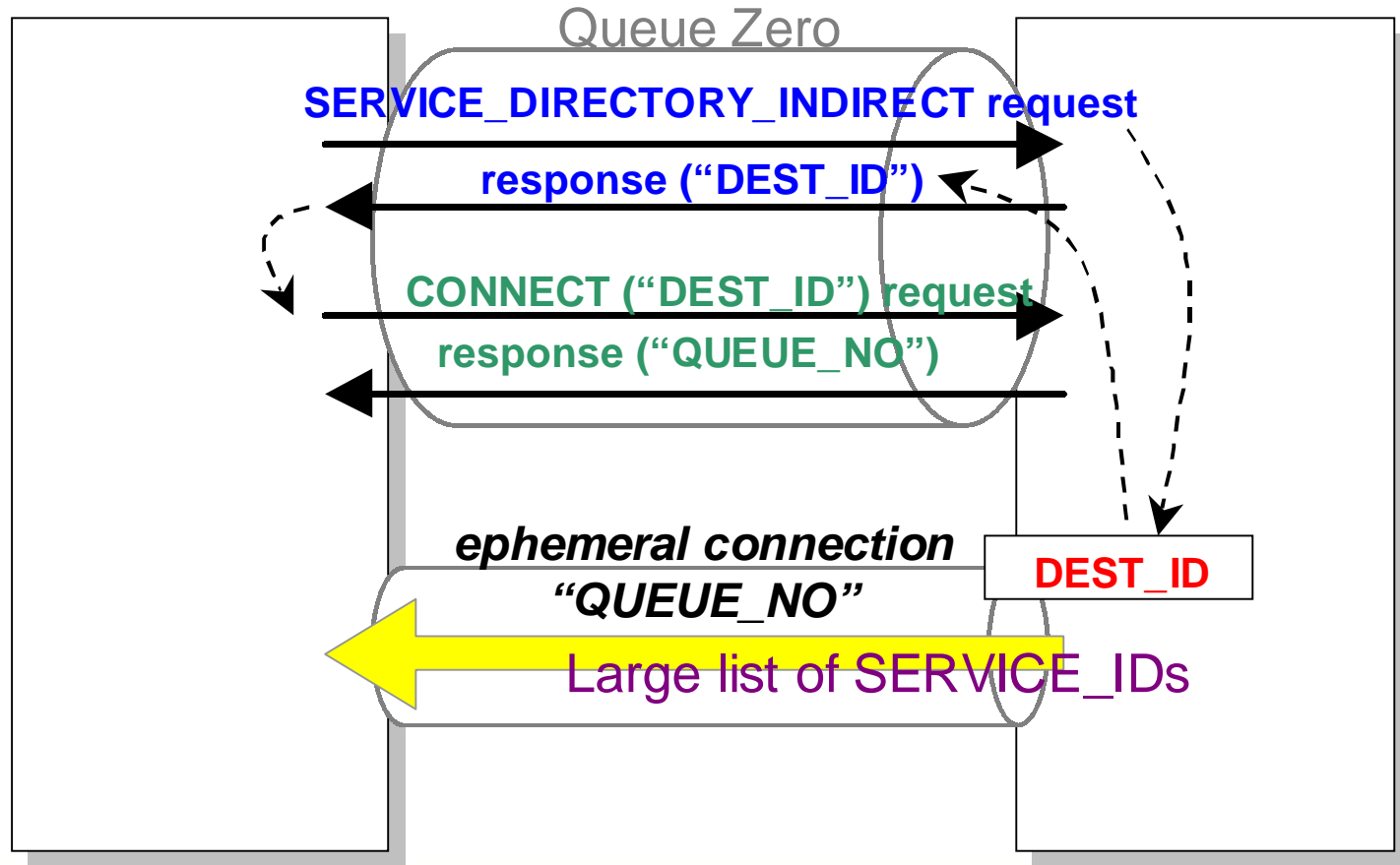
Service Discovery Protocol

August 16, 1999
Akihiro Shimura
CANON INC.

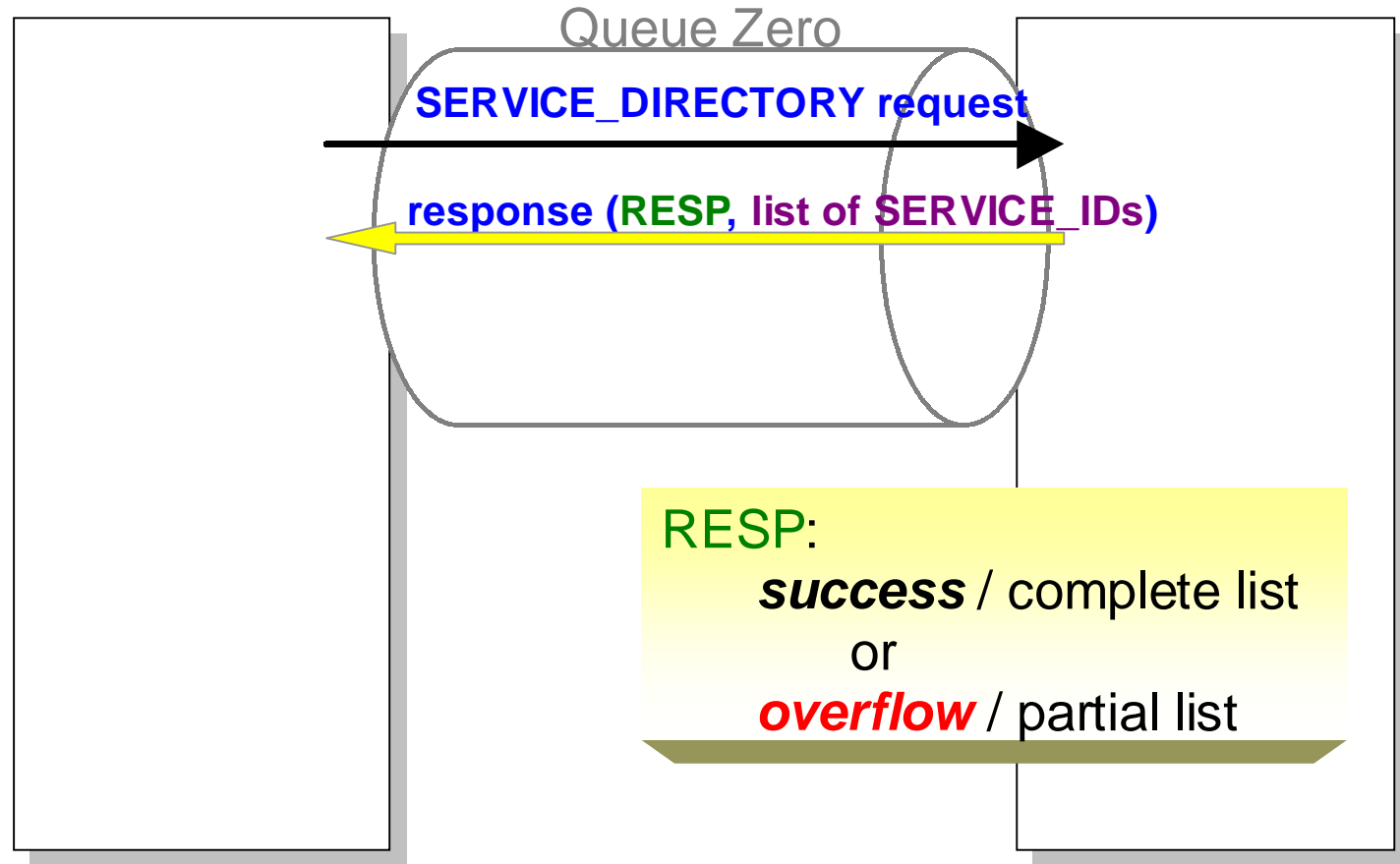
Summary of the Protocol

- **The protocol enables to retrieve a large list that does not fit into single buffer without interfering the other control operations.**
- **Defines new control function “SERVICE_DIRECTORY_INDIRECT” in addition to the “SERVICE_DIRECTORY”.**
- **The “SERVICE_DIRECTORY_INDIRECT” uses an ephemeral connection to deliver a large list.**

“SERVICE_DIRECTORY_INDIRECT” operation



"SERVICE_DIRECTORY" operation



Operations Summary

- **“SERVICE_DISCOVERY”**
 - The response is a list of **SERVICE_IDs**.
 - If the list does not fit into a single buffer, response code indicates **“overflow”** and the list is truncated.
- **“SERVICE_DIRECTORY_INDIRECT”**
 - The response is a **“DEST_ID”** parameter.
 - Requester connects to the **“DEST_ID”** and responder sends a list of **SERVICE_IDs** over established connection.
 - If the connection is aborted in the middle of the transfer, the list may be incomplete.