

1 INTERNET-DRAFT - 17 ISSUES are numbered and highlighted like this  
2 <draft-ietf-ipp-ops-set2-01.txt>

Carl Kugler  
IBM Corporation  
T. Hastings  
Xerox Corporation  
H. Lewis  
IBM Corporation  
October 29 ~~November 16~~, 1999

## Internet Printing Protocol/1.1: Set2 Operations

### Status of this Memo

This document is an Internet-Draft and is in full conformance with all provisions of Section 10 of [RFC2026]. Internet-Drafts are working documents of the Internet Engineering Task Force (IETF), its areas, and its working groups. Note that other groups may also distribute working documents as Internet-Drafts.

Internet-Drafts are draft documents valid for a maximum of six months and may be updated, replaced, or obsoleted by other documents at any time. It is inappropriate to use Internet-Drafts as reference material or to cite them other than as "work in progress".

The list of current Internet-Drafts can be accessed at <http://www.ietf.org/ietf/1id-abstracts.txt>

The list of Internet-Draft Shadow Directories can be accessed as <http://www.ietf.org/shadow.html>.

### Abstract

This document specifies 14 additional OPTIONAL operations for use with the Internet Printing Protocol/1.0 (IPP) [RFC2565, RFC2566] and IPP/1.1 [ipp-mod, ipp-pro]. These operations are 7 Printer object operations that operators/administrators may perform on a Printer object:

- Set-Printer-Attributes
- Enable-Printer
- Disable-Printer
- Restart-Printer
- Shutdown-Printer

and 7 Job object operations that end-users may perform on their jobs and operators/administrators may perform on any job, depending on circumstances:

- Set-Job-Attributes
- Reprocess-Job
- Cancel-Current-Job (though the target is the Printer object)
- Pause-Current-Job (though the target is the Printer object)
- Resume-Job
- Promote-Job

38 The Interpreter object is added for those implementations that make a distinction on the values of some  
39 Printer attributes depending on the document-format, such as "resolution-supported".

40 In addition, two operation attributes are defined: "printer-message-from-operator" and "job-message-from-  
41 operator" are included to set the corresponding Printer and Job Description attributes with the same names.  
42 And the "when" operation attribute is added to the IPP/1.1 Pause-Printer operation as well as some of the  
43 Set2 Printer operations.

44 New Printer Description attributes are added, along with additional values for the "printer-state-reasons"  
45 and "job-state-reasons" attributes.

46 New status codes: 'client-error-attributes-not-settable' and 'server-error-printer-is-in-standby-mode' are  
47 added.

48 Finally, the 'not-settable' out-of-band value is added for use with the Set-Printer-Attributes and Set-Job-  
49 Attributes operations.

50 The scope of IPP, is characterized in RFC2526 "Design Goals for an Internet Printing Protocol". It is not  
51 the intent of this document to revise or clarify this scope or conjecture as to the degree of industry adoption  
52 or trends related to IPP within printing systems. It is the intent of this document to extend the original set  
53 of operations - in a similar fashion to the Set1 extensions which referred to IPP/1.0 and were later  
54 incorporated into IPP/1.1.

55 This document is intended for registration following the registration procedures of IPP/1.0 [RFC2566] and  
56 IPP/1.1 [ipp-mod]. This version includes the comments discussed at the IPP telecon, on 6/23/1999,  
57 6/30/1999, at the IETF IPP WG meeting, 7/7/99-7/8/99, in Copenhagen, and the IPP telecon, 7/17/1999, the  
58 August, 1999 IPP meeting in Alaska and subsequent phone conferences and discussions. Specifically, the  
59 9/16 update refers to this set of extensions simply as "Set2" rather than using the term "Administrative"  
60 which was misleading, controversial and incorrect as an overall description. Also, two new attributes have  
61 been proposed to clarify the intent of each operation in terms of its target, the Printer vs. the Print Job.  
62 **Unresolved ISSUES are highlighted like this in the .doc and .pdf files.**

63 The full set of IPP documents includes:

- 64 Design Goals for an Internet Printing Protocol [RFC2567]
- 65 Rationale for the Structure and Model and Protocol for the Internet Printing Protocol [RFC2568]
- 66 Internet Printing Protocol/1.1: Model and Semantics (this document)
- 67 Internet Printing Protocol/1.1: Encoding and Transport [IPP-PRO]
- 68 Internet Printing Protocol/1.1: Implementer's Guide [IPP-IIG]
- 69 Mapping between LPD and IPP Protocols [RFC2569]

70

71 The "Design Goals for an Internet Printing Protocol" document takes a broad look at distributed printing  
72 functionality, and it enumerates real-life scenarios that help to clarify the features that need to be included  
73 in a printing protocol for the Internet. It identifies requirements for three types of users: end users,  
74 operators, and administrators. It calls out a subset of end user requirements that are satisfied in IPP/1.0. A  
75 few OPTIONAL operator operations have been added to IPP/1.1.

76 The "Rationale for the Structure and Model and Protocol for the Internet Printing Protocol" document  
77 describes IPP from a high level view, defines a roadmap for the various documents that form the suite of  
78 IPP specification documents, and gives background and rationale for the IETF working group's major  
79 decisions.

80 The "Internet Printing Protocol/1.1: Encoding and Transport" document is a formal mapping of the abstract  
81 operations and attributes defined in the model document onto HTTP/1.1 [RFC2616]. It defines the  
82 encoding rules for a new Internet MIME media type called "application/ipp". This document also defines  
83 the rules for transporting over HTTP a message body whose Content-Type is "application/ipp". This  
84 document defines a new scheme named 'ipp' for identifying IPP printers and jobs.

85 The "Internet Printing Protocol/1.1: Implementer's Guide" document gives insight and advice to  
86 implementers of IPP clients and IPP objects. It is intended to help them understand IPP/1.1 and some of the  
87 considerations that may assist them in the design of their client and/or IPP object implementations. For  
88 example, a typical order of processing requests is given, including error checking. Motivation for some of  
89 the specification decisions is also included.

90 The "Mapping between LPD and IPP Protocols" document gives some advice to implementers of gateways  
91 between IPP and LPD (Line Printer Daemon) implementations.

92

**Table of Contents**

93	1	Introduction .....	6
94	2	New objects and new relationships of existing objects .....	6
95	2.1	Interpreter object .....	6
96	2.2	Use of the Printer object to represent IPP Printer fan-out and IPP Printer fan-in .....	7
97	2.2.1	IPP Printer fan-out .....	7
98	2.2.2	IPP Printer fan-in .....	7
99	2.2.3	Printer object attributes used to represent Printer fan-out and Printer fan-in .....	7
100	2.2.4	Printer object attributes used to represent output device fan-out .....	9
101	2.2.5	Figures to show all possible configurations .....	10
102	2.3	Forwarding requests .....	12
103	2.3.1	Forwarding requests that affect Printer objects .....	12
104	2.3.2	Forwarding requests that affect Jobs .....	13
105	3	New Operation attributes .....	14
106	3.1	New operation attribute: "printer-message-from-operator" (text(127)) .....	14
107	3.2	New operation attribute: "job-message-from-operator" (text(127)) .....	16
108	3.3	New operation attribute for Get-Printer-Attributes: "factory-settings" (boolean) .....	17
109	3.4	New operation attribute for Pause-Printer: "when" (type2 keyword) .....	17
110	3.5	Summary of the operation attributes for the Printer operations .....	18
111	3.6	Summary of the operation attributes for the Job operations .....	18
112	4	New Printer Description Attributes .....	19
113	4.1	printer-settable-attributes (1setOf type2 keyword) .....	19
114	4.2	job-settable-attributes (1setOf type2 keyword) .....	20
115	4.3	printer-controls-other-protocols (boolean) .....	20
116	4.4	printer-message-time (integer(MIN:MAX)) .....	21
117	4.5	printer-message-date-time (dateTime) .....	22
118	4.6	printer-message-operation (type2 keyword) .....	22
119	4.7	subordinate-printers-supported (1setOf uri) .....	23
120	5	Additional values for "printer-state-reasons" and "job-state-reasons" attributes .....	23
121	5.1	Value for "printer-state-reasons": 'standby' .....	23
122	5.2	Value for "job-state-reasons": 'job-paused' .....	23
123	6	New status codes .....	24
124	6.1	New status code: 'client-error-attributes-not-settable' .....	24
125	6.2	New status code: 'server-error-printer-is-in-standby-mode' .....	24
126	7	New out-of-band values .....	25
127	7.1	'not-settable' out of band value .....	25
128	8	Summary of Set 2 operations and Operation-Id Assignments .....	25

129	8.1	Printer Operations .....	26
130	8.1.1	Set-Printer-Attributes Operation .....	26
131	8.1.2	Disable-Printer Operation .....	31
132	8.1.3	Enable-Printer Operation .....	32
133	8.1.4	Restart-Printer operation .....	33
134	8.1.5	Shutdown-Printer Operation .....	35
135	8.2	Job Operations .....	37
136	8.2.1	Set-Job-Attributes .....	37
137	8.2.2	Reprocess-Job Operation .....	41
138	8.2.3	Cancel-Current-Job Operation .....	42
139	8.2.4	Pause-Current-Job operation.....	43
140	8.2.5	Resume-Job operation.....	45
141	8.2.6	Promote-Job operation .....	46
142	9	IANA Considerations .....	47
143	10	Internationalization Considerations.....	47
144	11	Security Considerations.....	47
145	12	Author's Addresses .....	47
146	13	References .....	48
147	14	Change History.....	48
148	14.1	Changes to the October 22, 1999 version to make the November 1, 1999 version .....	48
149	14.2	Changes to the September 19, 1999 version to make the October 22, 1999 version.....	49
150	14.3	Changes to the July 19, 1999 version to make the September 19, 1999 version.....	50
151	14.4	Changes to the June 30, 1999 version to make the July 19, 1999 version.....	50
152	15	Appendix A: Full Copyright Statement.....	52
153			
154		<b><u>List of Tables</u></b>	
155		Table 1 - Forwarding operations that affect Printer objects .....	12
156		Table 2 - Forwarding operations that affect Jobs objects .....	13
157			
158			
159		<b><u>List of Figures</u></b>	
160		Figure 1 - embedded Printer object .....	10
161		Figure 2 - hosted Printer object .....	10
162		Figure 3 - output device fan out.....	10
163		Figure 4 - IPP Printer fan out.....	11
164		Figure 5 - IPP Printer fan in.....	11
165			

## 166 1 Introduction

167 The Internet Printing Protocol (IPP) is an application level protocol that can be used for distributed printing  
168 using Internet tools and technologies. IPP version 1.1 (IPP/1.1) focuses on end user functionality with a  
169 few administrative operations included. This document defines additional OPTIONAL end user, operator,  
170 and administrator operations used to control Jobs and Printers. This document is a registration proposal for  
171 an extension to IPP/1.0 and IPP/1.1 following the registration procedures in those documents.

172 2 New objects and new relationships of existing objects

173 This section defines the new Interpreter object and the use of the IPP Printer object to represent IPP Printer  
174 fan-out and IPP Printer fan-in.

## 175 2.1 Interpreter object

176 The Interpreter object models the document format interpreters that are contained in the Printer object. The  
177 purpose of the Interpreter object is to model those Printer attributes whose value depends on which  
178 interpreter is being used to process the document. Depending on implementation, the Printer object  
179 attributes whose values ("xxx-supported" and "xxx-default") depend on the interpreter, i.e., on the  
180 "document-format" of the document being processed, are considered to be Interpreter object attributes  
181 instead. A Get-Printer-Attributes operation returns Printer and Interpreter attributes as specified in the  
182 "requested-attributes" operation attribute supplied by the client. Depending on the value of the "document-  
183 format" attribute supplied by the client in the Get-Printer-Attributes request (or the "document-format-  
184 default", if the client omits the "document-format" attribute), selects the corresponding Interpreter object.

185 If an implementation does not make a distinction on the values of Printer attributes by document format,  
186 say, for purposes of job validation (see [ipp-mod] Get-Printer-Attributes), there is no need to implement or  
187 support the Interpreter object. The Interpreter object is introduced to provide a means to model an  
188 implementation in which some attributes do depend on the document format. Those attributes are then sub-  
189 classed to be Interpreter object attributes.

190 Note: the addition of the Interpreter object is completely compatible with IPP/1.0 and IPP/1.1 (see the  
191 description of the "document-format" operation attribute in [ipp-mod] section 3.2.5.1 Get-Printer-Attributes  
192 request). The protocol and semantics are the same whether or not the Interpreter object is used to  
193 distinguish attributes that depend on the "document-format". Consequently, there is no "interpreters-  
194 supported" Printer Description attribute. In order to determine which Interpreter objects there MAY be, the  
195 client can request the values of the Printer's "document-format-supported" attribute.

196 Note: The Interpreter object is really a sub-class of the Printer object, rather than being a full fledged object  
197 in the sense that the Job and Printer objects are. There are no operations defined solely for the Interpreter  
198 object. The Get-Printer-Attributes and Set-Printer-Attributes operations operate on the Interpreter object if  
199 the implementation has the concept of an Interpreter object. However, if the IPP Printer implementation

200 does not contain Interpreter objects, the same Interpreter object attributes are considered Printer object  
201 attributes, instead.

## 202 2.2 Use of the Printer object to represent IPP Printer fan-out and IPP Printer fan-in

203 This section defines how the Printer object MAY be used to represent IPP Printer fan-out and IPP Printer  
204 fan-in. Fan-out is where an IPP Printer is used to represent other IPP Printer objects. Fan-in is where  
205 several IPP Printer objects are used to represent another IPP Printer object.

### 206 2.2.1 IPP Printer fan-out

207 The IPP/1.1 Model and Semantics introduces the semantic concept of an IPP Printer object that represents  
208 more than one output device (see [ipp-mod] section 2.1). This concept is called "output device fan-out".  
209 However, there was no way to represent the individual states of the output devices or to perform operations  
210 on ~~selected~~ a specific output device when there was fan-outs. This specification generalizes the semantics  
211 of the Printer object to represent such "subordinate" fan-out output devices as IPP Printer objects. This  
212 concept is called "Printer object fan-out". A Printer object that has a subordinate Printer object is called a  
213 "non-leaf" Printer object. Thus a "~~parent~~non-leaf" Printer object MAY support ~~two~~ one or more  
214 subordinate Printer objects in order to represent Printer object fan-out. -A Printer object that does not have  
215 any subordinate Printer objects is called a "leaf" Printer object.

### 216 2.2.2 IPP Printer fan-in

217 The IPP/1.1 Model and Semantics did not preclude the semantic concept of multiple IPP Printer objects that  
218 represent a single output device (see [ipp-mod] section 2.1). However, there was no way for the client to  
219 determine that there was a fan-in configuration, nor was there a way to perform operations on the  
220 subordinate device. This specification generalizes the semantics of the Printer object to allow several "non-  
221 leaf" IPP Printer objects to represent a single "subordinate" Printer object. Thus a "non-leaf" Printer object  
222 MAY share a subordinate Printer object with one or more other non-leaf Printer objects in order to  
223 represent IPP Printer fan-in. As with fan-out (see section 2.2), when a Printer object is a non-leaf, it MUST  
224 NOT have an associated output device. As with fan-out, a leaf Printer object has an associated output  
225 device(s). As with fan-out, the non-leaf Printer objects submit jobs to their subordinate Printer objects and  
226 otherwise control the subordinate Printer. As with fan-out, whether pending jobs are kept in the non-leaf  
227 Printers until the subordinate Printer can accept them or are kept in the subordinate Printer depends on  
228 implementation and/or configuration policy.

### 229 2.2.3 Printer object attributes used to represent Printer fan-out and Printer fan-in

230 Each non-leaf Printer object submits jobs to its immediate subordinate Printers and otherwise controls the  
231 subordinate Printers using IPP or other protocols. Whether pending jobs are kept in the non-leaf Printer  
232 until a subordinate Printer can accept them or are kept in the subordinate Printers depends on  
233 implementation and/or configuration policy. Furthermore, a subordinate Printer object MAY, in turn, have  
234 subordinate Printer objects. Thus a Printer object can be both a non-leaf Printer and a subordinate Printer.



235 A subordinate Printer object MUST be a conforming Printer object, so it MUST support all of the  
236 REQUIRED operations and attributes. However, with access control, the subordinate Printer MAY be  
237 configured so that end-user clients are not permitted to perform any operations (or just Get-Printer-  
238 Attributes) while one or more non-leaf Printer object(s) are permitted to perform any operation.

239 ~~Such a~~The following Printer Description attributes are defined to represent the relationship between Printer  
240 object(s) and their subordinate Printer object(s):

241 1. "subordinate-printers-supported" (1setOf uri) - contains the URI of the immediate subordinate Printer  
242 object(s). Each ~~parent~~non-leaf Printer object MUST support this Printer Description attribute. A leaf  
243 Printer object either does not support the "subordinate-printers-supported" attribute or does so with the  
244 'no-value' out-of-band value (see [ipp-mod] section 4.1).

245 2. "parent-printers-supported (1setOf uri) - contains the URI of the non-leaf printer object(s) for which this  
246 Printer object is the immediate subordinate, i.e., this Printer's immediate "parent" or "parents". Each  
247 subordinate Printer object MUST support this Printer Description attribute. A Printer that has no  
248 parents, either does not support the "parent-printers-supported" attribute or does so with the 'no-value'  
249 out-of-band value (see [ipp-mod] section 4.1).

250 ~~A conforming subordinate Printer object NEED NOT support all of the REQUIRED operations. For~~  
251 ~~example a subordinate Printer NEED NOT support a Print Job operation, unless it is a networked printer~~  
252 ~~that supports the IPP Protocol. In such a case, the subordinate Printer MAY be configured so that its access~~  
253 ~~control list only permits the parent Printer to submit jobs to it. The degenerate case of a Printer having only~~  
254 ~~a single subordinate Printer is not allowed. A subordinate Printer MAY, in turn, have subordinate Printers.~~

255 ~~ISSUE 01—What sub-set of the REQUIRED IPP/1.1 operations MUST a subordinate Printer object~~  
256 ~~support? Get-Printer-Attributes? Any others?~~

257 ~~ISSUE 02—Are there any IPP Printer or Job operations that a subordinate Printer MUST NOT support?~~

258 ~~ISSUE 03—Are all the REQUIRED attributes of a Printer object REQUIRED for a subordinate Printer~~  
259 ~~object?~~

260 ~~The degenerate case of a Printer having only a single subordinate Printer is not allowed.~~

261 Each subordinate Printer object has a URI which is used as the target of each operation on the subordinate  
262 Printer. The means for configuring URIs for subordinate Printer objects is implementation-dependent as  
263 are all URIs. However, there are two distinct approaches:

264 a. When the implementation wants to make sure that no operation on a subordinate Printer object as  
265 a target "sneaks by" the parent Printer object (or the subordinate Printer is fronting for a device that  
266 is not networked), the host part of the URI specifies the host of the parent Printer. Then the parent  
267 Printer object can easily reflect the state of the subordinate Printer objects in the parent's Printer  
268 object state and state reasons as the operation passes "through" the parent Printer object.



269           b. When the subordinate Printer is networked and the implementation allows operations to go  
270 directly to the subordinate Printer (with proper access control) without knowledge of the parent  
271 Printer object, the host part of the URI is different than the host part of the parent Printer object. In  
272 such a case, the parent Printer object MUST keep its "printer-state" and "printer-state-reasons" up to  
273 date, either by polling the subordinate Printer object or by subscribing to events with the subordinate  
274 Printer object (see [ipp-not-spec] for means to do this when the subordinate Printer object supports  
275 IPP notification).

#### 276   2.2.4 Printer object attributes used to represent output device fan-out

277   When a Printer object is a non-leaf, it MUST NOT have an associated output device. Only leaf IPP Printer  
278 objects are allowed to have one or more associated output devices. Each leaf Printer object MAY support  
279 the "output-devices-supported" (1setOf name(127)) to indicate the user-friendly name(s) of the output  
280 device(s) that the leaf Printer object represents. It is RECOMMENDED that each leaf Printer object have  
281 only one associated output device, so that the individual output devices can be represented completely and  
282 controlled completely by clients. In other words, the Printer's "output-devices-supported" attribute  
283 SHOULD have only one value.

284

285 2.2.5 Figures to show all possible configurations

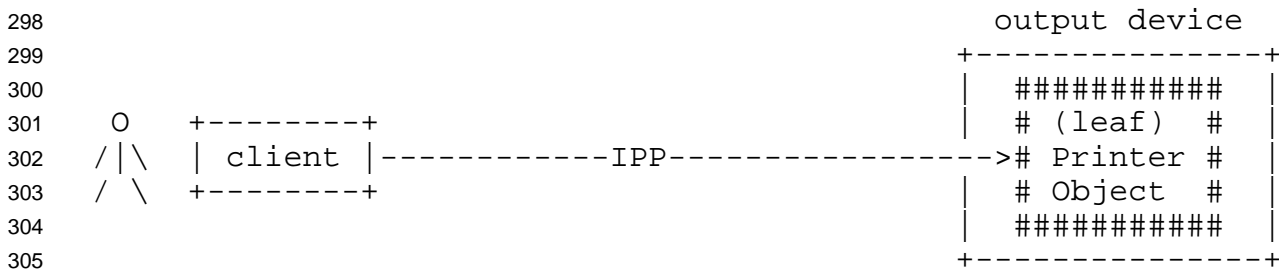
286 Figure 1, Figure 2, and Figure 3 are taken from [ipp-mod] to show the configurations possible with IPP/1.0  
287 and IPP/1.1 where all Printer objects are leaf Printer objects. The remaining figures show additional  
288 configurations that this document defines using non-leaf and leaf Printer objects. Legend for all figures:

289 ----> indicates a network protocol with the direction of its requests

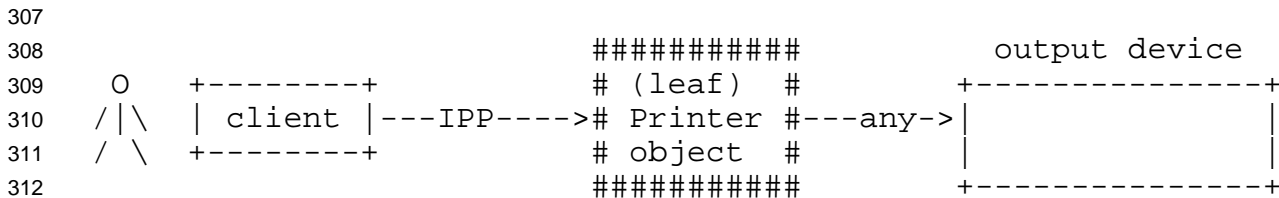
290 ##### indicates a Printer object which is either:  
291 - embedded in an output device or is

292 - hosted in a server. The Printer object  
293 might or might not be capable of queuing/spooling.

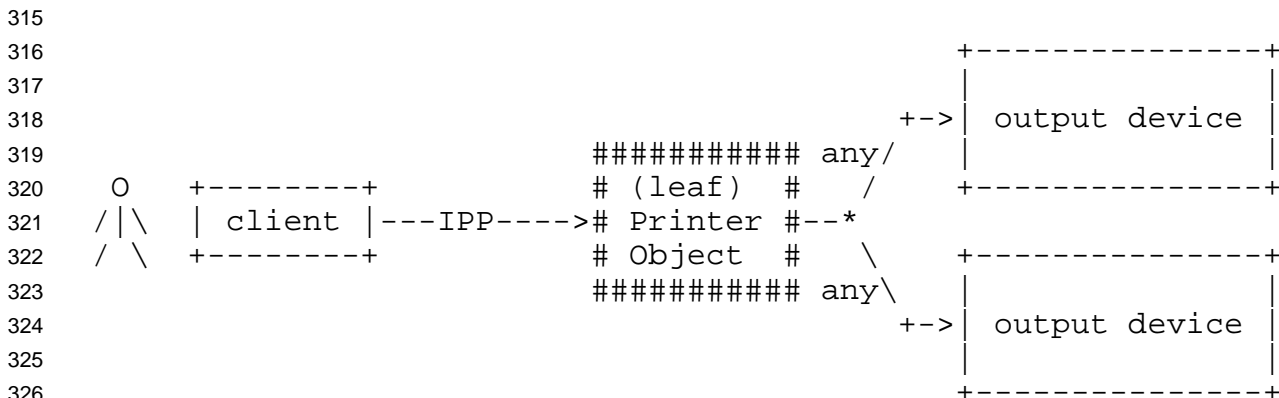
294 any indicates any network protocol or direct  
295 connect, including IPP



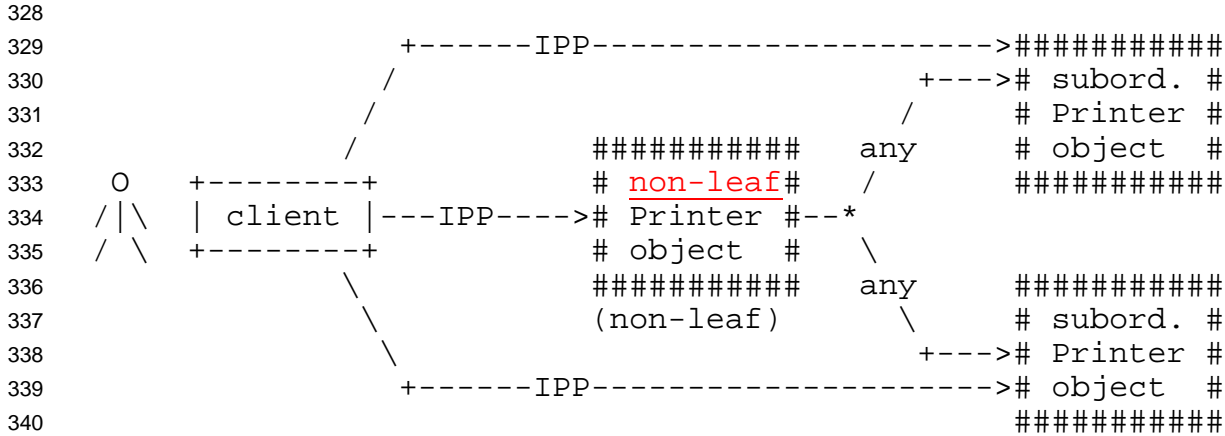
306 **Figure 1 - embedded Printer object**



313 **Figure 2 - hosted Printer object**

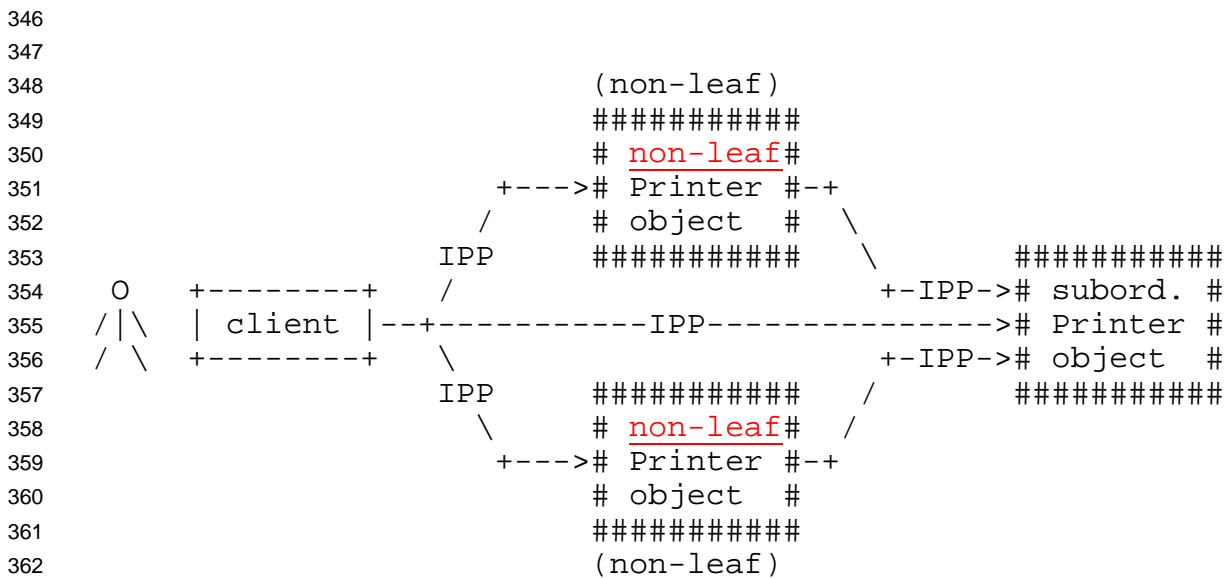


327 **Figure 3 - output device fan out**



The subordinate Printer can be a non-leaf Printer as in Figure 4 or Figure 5, or can be a leaf Printer as in Figure 1, Figure 2, or Figure 3.

Figure 4 - IPP Printer fan out



The subordinate Printer can be a non-leaf Printer as in Figure 4 or Figure 5, or can be a leaf Printer as in Figure 1, Figure 2, or Figure 3.

Figure 5 - IPP Printer fan in

2.3 Device object

In order to control the physical device, the Device object is introduced. Its semantics are defined in [ipp-set3]. The Device object has attributes that represent physical characteristics of the device, such as input trays, output bins, and finishing equipment. Thus the Printer object remains as the representative of a

372 ~~logical entity or service, while the Device object represents a physical entity. The operations in this Set2~~  
 373 ~~document operate only on Printer objects, not on Device objects. However, some of the Set2 Printer~~  
 374 ~~operations have analogous Device operations. For example, the Shutdown-Printer and Shutdown-Device~~  
 375 ~~operations are defined in Set2 and Set3, respectively.~~

376 2.3 Forwarding requests

377 This section describes the forwarding Job and Printer requests to subordinate Printer objects.

378 2.3.1 Forwarding requests that affect Printer objects

379 In both fan-out and fan-in, the non-leaf IPP Printer object MUST NOT forward the Printer operations that  
 380 affect Printer object to its subordinate Printer objects. If a client wants to explicitly target a subordinate  
 381 Printer, the client must specify the URI of the subordinate Printer. Table 1 lists the operations that affect  
 382 Printer objects and the forwarding behavior that a non-leaf Printer MUST exhibit to its immediate  
 383 subordinate Printers:

384 **Table 1 - Forwarding operations that affect Printer objects**

<u>Printer operation</u>	<u>Non-leaf Printer action</u>
<u>Set2 Printer operations:</u>	
<u>Set-Printer-Attributes</u>	<u>MUST NOT forward to any of its subordinate Printers</u>
<u>Enable-Printer</u>	<u>MUST NOT forward to any of its subordinate Printers</u>
<u>Disable-Printer</u>	<u>MUST NOT forward to any of its subordinate Printers</u>
<u>Restart-Printer</u>	<u>MUST NOT forward to any of its subordinate Printers</u>
<u>Shutdown-Printer</u>	<u>MUST NOT forward to any of its subordinate Printers</u>
<u>IPP/1.1 Printer operations:</u>	
<u>Get-Printer-Attribute</u>	<u>MUST NOT forward to any of its subordinate Printers</u>
<u>Pause-Printer</u>	<u>MUST NOT forward to any of its subordinate Printers</u>
<u>Resume-Printer</u>	<u>MUST NOT forward to any of its subordinate Printers</u>

385

386 **ISSUE 01-** Should the purpose of the corresponding device operations, such as Pause-Device, Disable-  
 387 Device, and Shutdown-Device (see [ipp-set3], to be forwarded by Printer objects to their subordinate  
 388 Printers down to the leaf Printers objects in order to affect their corresponding output device? Using device  
 389 operations in this way would relieve the operator client from having to work its way down the Printer object  
 390 chain in order to affect an output device of a leaf Printer object.

391 **ISSUE 02 -** If a Printer object MUST forward a device operation down to the leaf Printer objects, would  
 392 fanning out such forwarded device operations be too drastic? If yes, then maybe the device operations  
 393 would need an operation attribute to say whether or not to allow fan-out of device operations, with the  
 394 default value being 'false'.

395 **ISSUE 03** - Does the administrator need a Printer object attribute that says whether or not this Printer object  
 396 is to forward device operations when it has more than one subordinate Printer object? The default would be  
 397 'false'.

398 2.3.2 Forwarding requests that affect Jobs

399 Unlike Printer operations that only affect Printer objects (see section 2.3.1, a non-leaf Printer object MUST  
 400 forward operations that directly affect jobs to the appropriate Job object(s) in one or more of its immediate  
 401 subordinate Printer objects. Such forwarding MAY be immediate or queued, depending on the operation  
 402 and the implementation. For example, a non-leaf Printer object MAY queue/spool jobs, feeding a job at a  
 403 time to its subordinate Printer(s), or MAY forward jobs immediately to one of its subordinate Printers. In  
 404 either case, the non-leaf Printer object is forwarding Job Creation operations to one of its subordinate  
 405 Printers. Only the time of forwarding of the Job Creation operations depends on whether the policy is to  
 406 queue/spool jobs in the non-leaf Printer or the subordinate Printer.

407 When a non-leaf Printer object creates a Job object in its subordinate Printer, whether that non-leaf Printer  
 408 object keeps a fully formed Job object or just keeps a mapping from the "job-ids" that it assigned to those  
 409 assigned by its subordinate Printer object is IMPLEMENTATION-DEPENDENT. In either case, the non-  
 410 leaf Printer MUST be able to accept and carry out future Job operations that specify the "job-id" that the  
 411 non-leaf Printer assigned and returned to the job submitting client.

412 Table 2 lists the operations that directly affect jobs and the forwarding behavior that a non-leaf Printer  
 413 MUST exhibit to its subordinate Printers:

414 **Table 2 - Forwarding operations that affect Jobs objects**

<u>Job operation</u>	<u>Non-leaf Printer action</u>
<u>Set2 Job operations:</u>	
<u>Set-Job-Attributes</u>	<u>MUST forward to the appropriate Job in one of its subordinate Printers</u>
<u>Reprocess-Job</u>	<u>MUST forward to the appropriate Job in one of its subordinate Printers</u>
<u>Cancel-Current-Job</u>	<u>MUST forward to the appropriate Job in one of its subordinate Printers</u>
<u>Pause-Current-Job</u>	<u>MUST forward to the appropriate Job in one of its subordinate Printers</u>
<u>Resume-Job</u>	<u>MUST forward to the appropriate Job in one of its subordinate Printers</u>
<u>Promote-Job</u>	<u>MUST forward to the appropriate Job in one of its subordinate Printers</u>
<u>IPP/1.1 Printer operations:</u>	
<u>Print-Job</u>	<u>MUST forward immediately or queue to the appropriate subordinate Printer</u>
<u>Print-URI</u>	<u>MUST forward immediately or queue to the appropriate subordinate Printer</u>
<u>Validate-Job</u>	<u>MUST forward to the appropriate subordinate Printer</u>
<u>Create-Job</u>	<u>MUST forward immediately or queue to the appropriate subordinate Printer</u>
<u>Get-Jobs</u>	<u>MUST forward to all its subordinate Printers</u>
<u>Purge-Jobs</u>	<u>MUST forward to all its subordinate Printers</u>
<u>IPP/1.1 Job operations:</u>	

<u>Send-Document</u>	<u>MUST forward immediately or queue to the appropriate Job in one of its subordinate Printers</u>
<u>Send-URI</u>	<u>MUST forward immediately or queue to the appropriate Job in one of its subordinate Printers</u>
<u>Cancel-Job</u>	<u>MUST forward to the appropriate Job in one of its subordinate Printers</u>
<u>Get-Job-Attributes</u>	<u>MUST forward to the appropriate Job in one of its subordinate Printers, if the non-leaf Printer doesn't know the complete status of the Job object</u>
<u>Hold-Job</u>	<u>MUST forward to the appropriate Job in one of its subordinate Printers</u>
<u>Release-Job</u>	<u>MUST forward to the appropriate Job in one of its subordinate Printers</u>
<u>Restart-Job</u>	<u>MUST forward to the appropriate Job in one of its subordinate Printers</u>

415 ISSUE 04 : Do we want to define whether the response to the client for Job operations can happen before  
 416 the non-leaf Printer gets the response from its subordinate Printer or MUST the non-leaf Printer wait until  
 417 its gets the response from its subordinate Printer?

418 The following Job Description attributes are defined to help represent Job relationships for fan-out and  
 419 forwarding of jobs:

- 420 1. "output-device-assigned" (name(127)) - from [ipp-mod]: This attribute identifies the output device to  
 421 which the Printer object has assigned this job. If an output device implements an embedded Printer  
 422 object, the Printer object NEED NOT set this attribute. If a print server implements a Printer object, the  
 423 value MAY be empty (zero-length string) or not returned until the Printer object assigns an output  
 424 device to the job. This attribute is particularly useful when a single Printer object supports multiple  
 425 devices (so called "fan-out").
- 426 2. "original-requesting-user-name" (name(MAX)) - operation attribute containing the user name of the  
 427 original user, i.e., corresponds to the "requesting-user-name" operation attribute that the original client  
 428 supplied to the first Printer object.

429 ISSUE 05 - The "requesting-user-name" operation attribute is the parent Printer's host, not the original  
 430 requesting user, correct?)

431 ISSUE 06 - Presumably the "job-originating-user-name" remains as the authenticated original user, not the  
 432 parent Printer's authenticated host, correct?

### 433 3 New Operation attributes

434 This section defines the new "printer-message-from-operation" and "job-message-from-operator" operation  
 435 attributes that set the corresponding Printer and Job Description attributes.

#### 436 3.1 New operation attribute: "printer-message-from-operator" (text(127))

437 Type of registration: attribute

438 Proposed keyword name of this attribute: "printer-message-from-operator"

439 Types of attribute (Operation, Job Template, Job Description, Printer Description): Operation  
440 Operations to be used with if the attribute is an operation attribute: See below  
441 Object (Job, Printer, etc. if bound to an object): Printer (already in IPP/1.0 and IPP/1.1)  
442 Attribute syntax(es) (include 1setOf and range as in Section 4.2): text(127)

443  
444 Specification of this attribute (follow the style of IPP Model Section 4.2):

445  
446 "printer-message-from-operator" (text(127))

447 The client **OPTIONALLY** supplies this attribute. The Printer object **SHOULD** supports this  
448 operation attribute if it supports the corresponding Printer Description attribute. The value of this  
449 attribute is a message from the operator about the Printer object on which the operator is performing  
450 the operation. If supported, the Printer copies the value to the Printer's "printer-message-from-  
451 operator" Printer Description attribute (see [ipp-mod] section 4.4.25), automatically sets the value of  
452 the Printer's "printer-message-time" with the current value of the Printer's "printer-up-time"  
453 attribute, the value of the "printer-message-date-time" with the current value of the Printer's printer-  
454 current-date-time" attribute, and the value of the Printer's "printer-message-operation" with the  
455 operation-id value of this operation (see [ipp-mod] section 4.4.15).

456  
457 If the client omits this attribute, the Printer does not change the value of its "printer-message-from-  
458 operator", "printer-message-time", "printer-message-date-time", and "printer-message-operation"  
459 Printer Description attributes.

460  
461 If the client supplies this attribute with a zero-length text value or with a value consisting solely of  
462 white space, the Printer copies that value as any other value to the Printer's "printer-message-from-  
463 operator" and sets the "printer-message-time", "printer-message-date-time", and "printer-message-  
464 operation" attributes. Supplying such a value is the way that the operator indicates that there is no  
465 longer a printer message from the operator (rather than using the "out-of-band" 'no-value' value).

466

467 This operation attribute is defined for use with the following operator operations on the Printer object:

468 Pause-Printer - see [ipp-mod] section 3.2.7  
469 Resume-Printer - see [ipp-mod] section 3.2.8  
470 Purge-Jobs - see [ipp-mod] section 3.2.9  
471 Disable-Printer - see section 8.1.2  
472 Enable-Printer - see section 8.1.3  
473 Restart-Printer - see section 8.1.4  
474 Shutdown-Printer - see section 8.1.5

475

476 The "printer-message-from-operator" operation attribute **MUST NOT** be supported as an operation attribute  
477 for the Set-Printer-Attributes operation. If the operator wants to set the Printer's "printer-message-from-  
478 operator" Printer Description attribute when issuing the Set-Printer-Attributes operation, the client supplies  
479 the "printer-message-from-operator" with its new value as one of the Printer Description attributes in Group  
480 2 in the request. The Printer also updates the Printer's "printer-message-date-time" and "printer-message-  
481 operation" Printer Description attributes. If the client does not explicitly supply the "printer-message-from-



482 operator" with its new value, the Printer leaves the value of the Printer's "printer-message-from-operator"  
483 Printer Description attribute unchanged.

484 3.2 New operation attribute: "job-message-from-operator" (text(127))

485 Type of registration: attribute

486 Proposed keyword name of this attribute: "job-message-from-operator"

487 Types of attribute (Operation, Job Template, Job Description, Printer Description): Operation

488 Operations to be used with if the attribute is an operation attribute: See below

489 Object (Job, Printer, etc. if bound to an object): Job (already in IPP/1.0 and IPP/1.1)

490 Attribute syntax(es) (include 1setOf and range as in Section 4.2): text(127)

491

492 Specification of this attribute (follow the style of IPP Model Section 4.2):

493

494 "job-message-from-operator" (text(127))

495 The client **OPTIONALLY** supplies this attribute. The Printer object **SHOULD** supports this  
496 operation attribute if it supports the corresponding Job Description attribute. The value of this  
497 attribute is a message from the operator about the Job object on which the operator has just  
498 performed an operation. If supported, the Printer copies the value to the Job's "job-message-from-  
499 operator" Job Description attribute (see [ipp-mod] section 4.3.16).

500

501 If the client omits this attribute, the Printer does not change the value of its "printer-message-from-  
502 operator" Job Description attribute.

503

504 If the client supplies this attribute with a zero-length text value or with a value consisting solely of  
505 white space, the Printer copies that value as any other value to the job's "job-message-from-  
506 operator". Supplying such a value is the way that the operator indicates that there is no longer a job  
507 message from the operator (rather than using the "out-of-band" 'no-value' value).

508

509 Note: There are no corresponding 'job-message-time', 'job-message-date-time', and "job-message-  
510 operation" Job Description attributes, since the usual lifetime of a job is limited.

511

512 This operation attribute is defined for use with the following operator operations on the Job object:

513 Cancel-Job - see [ipp-mod] section 3.2.4

514 Hold-Job - see [ipp-mod] section 3.3.5

515 Release-Job - see [ipp-mod] section 3.3.6

516 Restart-Job - see [ipp-mod] section 3.3.7

517 Reprocess-Job - see section 8.2.2

518 Cancel-Current-Job - see section 8.2.3

519 Pause-Current-Job - see section 8.2.4

520 Resume-Job - see section 8.2.5

521 Promote-Job - see section 8.2.6

522

523 The "job-message-from-operator" operation attribute MUST NOT be supported as an operation attribute for  
524 the Set-Job-Attributes operation. If the operator wants to set the Job's "job-message-from-operator" Job  
525 Description attribute when issuing the Set-Job-Attributes operation, the client supplies the "job-message-  
526 from-operator" with its new value as one of the Job Description attributes in Group 2 in the request.  
527 Otherwise, the Printer leaves the value of the Job's "job-message-from-operator" Job Description attribute  
528 unchanged by not explicitly setting the attribute.

### 529 3.3 New operation attribute for Get-Printer-Attributes: "factory-settings" (boolean)

530 Type of registration: attribute

531 Proposed keyword name of this attribute: "factory-settings"

532 Types of attribute (Operation, Job Template, Job Description, Printer Description): Operation

533 Operations to be used with if the attribute is an operation attribute: Get-Printer-Attributes

534 Object (Job, Printer, etc. if bound to an object): N/A

535 Attribute syntax(es) (include 1setOf and range as in Section 4.2): boolean

536

537 Specification of this attribute (follow the style of IPP Model Section 4.2):

538 "factory-settings" (boolean)

539 The client OPTIONALLY supplies this attribute. The Printer object OPTIONALLY supports this  
540 attribute, if it supports the Set-Printer-Attributes operation. If the client omits this attribute or  
541 supplies the 'false' value, the Printer returns the current values of the requested attributes that are  
542 settable, i.e., the values that have been set by previous Set-Printer-Attributes. If the client supplies  
543 the 'true' value, the Printer returns the factory settings, i.e., the inherent values supported by the  
544 implementation as shipped from the manufacturer or established at install time. This operation  
545 attribute allows an operator to determine which values are supported in an implementation after  
546 having modified a settable attribute. Attributes that are not settable are not affected by this  
547 operation attribute, so that the Printer returns the same values for non-settable attribute when either  
548 the 'true' or 'false' value has been supplied. If this operation attribute is supported, both 'true' and  
549 'false' values MUST be supported.

### 550 3.4 New operation attribute for Pause-Printer: "when" (type2 keyword)

551 Type of registration: attribute

552 Proposed keyword name of this attribute: "when"

553 Types of attribute (Operation, Job Template, Job Description, Printer Description): Operation

554 Operations to be used with if the attribute is an operation attribute: Pause-Printer, Shutdown-Printer, and  
555 Pause-Current-Job

556 Object (Job, Printer, etc. if bound to an object): N/A

557 Attribute syntax(es) (include 1setOf and range as in Section 4.2): type2 keyword

558

559 Specification of this attribute (follow the style of IPP Model Section 4.2):

560 "when" (type2 keyword)

561 The client OPTIONALLY supplies this attribute. The Printer object OPTIONALLY supports this  
562 attribute, if it supports this operation. The value of this attribute indicates when to pause the printer.  
563 If the client omits this attribute, the Printer assumes the '~~after-current-job~~now' value. The '~~after-~~

564 [current-job-now](#) value is REQUIRED to be supported if the "when" attribute is supported; the  
 565 remaining values are OPTIONAL.

566 Note: There is no way to query to see which values of the "when" attribute are supported for this or  
 567 any other operation. Since this operation is intended for Operators, rather than End-Users, it did not  
 568 seem necessary to provide the means to query the supported values.

569  
 570 Standard keyword values are:

571 'now' - pause the Printer immediately, while the current job is processing. See [ipp-mod]  
 572 section 3.2.7) for the effect on the Printer's "printer-state" and "printer-state-reasons"  
 573 attributes. Jobs in the 'held' and 'pending' state remain in those states.

574 'after-current-copy' - pause the Printer after the current job finishes printing its current copy.  
 575 Jobs in the 'held' and 'pending' state remain in those states.

576 'after-current-job' - pause the Printer after the current job finishes printing (all its copies).  
 577 Jobs in the 'held' and 'pending' state remain in those states.

578 'after-all' - pause the Printer after all 'pending' jobs finish printing. Jobs in the 'held' state  
 579 remain in the 'held' state.

580 Note: The "when" operation attribute is also defined for use with the Shutdown-Printer (see section 8.1.5)  
 581 and the Pause-Current-Job (see section 8.2.4) operations, but with a subset of these values.

582 3.5 Summary of the operation attributes for the Printer operations

583 The following table shows the operation attributes for the Printer operations that a client MAY supply in a  
 584 request. Operation parameters and attributes that a client MUST supply are not shown. Also "requesting-  
 585 user-name" is not shown, though it is RECOMMENDED that a client supply it in every request.

586 Legend:

587 R - REQUIRED for a Printer to support

588 O - OPTIONAL for a Printer to support; the Printer ignores the attribute if not supported

Operation Attribute	Pause-Printer	Resume-Printer	Purge-Jobs	Get-Printer-Attributes	Set-Printer-Attributes	Enable-Print	Disable-Printer		Restart-Printer		Shut down-Printer
document-format				R	R						
factory-settings				O							
printer-message-from-operator	O	O	O			O	O		O		O
job-type						O	O				
when	O										O
reset-function											
synchronize											O
shutdown-function											R

589 3.6 Summary of the operation attributes for the Job operations

590 The following table shows the operation attributes for the Job operations that a client MAY supply in a  
 591 request. Operation attributes that specify the Printer or Job object as the target are shown in the first two

592 rows, respectively. Other operation attributes and parameters that a client MUST supply are not shown.  
 593 Also "requesting-user-name" is not shown, though it is RECOMMENDED that a client supply it in every  
 594 request.

595 Legend:

596 R - REQUIRED for a Printer to support

597 O - OPTIONAL for a Printer to support; the Printer ignores the attribute if not supported

Operation Attribute	Cancel- -Job	Cancel- Current- -Job	Hold- -Job	Rel- ease- -Job		Pause- Curren- t- Job	Res- ume- - Job	Get-Job- Attribute s	Set-Job- Attribute s	Restart- Job	Reproces- s- Job	Promo- te- Job
printer-uri		R				R						
printer-uri/job-id or job-uri	R		R	R			R	R	R	R	R	R
job-id		R				R						
requested-attributes								R				
back-space												
forward-space												
synchronize						O						
when						O						
job-message-from- operator	O	O	O	O		O	O			O	O	O
message [to-operator]	O		O	O		O	O			O	O	O
job-hold-until			O*	O*							O**	

598 \* The Printer MUST support the "job-hold-until" operation attribute if it supports the "job-hold-until" Job  
 599 Template attribute.

600 \*\* The Printer MUST support the "job-hold-until" operation attribute if it supports the Set-Job-Attributes  
 601 operation, so that the client can hold the job with the Reprocess-Job operation and the modify the job before  
 602 releasing it to be processed.

603 4 New Printer Description Attributes

604 The following new Printer Description attributes are needed to support the new operations defined in this  
 605 document.

606 4.1 printer-settable-attributes (1setOf type2 keyword)

607 Type of registration: attribute

608 Proposed keyword name of this attribute: printer-settable-attributes

609 Types of attribute (Operation, Job Template, Job Description, Printer Description): Printer Description

610 Operations to be used with if the attribute is an operation attribute: N/A

611 Object (Job, Printer, etc. if bound to an object): Printer

612 Attribute syntax(es) (include 1setOf and range as in Section 4.2): 1setOf type2 keyword

613 If attribute syntax is 'keyword' or 'enum', is it type2 or type3: type2

614 If this is a Printer attribute, MAY the value returned depend on "document-format" (See Section 6.2): Yes

615 If this is a Job Template attribute, how does its specification depend on the value of the "multiple-  
616 document-handling" attribute: N/A

617 Specification of this attribute (follow the style of IPP Model Section 4.2):

618 4.4.? printer-settable-attributes (1setOf type2 keyword)

619 This READ-ONLY Printer attribute identifies the Printer object attributes that are settable in this  
620 implementation, i.e., that are settable using the Set-Printer-Attributes operations. This attribute MUST be  
621 supported if the Set-Printer-Attributes operations is supported. The Printer MUST reject attempts to set any  
622 Printer attributes that are not in this list, returning the 'client-error-attributes-not-settable' status code (see  
623 section 6.1). The value of this attribute MAY depend on the value of the "document-format" operation  
624 attribute supplied in the Get-Printer-Attributes operation (see [ipp-mod] section 3.2.5.1).

625 4.2 job-settable-attributes (1setOf type2 keyword)

626 Type of registration: attribute

627 Proposed keyword name of this attribute: job-settable-attributes

628 Types of attribute (Operation, Job Template, Job Description, Printer Description): Printer Description

629 Operations to be used with if the attribute is an operation attribute: N/A

630 Object (Job, Printer, etc. if bound to an object): Printer

631 Attribute syntax(es) (include 1setOf and range as in Section 4.2): 1setOf type2 keyword

632 If attribute syntax is 'keyword' or 'enum', is it type2 or type3: type2

633 If this is a Printer attribute, MAY the value returned depend on "document-format" (See Section 6.2): Yes

634 If this is a Job Template attribute, how does its specification depend on the value of the "multiple-  
635 document-handling" attribute: N/A

636 Specification of this attribute (follow the style of IPP Model Section 4.2):

637 4.4.? job-settable-attributes (1setOf type2 keyword)

638 This READ-ONLY Printer attribute identifies the Job object attributes that are settable in this  
639 implementation, i.e., that are settable using the Set-Job-Attributes operations. This attribute MUST be  
640 supported if the Set-Job-Attributes operations is supported. The Printer MUST reject attempts to set any  
641 Job attributes that are not in this list, returning the 'client-error-attributes-not-settable' status code (see  
642 section 6.1).

643 4.3 printer-controls-other-protocols (boolean)

644 Type of registration: attribute

645 Proposed keyword name of this attribute: printer-controls-other-protocols

646 Types of attribute (Operation, Job Template, Job Description, Printer Description): Printer Description

647 Operations to be used with if the attribute is an operation attribute: N/A

648 Object (Job, Printer, etc. if bound to an object): Printer

649 Attribute syntax(es) (include 1setOf and range as in Section 4.2): boolean

650 If attribute syntax is 'keyword' or 'enum', is it type2 or type3: N/A

651 If this is a Printer attribute, MAY the value returned depend on "document-format" (See Section 6.2): No

652 If this is a Job Template attribute, how does its specification depend on the value of the "multiple-  
653 document-handling" attribute: N/A

654 Specification of this attribute (follow the style of IPP Model Section 4.2):

655 4.4.? printer-controls-other-protocols (boolean)

656 This Printer attribute indicates whether all IPP printer and job operations, such as Disable-Printer, Pause-  
657 Printer, Cancel-Job, etc., affect non-IPP protocols that may be supported. It is RECOMMENDED that IPP  
658 control other non-IPP protocols. However, this attribute permits an implementation to indicate explicitly  
659 whether it does affect other protocols or not.

660 A 'false' value indicates that IPP operations only affect jobs submitted by the IPP Protocol. For example, a  
661 'true' value indicates that a Disable-Printer operation prevents all protocols from submitting jobs, not just  
662 the IPP protocol. A 'true' value indicates that the Pause-Printer operation would pause the current job, no  
663 matter what job submission protocol had submitted it. A 'true' value indicates that the Cancel-Job operation  
664 will cancel the specified job even if it was submitted using a different job submission protocol, such as  
665 LPR.

666 As with any Printer Description attribute that this specification does not list as READ-ONLY, an  
667 implementation MAY allow a client to change the value of this attribute using Set-Printer-Attributes,  
668 thereby changing the way that the IPP operations affect other non-IPP protocols. An implementation MAY  
669 also support other means to change the value of this attribute, such as via the console or at installation time.

670 4.4 printer-message-time (integer(MIN:MAX))

671 Type of registration: attribute

672 Proposed keyword name of this attribute: printer-message-time

673 Types of attribute (Operation, Job Template, Job Description, Printer Description): Printer Description

674 Operations to be used with if the attribute is an operation attribute: N/A

675 Object (Job, Printer, etc. if bound to an object): Printer

676 Attribute syntax(es) (include 1setOf and range as in Section 4.2): integer(MIN:MAX)

677 If attribute syntax is 'keyword' or 'enum', is it type2 or type3: N/A

678 If this is a Printer attribute, MAY the value returned depend on "document-format" (See Section 6.2): No

679 If this is a Job Template attribute, how does its specification depend on the value of the "multiple-  
680 document-handling" attribute: N/A

681 Specification of this attribute (follow the style of IPP Model Section 4.2):

682 4.4.? printer-message-time (integer(MIN:MAX))

683 This READ-ONLY Printer Description attribute contains the time that the Printer's "printer-message-from-  
684 operator" was changed by the operator using any operation where the client supplied the "printer-message-  
685 from-operator" operation attribute (see section 3.1) or was explicitly set using the Set-Printer-Attributes  
686 operation (see section 8.1.1). This attribute allows the users to know when the "printer-message-from-  
687 operator" attribute was last set.

688 The Printer sets the value of this attribute by copying the value of the Printer's "printer-up-time" attribute  
689 (see [ipp-mod] section 4.3.14). If the Printer resets its "printer-up-time" attribute to 1 on power-up, then it  
690 MUST change the value of the "printer-message-time" to 0 or a negative number as specified in [ipp-mod]  
691 section 4.3.14.



692 Note: This attribute helps users better understand the context for the "printer-message-from-operator"  
693 message.

#### 694 4.5 printer-message-date-time (dateTime)

695 Type of registration: attribute

696 Proposed keyword name of this attribute: printer-message-date-time

697 Types of attribute (Operation, Job Template, Job Description, Printer Description): Printer Description

698 Operations to be used with if the attribute is an operation attribute: N/A

699 Object (Job, Printer, etc. if bound to an object): Printer

700 Attribute syntax(es) (include 1setOf and range as in Section 4.2): dateTime

701 If attribute syntax is 'keyword' or 'enum', is it type2 or type3: N/A

702 If this is a Printer attribute, MAY the value returned depend on "document-format" (See Section 6.2): No

703 If this is a Job Template attribute, how does its specification depend on the value of the "multiple-  
704 document-handling" attribute: N/A

705 Specification of this attribute (follow the style of IPP Model Section 4.2):

#### 706 4.4.? printer-message-date-time (dateTime)

707 This READ-ONLY Printer Description attribute contains the date and time that the Printer's "printer-  
708 message-from-operator" was changed by the operator using any operation where the client supplied the  
709 "printer-message-from-operator" operation attribute (see section 3.1) or was explicitly set using the Set-  
710 Printer-Attributes operation (see section 8.1.1). This attribute allows the users to know when the "printer-  
711 message-from-operator" attribute was last set. This attribute MUST be supported if the Printer supports  
712 both the "printer-message-from-operator" and the "printer-current-date-time" attributes.

713 Note: This attribute helps users better understand the context for the "printer-message-from-operator"  
714 message.

#### 715 4.6 printer-message-operation (type2 keyword)

716 Type of registration: attribute

717 Proposed keyword name of this attribute: printer-message-operation

718 Types of attribute (Operation, Job Template, Job Description, Printer Description): Printer Description

719 Operations to be used with if the attribute is an operation attribute: N/A

720 Object (Job, Printer, etc. if bound to an object): Printer

721 Attribute syntax(es) (include 1setOf and range as in Section 4.2): type2 enum

722 If attribute syntax is 'keyword' or 'enum', is it type2 or type3: type2

723 If this is a Printer attribute, MAY the value returned depend on "document-format" (See Section 6.2): No

724 If this is a Job Template attribute, how does its specification depend on the value of the "multiple-  
725 document-handling" attribute: N/A

726 Specification of this attribute (follow the style of IPP Model Section 4.2):

#### 727 4.4.? printer-message-operation (type2 enum)



728 This READ-ONLY Printer Description attribute contains the operation that was used to change the  
729 Printer's "printer-message-from-operator" by the operator using any operation where the client supplied the  
730 "printer-message-from-operator" operation attribute (see section 3.1) or explicitly set using the Set-Printer-  
731 Attributes operation (see section 8.1.1). This attribute allows the users to know which operation was used  
732 to change the "printer-message-from-operator" attribute when it was last set.

733 Note: This attribute helps users better understand the context for the "printer-message-from-operator".

#### 734 4.7 subordinate-printers-supported (1setOf uri)

735 This Printer attribute is REQUIRED if an implementation supports subordinate Printers (see section 2.2)  
736 and contains the URIs of the immediate subordinate Printer object(s) associated with this Printer object. ~~In  
737 order to support subordinate Printer objects, there MUST be at least two subordinate Printer objects.~~

738 The precise format of the subordinate Printer URIs is implementation dependent (see section 2.2).

739 If the Printer object does not have an associated Device object (see section 1.1), the value of the subordinate  
740 Printer object's "printer-name" MAY be used to populate the Job object's "output-device-assigned"  
741 attribute (see [ipp-mod] section 4.3.13). The "output-device-assigned" Job attribute identifies the output  
742 device to which the Printer object has assigned a job, for example, when a single Printer object is  
743 supporting fan-out.

#### 744 5 Additional values for "printer-state-reasons" and "job-state-reasons" attributes

745 The following values are added to the "printer-state-reasons" and "job-state-reasons" for use with the  
746 operations defined in this document.

##### 747 5.1 Value for "printer-state-reasons": 'standby'

748 Type of registration: type2 keyword attribute value

749 Name of attribute to which this keyword specification is to be added: printer-state-reasons

750 Proposed keyword name of this keyword value: standby

751 Specification of this keyword value (follow the style of IPP Model Section 4.1.2.3):

752 'standby': The Printer has been shutdown in standby mode. Only Restart-Printer and Get-Printer-  
753 Attributes operations are accepted in this state; all other operations are rejected with the 'server-  
754 error-printer-is-in-standby-mode'.

##### 755 5.2 Value for "job-state-reasons": 'job-paused'

756 Type of registration: type2 keyword attribute value

757 Name of attribute to which this keyword specification is to be added: job-state-reasons

758 Proposed keyword name of this keyword value: job-paused

759 Specification of this keyword value (follow the style of IPP Model Section 4.1.2.3):

760 'job-paused': The job has been paused while processing using the Pause-Current-Job operations and  
761 other jobs can be processed on the Printer. The Job can be resumed using the Resume-Job operation  
762 which removes this value.  
763

## 764 6 New status codes

765 This section defines new status codes used by the operations defined in this document.

### 766 6.1 New status code: 'client-error-attributes-not-settable'

767 Type of registration: status code

768 Keyword symbolic name of this status code value: 'client-error-attributes-not-settable'

769 Numeric value (to be assigned by the IPP Designated Expert in consultation with IANA):

770 Operations that this status code may be used with: Set-Printer-Attributes, Set-Job-Attributes

771 Specification of this status code (follow the style of IPP Model Section 13 APPENDIX B: Status Codes  
772 and Suggested Status Code Messages):

#### 773 13.1.4.20 client-error-attributes-not-settable (0x0413)

774 In a Set-Printer-Attributes or Set-Job-Attributes request, if the Printer object does not support one or more  
775 attributes as settable, the Printer object MUST return this status code. The Printer object MUST also return  
776 in the Unsupported Attributes Group all the attributes and/or values supplied by the client that are not  
777 settable. See [ipp-mod] section 3.1.7. For example, if the request indicates 'job-state', all implementations  
778 MUST reject the request. As another example, if the request indicates an attribute that is supported, but not  
779 settable by this implementation, such as, say, "printer-name", the implementation rejects the request.

### 780 6.2 New status code: 'server-error-printer-is-in-standby-mode'

781 Type of registration: status code

782 Keyword symbolic name of this status code value: 'server-error-printer-is-in-standby-mode'

783 Numeric value (to be assigned by the IPP Designated Expert in consultation with IANA):

784 Operations that this status code may be used with: Shutdown-Printer

785 Specification of this status code (follow the style of IPP Model Section 13 APPENDIX B: Status Codes  
786 and Suggested Status Code Messages):

#### 787 13.1.5.8 server-error-printer-is-in-standby-mode

788 The Printer has been shutdown and is only accepting the Restart-Printer (see section 8.1.4) and Get-Printer-  
789 Attributes operations. An operator can perform the Restart-Printer operation to allow the Printer to accept  
790 other operations.

## 791 7 New out-of-band values

792 This section defines additional out-of-band values that can be used with any attribute in principle. See the  
793 beginning of [ipp-mod] section 4.1.

## 794 7.1 'not-settable' out of band value

795 The 'not-settable' out of band value is used by the IPP Printer in a Set-Job-Attributes or Set-Printer-  
796 Attributes response to indicate an attribute that was supplied, but is not settable in that implementation or as  
797 defined by the policy for that system, because it is not in the "job-settable-attributes" on the one hand, or the  
798 "interpreter-settable-attributes" or "printer-settable-attributes", on the other hand.

## 799 8 Summary of Set 2 operations and Operation-Id Assignments

800 The Set 2 operations are summarized in the following table:

Operation Name	Operation-Id	Brief description
Set-Printer-Attributes	0x??	Sets attribute values of the target Printer object
Enable-Printer	0x??	Allows the target Printer to accept create job operations
Disable-Printer	0x??	Prevents the target Printer from accepting create job operations
Restart-Printer	0x??	Restarts the target Printer from a standby shutdown mode
Shutdown-Printer	0x??	Shuts down the target Printer in several ways
Set-Job-Attributes	0x??	Sets attribute values of the target Job object
Reprocess-Job	0x??	Creates a copy of a completed target job with a new Job ID and processes it
Cancel-Current-Job	0x??	Cancels the current job on the target Printer or the specified job if it is the current job
Pause-Current-Job	0x??	Pauses the current processing job on the target Printer or the specified job if it is the current job, allowing other jobs to be processed instead
Resume-Job	0x??	Resume the paused target job
Promote-Job	0x??	Promote the pending target job to be next after the current job(s) complete

801 All of the operations in this registration proposal specification are OPTIONAL for an IPP object to support.  
802 Unless the specification of an OPTIONAL operation requires support of another OPTIONAL operation,  
803 conforming implementations may support any combination of these operations.

804

## 805 8.1 Printer Operations

806 All Printer operations are directed at Printer objects. A client MUST always supply the "printer-uri"  
807 operation attribute in order to identify the correct target of the operation. These descriptions assume all of  
808 the common semantics of IPP/1.1 Model and Semantics document [ipp-mod] section 3.1.

## 809 8.1.1 Set-Printer-Attributes Operation

810 Type of registration: operation

811 Proposed name of this operation: Set-Printer-Attributes

812 Object Target: Printer

813 Specification of this operation:

814 This OPTIONAL operation allows a client to set the values of the attributes of a Printer object. In the  
815 request, the client supplies the set of Printer attribute names and values that are to be set. In the response,  
816 the Printer object returns success or rejects the request with indications of which attribute or attributes  
817 could not be set.

818 How the Printer object validates the client-supplied attributes in the Set-Printer-Attributes request is  
819 implementation-dependent, since there are no corresponding Printer attributes that specify the allowed  
820 values that may be set on the Printer object.

821 The Printer MUST accept this operation in any state, i.e., for any of the values of the Printer object's  
822 "printer-state" attribute.

## 823 8.1.1.1 Settable and READ-ONLY Printer Description attributes

824 If the Printer supports the "printer-message-from-operator" Printer Description attribute (see [ipp-mod]  
825 section 4.4.25) and the client explicitly supplies a new value for the "printer-message-from-operator" in the  
826 request, then the Printer MUST set the "printer-message-from-operator" Printer attribute to this new value  
827 and MUST also set the "printer-message-time", "printer-message-date-time", and "printer-message-  
828 operation" attributes, if supported (see sections 4.4, 4.5, and 4.6).

829 If the Printer supports the Set-Printer-Attributes operation, then it SHOULD support setting of:

830 all Job Template Default ("xxx-default") attributes

831 all Job Template Supported ("xxx-supported") attributes

832 all Job Template Ready ("xxx-ready") attributes

833 that the implementation supports (see [ipp-mod] section 4.2 and extensions).

834 The following Printer Description attributes (see [ipp-mod] section 4.4) MUST NOT be settable, i.e., they  
835 are READ-ONLY:

836 printer-state  
837 printer-state-reasons  
838 printer-state-message  
839 printer-is-accepting-jobs - see Enable-Printer/Disable-Printer  
840 queued-job-count  
841 printer-message-time - see Set-Printer-Attributes when setting "printer-message-from-operator"  
842 printer-message-date-time - see Set-Printer-Attributes when setting "printer-message-from-operator"  
843 printer-message-operation - see Set-Printer-Attributes when setting "printer-message-from-operator"  
844 printer-up-time

845 The remaining Printer Description attributes MAY be settable using the Set-Printer-Attributes operation,  
846 depending on implementation. If "xxx-supported" Printer Description attribute are settable, then they  
847 MUST affect the behavior of the implementation. If they are READ-ONLY then they reflect the  
848 implementation and cannot be changed using the Set-Printer-Attributes operation. Consider the following  
849 examples:

850 For example, if the "operations-supported" Printer Description attribute (see [ipp-mod] section  
851 4.4.15) is settable, then changing its value MUST affect the operations that the implementation  
852 accepts or rejects. Such an implementation will need to be able to reject values for operations that it  
853 contains no code support for.

854 As another example, if the "ipp-versions-supported" Printer Description attribute (see [ipp-mod]  
855 section 4.4.14) is settable, then changing its value MUST affect the protocol versions that are  
856 accepted or rejected. Such an implementation will need to be able to reject values for operations  
857 that it contains no code support for.

858 See the "factory-settings" operation attribute (see section 3.3) for a way to query the implementation  
859 supported values using the Get-Printer-Attributes operation. See the "reset-function" operation attribute of  
860 the Reset-Device operation (see [ipp-set3]) for a way to restore the values of the Device object to the  
861 factory settings.

862 **ISSUE 07 - Ok not to have a way to reset the values of the Printer object to the factory settings, but only**  
863 **have a way to reset the factory default settings for the Device object?**

864 *Access Rights:* Authentication and access control (see [ipp-mod] sections 1, 8.3, and 8.5) apply to this  
865 operation.

866 Most Printer attributes will require administrator privileges to set, such as "xxx-supported", while some will  
867 require operator privileges only, such as "media-ready" and "printer-message-from-operator". Which  
868 attributes require which privileges depends on implementation and MAY depend on site policy.

869

## 870 8.1.1.2 Set-Printer-Attributes Request

871 The following sets of attributes are part of the Set-Printer-Attributes Request:

## 872 Group 1: Operation Attributes

873 Natural Language and Character Set:

874 The "attributes-charset" and "attributes-natural-language" attributes as described in [ipp-mod]  
875 section 3.1.4.1.

876

877 Target:

878 The "printer-uri" (uri) operation attribute which is the target for this operation as described in [ipp-  
879 mod] section 3.1.5.

880

881 Requesting User Name:

882 The "requesting-user-name" (name(MAX)) attribute SHOULD be supplied by the client as  
883 described in [ipp-mod] section 8.3.

884

885

886 "document-format" (mimeMediaType):

887 The client SHOULD supply this attribute. The Printer object MUST support this attribute. This  
888 attribute is useful for a client to select the Interpreter object to which the attribute modification  
889 should be applied. Each Printer object is modeled to contain one or more Interpreter objects. Those  
890 Printer attributes whose values vary from Interpreter to Interpreter, are modeled as Interpreter  
891 objects, while those that do not are Printer object attributes. Thus the target of a Get-Printer-  
892 Attributes or Set-Printer-Attributes operation is either the Printer object or the Interpreter object  
893 identified by the "document-format" operation attribute supplied by the client. Except for Get-  
894 Printer-Attributes and Set-Printer-Attributes, there are no other operations with the Interpreter object  
895 as a target. See [ipp-mod] section 3.2.5.1 "Get-Printer-Attributes Request".

896

897 If a client wants to set an attribute of all of the Interpreter objects to the same value, it can query the  
898 Printer's "document-format-supported" Printer Description attribute and perform separate Set-  
899 Printer-Attributes for each document format supported.

900

901 If the Printer object does not distinguish between different sets of supported values for each  
902 different document format when validating jobs in the create and Validate-Job operations, it MUST  
903 NOT distinguish between different document formats in the Set-Printer-Attributes operation. If the  
904 Printer object does distinguish between different sets of supported values for each different  
905 document format specified by the client, this specialization applies only to the same Printer  
906 attributes as the Get-Printer-Attributes operation (see [ipp-mod] section 3.2.5.1).

907

908 If the client omits this "document-format" operation attribute, the Printer object MUST respond as if  
909 the attribute had been supplied with the value of the Printer object's "document-format-default"

910 attribute. It is recommended that the client always supply a value for "document-format", since the  
911 Printer object's "document-format-default" may be 'application/octet-stream', in which case the set  
912 attributes and values are for the union of the document formats that the Printer can automatically  
913 sense. For more details, see the description of the 'mimeType' attribute syntax in [ipp-mod]  
914 section 4.1.9.

915

916 If the client supplies a value for the "document-format" Operation attribute that is not supported by  
917 the Printer, i.e., is not among the values of the Printer object's "document-format-supported"  
918 attribute, the Printer object MUST reject the operation and return the 'client-error-document-format-  
919 not-supported' status code.

920

## 921 Group 2: Printer Attributes

922 The client MUST supply a set of Printer attributes as defined in [ipp-mod] section 4.2 Job Template  
923 Attributes ("xxx-default", "xxx-supported", and "xxx-ready" attributes) and section 4.4 Printer  
924 Description Attributes. Each Printer attribute supplied in Group 2 replaces the value(s) of the  
925 corresponding Printer attribute on the target Printer object. If a Printer object attribute had not been  
926 configured yet and so had the 'no-value' out-of-band value (see [ipp-mod] 4.1), the supplied value(s)  
927 replace the 'no-value' value. For attributes that can have multiple values (1setOf), all values  
928 supplied by the client replace all values of the corresponding Printer object attribute.

929

### 930 8.1.1.3 Set-Printer-Attributes Response

931 The Printer object returns the following sets of attributes as part of the Get-Printer-Attributes Response:

#### 932 Group 1: Operation Attributes

##### 933 Status Message:

934 In addition to the REQUIRED status code returned in every response, the response OPTIONALLY  
935 includes a "status-message" (text(255)) and/or a "detailed-status-message" (text(MAX)) operation  
936 attribute as described in [ipp-mod] sections 13 and 3.1.6.

937

##### 938 Natural Language and Character Set:

939 The "attributes-charset" and "attributes-natural-language" attributes as described in [ipp-mod]  
940 section 3.1.4.2.

941

#### 942 Group 2: Unsupported Attributes

943 See [ipp-mod] section 3.1.7 for details on returning Unsupported Attributes.

944

945 In the case of attributes that are supported, but are not settable by the implementation, i.e., are not  
946 among the values of the Printer's "settable-attributes" Printer Description attribute (see section 4.1),  
947 the Printer object returns the client-supplied attribute(s) with a substituted value of 'not-supported'  
948 (same out-of-band value as for attributes that are not supported). This value's syntax type is "out-of-  
949 band" and its encoding is defined by special rules for "out-of-band" values in the "Encoding and



950           Transport" document [IPP-PRO]. Its value indicates that the attribute is either not settable or is not  
951           supported at all.

952

## 953 8.1.2 Disable-Printer Operation

954 Type of registration: operation

955 Proposed name of this operation: Disable-Printer

956 Object Target: Printer

957 Specification of this operation:

958 This OPTIONAL operation allows a client to stop the Printer object from accepting jobs, i.e., cause the  
959 Printer to reject subsequent create job operations (Print-Job, Print-URI, and Create-Job operation) and  
960 return the 'server-error-not-accepting-jobs' status code. The Printer still accepts all other operations. All  
961 previously submitted Jobs and currently processing Jobs continue unaffected. The Printer sets the value of  
962 its "printer-is-accepting-jobs" READ-ONLY Printer Description attribute to 'false' (see [ipp-mod] section  
963 4.4.20), no matter what the previous value was. This operation has no immediate effect on the Printer's  
964 "printer-state" and "printer-state-reasons" attributes.

965 Note: Use the Enable-Printer operation (section 8.1.3) to enable a Printer to accept Jobs again.

966 If the Disable-Printer operation is supported, then the Enable-Printer operation MUST be supported, and  
967 vice-versa.

968 Note: Use the Enable-Printer and Disable-Printer operations to allow or prevent input to a Printer. Use the  
969 Pause-Printer and Resume-Printer operations to prevent or allow output from the Printer.

970 Whether or not the Disable-Printer operation stops jobs that are submitted using job submission protocols  
971 other than IPP, depends on implementation, i.e., on whether the IPP protocol is being used as a universal  
972 management protocol or just to manage IPP jobs, respectively. See "printer-controls-other-protocols"  
973 (section 4.3).

974 *Access Rights:* Authentication and access control (see [ipp-mod] sections 1, 8.3, and 8.5) apply to this  
975 operation.

976 The Disable-Printer Request and Disable-Printer Response have the same attribute groups and attributes as  
977 the Resume-Printer operation (see [ipp-mod] sections 3.2.7.1 and 3.2.7.2), including the new "printer-  
978 message-from-operator" operation attribute (see section 3.1), and with the addition of the following Group  
979 1 operation attribute in the request:

980 "job-type" (type2 keyword):

981 The client OPTIONALLY supplies this attribute. The Printer object OPTIONALLY supports this  
982 attribute. The value of this attribute indicates the type of job to be disabled. If the client omits this  
983 attribute, the Printer assumes the 'network-jobs' value.

984

985 Standard keyword values are:

986 'network-jobs' - disable jobs submitted using the create job operations.

987 'walk-up-jobs' - disable jobs submitted locally, such as walkup copy jobs

988 'all-jobs' - disable all type of jobs

989

## 990 8.1.3 Enable-Printer Operation

991 Type of registration: operation

992 Proposed name of this operation: Enable-Printer

993 Object Target: Printer

994 Specification of this operation:

995 This OPTIONAL operation allows a client to start the Printer object accepting jobs, i.e., cause the Printer to  
996 accept subsequent create job operations (Print-Job, Print-URI, and Create-Job operation). The Printer still  
997 accepts all other operations. All previously submitted Jobs and currently processing Jobs continue  
998 unaffected. The Printer sets the value of its "printer-is-accepting-jobs" READ-ONLY Printer Description  
999 attribute to 'true' (see [ipp-mod] section 4.4.20), no matter what the previous value was. This operation has  
1000 no immediate effect on the Printer's "printer-state" and "printer-state-reasons" attributes.

1001 Note: Use the Disable-Printer operation (section 8.1.2) to stop a Printer from accepting Jobs.

1002 If the Enable-Printer operation is supported, then the Disable-Printer operation MUST be supported, and  
1003 vice-versa.

1004 Note: Use the Enable-Printer and Disable-Printer operations to allow or prevent input to a Printer. Use the  
1005 Pause-Printer and Resume-Printer operations to prevent or allow output from the Printer.

1006 Whether or not the Enable-Printer operation allows acceptance of jobs that are submitted using job  
1007 submission protocols other than IPP, depends on implementation, i.e., on whether the IPP protocol is being  
1008 used as a universal management protocol or just to manage IPP jobs, respectively. See "printer-controls-  
1009 other-protocols" (section 4.3).

1010 *Access Rights:* Authentication and access control (see [ipp-mod] sections 1, 8.3, and 8.5) apply to this  
1011 operation.

1012 The Enable-Printer Request and Enable-Printer Response have the same attribute groups and attributes as  
1013 the Resume-Printer operation (see [ipp-mod] sections 3.2.8.1 and 3.2.8.2), including the new "printer-  
1014 message-from-operator" operation attribute (see section 3.1), and with the addition of the following Group  
1015 1 operation attribute in the request:

1016 "job-type" (type2 keyword):

1017 The client OPTIONALLY supplies this attribute. The Printer object OPTIONALLY supports this  
1018 attribute. The value of this attribute indicates the type of job to be enabled. If the client omits this  
1019 attribute, the Printer assumes the 'network-jobs' value.

1020

1021 Standard keyword values are:

1022 'network-jobs' - enable jobs submitted using the create job operations.

1023 'walk-up-jobs' - enable jobs submitted locally, such as walkup copy jobs

1024 'all-jobs' - enable all types of jobs

## 1025 8.1.4 Restart-Printer operation

1026 Type of registration: operation

1027 Proposed name of this operation: Restart-Printer

1028 Object Target: Printer

1029 Specification of this operation:

1030 This OPTIONAL operation allows a client to restart a Printer that has previously been shutdown in standby  
1031 mode (see section 8.1.5). Standby mode is indicated by the Printer's "printer-state" being 'stopped' and its  
1032 "printer-state-reasons" including the 'standby' and 'paused' values. If the Printer is not in standby mode, the  
1033 Printer MUST reject this operation and return the 'client-error-not-possible' status code.

1034 **ISSUE 08: What state does the Printer comes back up on Restart-Printer and how can the client control?**  
1035 **Possible alternatives:**

1036 a. Restart-Printer always brings the Printer up Disabled ("printer-is-accepting-jobs" = 'false') and  
1037 Paused ("printer-state" = 'stopped', and "printer-state-reasons" = 'paused') which is the state that  
1038 Shutdown-Printer leaves the Printer in. Then the operator issues Enable-Printer and Resume-Printer  
1039 when want to restore normal operation. The client can automatically issues these addition 2  
1040 operations depending on GUI options. Advantages: This is the simplest to implement, allows new  
1041 states to be added without changing the Restart-Printer operation, and can have the same GUI  
1042 interface as b:

1043 b. Add a REQUIRED operation attribute to Restart-Printer, something like "printer-condition" with  
1044 values: 'disabled-and-paused', 'enabled-and-paused', and 'enabled-and-idle'.

1045 **DENVER MEETING>** There was significant confusion as to the meaning of shutdown. If a shutdown  
1046 operation halts communications to the printer a restart is not possible. It was agreed to include restart  
1047 attributes 'restart-to-standby' (requires a two step process), 'restart-fully', and 'restart-sync'.

1048 **ACTION ITEM (Harry Lewis):** make a complete proposal and submit for approval.

1049 If the Restart-Printer operation is supported, then the Shutdown-Printer operation MUST be supported,  
1050 since the Restart-Printer operation is meaningful only after a Shutdown-Printer operation has been  
1051 performed. However, if the Shutdown-Printer operation is supported, the Restart-Printer NEED NOT be  
1052 supported.

1053 **Issue 09: Why? This is backward, if you ask me (HRL).**

1054 **Denver meeting>** Consider "shutdown-attributes" similar to Windows "shutdown". Like:

- 1055 – Completely power off (walk to printer to bring it back up)
- 1056 – Power off but listen for "restart" - shutdown to standby

1057 **Denver meeting>** Also consider restart attributes.

- 1058 – Restart to Standby (disabled and paused) (two step bring up)
- 1059 – Restart (fully).
- 1060 – Restart sych

1061 *Access Rights*: Authentication and access control (see [ipp-mod] sections 1, 8.3, and 8.5) apply to this  
1062 operation.

1063 The Restart-Printer Request and Restart-Printer Response have the same attribute groups and attributes as  
1064 the Resume-Printer operation (see [ipp-mod] sections 3.2.8.1 and 3.2.8.2), including the new "printer-  
1065 message-from-operator" operation attribute (see section 3.1) and the following Group 1 operation attribute:

1066

## 1067 8.1.5 Shutdown-Printer Operation

1068 Type of registration: operation

1069 Proposed name of this operation: Shutdown-Printer

1070 Object Target: Printer

1071 Specification of this operation:

1072 This OPTIONAL operation allows a client to shutdown a Printer, i.e., stop processing jobs and power off in  
1073 some implementation-dependent manner. The purpose of Shutdown-Printer is to shutdown the Printer for  
1074 an extended period, not to reset the device(s) or modify a Printer attribute. See Reset-Device [ipp-set3] for  
1075 the way to reset the device(s). See the Disable-Printer operation (section 8.1.2) for a way for the client to  
1076 stop the Printer from accepting Job Creation requests without stopping processing or shutting down.

1077 The Printer is disabled immediately (see the Disable-Printer operation in section 8.1.2). The Printer adds  
1078 the 'shutdown' value (see [ipp-mod] section 4.4.11) to its "printer-state-reasons" Printer Description  
1079 attribute. The "when" operation attribute specifies how much processing occurs before the Printer is paused  
1080 (see [ipp-mod] section 3.2.7) and the shutdown is complete. All other requests continue to be accepted  
1081 until the printer is powered down.

1082 ISSUE 10 - Need to look at life cycle of the Printer versus standby/power-down and the other operations  
1083 that can be accepted. There can be appreciable time between acceptance of this operation and when the  
1084 final state of the printer, either standby or powered down is reached. Is it ok for non-submission operations  
1085 to continue to be accepted during this time? May need 'moving-to-shutdown'. What about 'moving-to-  
1086 standby'?

1087 TH> Add 'moving-to-shutdown' which the Shutdown-Printer sets  
1088 immediately (analogous to 'moving-to-paused'). Then the 'shutdown'  
1089 values means that the shutdown has completed (and is only meaningful to  
1090 a server implementation that hosts the Printer object). Thus the server  
1091 can still respond to a Get-Printer-Attributes operation after the  
1092 Printer is shutdown as stated in IPP/1.1.

1093  
1094 HRL> Is this granularity really achievable enough of a wide enough  
1095 variety of environments to be reliable or, in reality, will this be  
1096 implementation dependent?

1097 Whether or not the Shutdown-Printer operation affects jobs that were submitted to the device using job  
1098 submission protocols other than IPP, depends on implementation, i.e., on whether the IPP protocol is being  
1099 used as a universal management protocol or just to manage IPP jobs, respectively. See "printer-controls-  
1100 other-protocols" (section 4.3).

1101 The Printer object MUST accept this operation in any state and transition the Printer object to the 'idle'  
1102 state.

1103 *Access Rights:* Authentication and access control (see [ipp-mod] sections 1, 8.3, and 8.5) apply to this  
1104 operation.

1105 The Shutdown-Printer Request and Shutdown-Printer Response have the same attribute groups and  
1106 attributes as the Pause-Printer operation (see [ipp-mod] sections 3.2.7.1 and 3.2.7.2), including the new

1107 "printer-message-from-operator" operation attribute (see section 3.1), and with the addition of the following  
1108 Group 1 operation attributes in the request:

1109 "when" (type2 keyword)

1110 The client **OPTIONALLY** supplies this attribute. The Printer object **OPTIONALLY** supports this  
1111 attribute, if it supports this operation. The value of this attribute indicates when to pause the printer.  
1112 If the client omits this attribute, the Printer assumes the 'after-current-job' value. The 'after-current-  
1113 job' value is **REQUIRED** to be supported if the "when" attribute is supported; the remaining values  
1114 are **OPTIONAL**.

1115 Note: There is no way to query to see which values of the "when" attribute are supported for this or  
1116 any other operation. Since this operation is intended for Operators, rather than End-Users, it did not  
1117 seem necessary to provide the means to query the supported values.

1118

1119 Standard keyword values are:

1120 'now' - cancel the currently printing job(s) and shutdown the Printer. Jobs in the 'held' and  
1121 'pending' state remain in those states.

1122 'after-current-job' - shutdown the Printer after the current job finishes printing (all its copies).  
1123 Jobs in the 'held' and 'pending' state remain in those states.

1124 'after-all' - shutdown the Printer after all 'pending' jobs finish printing. Jobs in the 'held' state  
1125 remain in the 'held' state.

1126 **ISSUE 11 - Ok to remove the 'after-current-copy' value from Shutdown-Printer?**

1127

1128 **ISSUE 12 - Ok to have removed the "shutdown-function" operation attribute with values**  
1129 **'stand-by' vs. 'power-off' Shutdown-Printer on the grounds that for the Printer object**  
1130 **they have no meaning. Power-off is for the Shutdown-Device operation.**

1131 "synchronize" (boolean)

1132 The client **OPTIONALLY** supplies this attribute. The Printer object **OPTIONALLY** supports this  
1133 attribute. This attribute indicates whether or not the printer is to synchronize the checkpoint data for  
1134 the current job ("when" = 'now') with the pages that have actually printed. If the value of the "when"  
1135 attribute is not 'now' or the "when" attribute is not supplied, then the "synchronize" attribute has no  
1136 meaning and the Printer **MUST** ignore it. If this attribute is supported, then a value of 'true' implies  
1137 that the Printer will be able to resume the job at the point of synchronization when the Printer is  
1138 restarted. If the implementation does not support resuming a job (either automatically or with the  
1139 Resume-Job operation) after a Shutdown-Printer with "when" = 'now', then it does not implement  
1140 this attribute. In this case, check-pointing implies that the job may be resumed in the future, exactly  
1141 from the point and in the state and resource context from which it left off.

1142

1143

1144 If the Printer supports this attribute but the client does not supply it, the Printer is assumed to  
1145 perform synchronization ('true' behavior). If the Printer does not support this attribute, the Printer is  
1146 assumed to not synchronize ('false' behavior).

1147

1148

1149 **ISSUE 13: Is the current job automatically restarted when the Printer is restarted? Or does some**  
1150 **client have to issue a Restart-Job operation?**



1151

## 1152 8.2 Job Operations

1153 All Job operations are directed at Job objects. A client **MUST** always supply some means of identifying the  
1154 Job object in order to identify the correct target of the operation. That job identification **MAY** either be a  
1155 single Job URI or a combination of a Printer URI with a Job ID. The IPP object implementation **MUST**  
1156 support both forms of identification for every job.

## 1157 8.2.1 Set-Job-Attributes

1158 Type of registration: operation

1159 Proposed name of this operation: Set-Job-Attributes

1160 Object Target: Job

1161 Specification of this operation:

1162 This **OPTIONAL** operation allows a client to set the values of the attributes of a Job object. In the request,  
1163 the client supplies the set of Job attribute names and values that are to be set. In the response, the IPP  
1164 object returns success or rejects the request with indications of which attribute or attributes could not be set.

1165 This operation is almost identical to the Set-Printer-Attributes operation (see section 8.1.1). The only  
1166 differences are that the Set-Job-Attributes operation is directed at a Job object rather than a Printer object,  
1167 there is no "document-format" operation attribute used when setting a Job object, and the validation is the  
1168 same as the create job operations, i.e., depends on the "xxx-supported" Printer Description attributes.

1169 The validation of the Set-Job-Attributes request is performed as if the job had been submitted originally  
1170 with the new values and with "ipp-attribute-fidelity" set to 'true', i.e., all modified attributes **MUST** be  
1171 supported along with the attributes not modified. If such a create job operation would have been accepted,  
1172 then the Set-Job-Attributes **MUST** be accepted. If such a create job operation would have been rejected,  
1173 then the Set-Job-Attributes **MUST** be rejected and the Job **MUST** be unchanged.

1174 The IPP object **MUST** accept or reject the request based on the job's current state and transition the job to  
1175 the indicated new state as follows:

Current "job-state"	New "job-state"	IPP object's response status code and action:
'pending'	'pending'	'successful-ok'
'pending'	'pending-held'	'successful-ok' - needed resources are not ready
'pending-held'	'pending-held'	'successful-ok'
'pending-held'	'pending'	'successful-ok' - needed resources are ready
'processing'	'processing'	'successful-ok' or 'client-error-not-possible' depending on the attributes being set, whether the job has started marking media, and/or implementation
'processing-stopped'	'processing-stopped'	'successful-ok' or 'client-error-not-possible' depending on the attributes being set, whether the job has started marking media, and/or implementation
'completed'	'completed'	'client-error-not-possible'
'canceled'	'canceled'	'client-error-not-possible'
'aborted'	'aborted'	'client-error-not-possible'

1176 8.2.1.1 Settable and READ-ONLY Job Description attributes

1177 If the Printer supports the "job-message-from-operator" Job Description attribute (see [ipp-mod] section  
1178 4.3.16) and the client explicitly supplies a new value for the "job-message-from-operator" in the request,  
1179 then the Printer MUST set the "job-message-from-operator" Job attribute to this new value.

1180 If the Printer supports the Set-Job-Attributes operation, then it SHOULD support setting of:  
1181 all Job Template ("xxx") attributes (see [ipp-mod] section 4.2 and extensions)  
1182 that the implementation supports.

1183 The following Job Description attributes (see [ipp-mod] section 4.3) MUST NOT be settable, i.e., they are  
1184 READ-ONLY:

1185 job-uri  
1186 job-id  
1187 job-printer-uri  
1188 job-more-info  
1189 job-originating-user-name - set in create operation  
1190 job-state  
1191 job-state-reasons  
1192 job-state-message  
1193 number-of-documents  
1194 output-device-assigned  
1195 time-at-creation  
1196 time-at-processing  
1197 time-at-completed  
1198 job-printer-up-time  
1199 date-time-at-creation  
1200 date-time-at-processing  
1201 date-time-at-completed  
1202 number-of-intervening-jobs  
1203 job-k-octets  
1204 job-k-octets-processed  
1205 job-impressions-completed  
1206 job-media-sheets-completed  
1207 attributes-charset - set in [Job Creation](#) operation  
1208 attributes-natural-language - set in [Job Creation](#) operation

1209 The following Set2 Job Description attributes are READ-ONLY:

1210 [original-requesting-user-name - set in Job Creation operation](#)

1211 The remaining Job Description attributes MAY be settable using the Set-Job-Attributes operation,  
1212 depending on implementation.

1213 Whether or not the Set-Job-Attributes operation affects jobs that are submitted using job submission  
1214 protocols other than IPP, depends on implementation, i.e., on whether the IPP protocol is being used as a  
1215 universal management protocol or just to manage IPP jobs, respectively. See "printer-controls-other-  
1216 protocols" (section 4.3).

1217 *Access Rights:* Authentication and access control (see [ipp-mod] sections 1, 8.3, and 8.5) apply to this  
1218 operation.

#### 1219 8.2.1.2 Set-Job-Attributes Request

1220 The following sets of attributes are part of the Set-Job-Attributes Request:

##### 1221 Group 1: Operation Attributes

1222 Natural Language and Character Set:

1223 The "attributes-charset" and "attributes-natural-language" attributes as described in [ipp-mod]  
1224 section 3.1.4.1.

1225

## 1226 Target:

1227 Either (1) the "printer-uri" (uri) plus "job-id" (integer(1:MAX)) or (2) the "job-uri" (uri) operation  
1228 attribute(s) which define the target for this operation as described in [ipp-mod] section 3.1.5.  
1229

## 1230 Requesting User Name:

1231 The "requesting-user-name" (name(MAX)) attribute SHOULD be supplied by the client as  
1232 described in [ipp-mod] section 8.3.  
1233  
1234

## 1235 Group 2: Job Attributes

1236 The client MUST supply a set of Job attributes as defined in [ipp-mod] section 4.2 Job Template  
1237 Attributes ("xxx" attributes) and section 4.3 Job Description Attributes. Each Job attribute supplied  
1238 in Group 2 replaces the value(s) of the corresponding Job attribute on the target Job object. For  
1239 attributes that can have multiple values (1setOf), all values supplied by the client replace all values  
1240 of the corresponding Job object attribute.  
1241

## 1242 8.2.1.3 Set-Job-Attributes Response

1243 The Printer object returns the following sets of attributes as part of the Set-Job-Attributes Response:

## 1244 Group 1: Operation Attributes

## 1245 Status Message:

1246 In addition to the REQUIRED status code returned in every response, the response OPTIONALLY  
1247 includes a "status-message" (text(255)) and/or a "detailed-status-message" (text(MAX)) operation  
1248 attribute as described in [ipp-mod] sections 13 and 3.1.6.  
1249

## 1250 Natural Language and Character Set:

1251 The "attributes-charset" and "attributes-natural-language" attributes as described in [ipp-mod]  
1252 section 3.1.4.2.  
1253

## 1254 Group 2: Unsupported Attributes

1255 See [ipp-mod] section 3.1.7 for details on returning Unsupported Attributes.  
1256

1257 The attributes returned are the same as for the create operation with the same new attribute values.  
1258 In the case of attributes that are supported, but are not settable by the implementation, i.e., are not  
1259 among the values of the Printer's "settable-attributes" Printer Description attribute (see section 4.1),  
1260 the Printer object returns the client-supplied attribute(s) with a substituted value of 'not-supported'  
1261 (same out-of-band value as for attributes that are not supported). This value's syntax type is "out-of-  
1262 band" and its encoding is defined by special rules for "out-of-band" values in the "Encoding and  
1263 Transport" document [IPP-PRO]. Its value indicates that the attribute is either not settable or is not  
1264 supported at all.

1265

## 1266 8.2.2 Reprocess-Job Operation

1267 This OPTIONAL operation is a create job operation that allows a client to re-process a copy of a job that  
1268 had been retained in the queue after processing completed, was canceled, or was aborted (see [ipp-mod]  
1269 section 4.3.7.2). This operation is the same as the Restart-Job operation (see [ipp-mod] section 3.3.7),  
1270 except that the Printer creates a new job that is a copy of the target job and the target job is unchanged. The  
1271 new job is assigned new values to the "job-uri" and "job-id" attributes and the new job's Job Description  
1272 attributes that accumulate job progress, such as "job-impressions-completed", "job-media-sheets-  
1273 completed", and "job-k-octets-processed", are initialized to 0 as with any create job operation. The target  
1274 job moves to the Job History after a suitable period, independent of whether one or more Reprocess-Job  
1275 operations have been performed on it.

1276 If the Set-Job-Attributes operation is supported, then the "job-hold-until" operation attribute MUST be  
1277 supported with at least the 'indefinite' value, so that a client can modify the new job before it is scheduled  
1278 for processing using the Set-Job-Attributes operation. After modifying the job, the client can release the  
1279 job for processing, by using the Release-Job operation specifying the newly assigned "job-uri" or "job-id"  
1280 for the new job.

1281

## 1282 8.2.3 Cancel-Current-Job Operation

1283 This OPTIONAL operation allows a client to cancel the current job on the target Printer or the specified job  
1284 if it is the current job on the Printer. See [ipp-mod] section 3.3.3 for the semantics of canceling a job.  
1285 Since a Job might already be marking by the time a Cancel-Current-Job is received, some media sheet  
1286 pages might be printed before the job is actually terminated.

1287 If the client does not supply a "job-id" operation attribute, the Printer MUST accept the request and cancel  
1288 the current job if there is a current job in the 'processing' or 'processing-stopped' state; otherwise, it MUST  
1289 reject the request and return the 'client-error-not-possible' status code. If more than one job is in the  
1290 'processing' or 'processing-stopped' states, the one that is marking is canceled and the others are unaffected.

1291 Warning: On a shared printer, there is a race condition. Between the time that a user issues this operation  
1292 and its acceptance, the current job might change to a different job. If the user or operator is authenticated to  
1293 cancel the new job, the wrong job is canceled. To prevent this race from canceling the wrong job, the client  
1294 MAY supply the "job-id" operation attribute which is checked against the current job's job-id. If the job  
1295 identified by the "job-id" attribute is not the current job on the Printer, i.e., is not in the 'processing' or  
1296 'processing-stopped' states, the Printer MUST reject this operation and return the 'client-error-not-possible'  
1297 status code. Otherwise, the Printer cancels the specified job.

1298 *Access Rights:* Authentication and access control (see [ipp-mod] sections 1, 8.3, and 8.5) apply to this  
1299 operation.

1300 The Cancel-Current-Job Request and Cancel-Current-Job Response have the same attribute groups and  
1301 attributes as the Resume-Printer operation (see [ipp-mod] section 3.2.8), including the new "job-message-  
1302 from-operator" operation attribute (see section 3.2), with the addition of the following Group 1 Operation  
1303 attributes in the request:

1304 "job-id" (integer(1:MAX)):

1305 The client OPTIONALLY supplies this Operation attribute in order to verify that the identified job  
1306 is still the current job on the target Printer object. The IPP object MUST supports this operation  
1307 attribute, if it supports this operation.

1308

## 1309 8.2.4 Pause-Current-Job operation

1310 ISSUE 14 - Since the semantics of Pause-Current-Job is different from Pause-Printer, in that other jobs are  
1311 processed, while this job is stopped, should we have a different name for the verb, such as Suspend-  
1312 Current-Job, instead of Pause-Current-Job. Otherwise, users may be mistakenly think that the printer is  
1313 paused when the job is paused. If the name is changes, then the 'job-paused' job state reason would also be  
1314 changed to 'job-suspended'.

1315 This OPTIONAL operation allows a client to stop the current job on the target Printer or the specified job if  
1316 it is the current job on the Printer, and allow other jobs to be processed instead. The Printer moves the  
1317 current job or the target job to the 'processing-stopped' state and sets the 'job-paused' value in the job's "job-  
1318 state-reasons" attribute and processes other jobs.

1319 If the client does not supply a "job-id" operation attribute, the Printer MUST accept the request and pause  
1320 the current job if there is a current job in the 'processing' or 'processing-stopped' state; otherwise, it MUST  
1321 reject the request and return the 'client-error-not-possible' status code. If more than one job is in the  
1322 'processing' or 'processing-stopped' states, all of them are paused.

1323 Warning: On a shared printer, there is a race condition. Between the time that a user issues this operation  
1324 and its acceptance, the current job might change to a different job. If the user or operator is authenticated to  
1325 pause the new job, the wrong job is paused. To prevent this race from pausing the wrong job, the client  
1326 MAY supply the "job-id" operation attribute which is checked against the current job's job-id. If the job  
1327 identified by the "job-id" attribute is not the current job on the Printer, i.e., is not in the 'processing' or  
1328 'processing-stopped' states, the Printer MUST reject this operation and return the 'client-error-not-possible'  
1329 status code. Otherwise, the Printer pauses the specified job and processed other jobs.

1330 A paused job is resumed using the Resume-Job operation (see section 8.2.5). If the Pause-Current-Job  
1331 operation is supported, then the Resume-Job operation MUST be supported, and vice-versa.

1332 The Printer MUST reject a Release-Job request (and return the 'client-error-not-possible') for a job that has  
1333 been paused , i.e., for a job in the 'processing-stopped' state, with the 'job-paused' value in its "job-state-  
1334 reasons" attribute. The Hold-Job and Release-Job operations are for holding and releasing held jobs, not  
1335 pausing and resuming paused jobs.

1336 ISSUE 15 - Ok for Pause-Job to reject a request for a Job that is already paused (like Cancel-Job), instead  
1337 of accepting the request?

1338 *Access Rights:* Authentication and access control (see [ipp-mod] sections 1, 8.3, and 8.5) apply to this  
1339 operation.

1340 The Pause-Current-Job Request and Pause-Current-Job Response have the same attribute groups and  
1341 attributes as the Resume-Printer operation (see [ipp-mod] section 3.2.8 ), including the new "job-message-  
1342 from-operator" operation attribute (see section 3.2), with the addition of the following Group 1 Operation  
1343 attributes in the request:



1344 "job-id" (integer(1:MAX)):

1345 The client OPTIONALLY supplies this Operation attribute in order to verify that the identified job  
1346 is still the current job on the target Printer object. The IPP object MUST supports this operation  
1347 attribute, if it supports this operation.

1348 "when" (type2 keyword)

1349 The client OPTIONALLY supplies this attribute. The Printer object OPTIONALLY supports this  
1350 attribute, if it supports this operation. The value of this attribute indicates when to pause the printer.  
1351 If the client omits this attribute, the Printer assumes the 'after-current-copy' value. The 'after-  
1352 current-copy' value is REQUIRED to be supported if the "when" attribute is supported; the  
1353 remaining values are OPTIONAL.

1354 Note: There is no way to query to see which values of the "when" attribute are supported for this or  
1355 any other operation. Since this operation is intended for Operators, rather than End-Users, it did not  
1356 seem necessary to provide the means to query the supported values.

1357  
1358 Standard keyword values are:

1359 'now' - pause the current Job immediately, while the current Job is processing.

1360 'after-current-copy' - pause the current Job after the current Job finishes printing its current  
1361 copy.

1362 **ISSUE 16 - Ok that the only values for the "when" operation attribute for the Pause-Current-Job are**  
1363 **'now' and 'after-current-copy' with 'now' being the default and REQUIRED?**

1364  
1365 "synchronize" (boolean)

1366 The client OPTIONALLY supplies this attribute. The Printer object OPTIONALLY supports this  
1367 attribute. This attribute indicates whether or not the printer is to synchronize the checkpoint data for  
1368 the current job being paused with the pages that have actually printed. If this attribute is supported,  
1369 then a value of 'true' implies that the Printer will be able to resume the job at the point of  
1370 synchronization when the job is resumed.

1371  
1372 If the Printer supports this attribute but the client does not supply it, the Printer is assumed to  
1373 perform synchronization ('true' behavior). If the Printer does not support this attribute, the Printer is  
1374 assumed to not synchronize ('false' behavior).

1375

## 1376 8.2.5 Resume-Job operation

1377 This OPTIONAL operation allows a client to resume the target job at the point where it was paused. The  
1378 Printer moves the target job to the 'pending' state and removes the 'job-paused' value from the job's "job-  
1379 state-reasons" attribute.

1380 If the target job is not in the 'processing-stopped' state with the 'job-paused' value in the job's "job-state-  
1381 reasons" attribute, the Printer rejects the request and returns the 'client-error-not-possible' status code, since  
1382 the job was not paused.

1383 **ISSUE 17 - Ok to return an error (like Cancel-Job), rather than having Resume-Job accept the request even  
1384 if the Job is already resumed (i.e., not paused)?**

1385 If the Resume-Job operation is supported, then the Pause-Current-Job operation MUST be supported, and  
1386 vice-versa.

1387 *Access Rights:* Authentication and access control (see [ipp-mod] sections 1, 8.3, and 8.5) apply to this  
1388 operation.

1389 The Resume-Job Request and Resume-Job Response have the same attribute groups and attributes as the  
1390 Release-Job operation (see [ipp-mod] section 3.3.6), including the new "job-message-from-operator"  
1391 operation attribute (see section 3.2).

1392

## 1393 8.2.6 Promote-Job operation

1394 This OPTIONAL operation allows a client to make the pending target job be processed next after the  
1395 current job completes. This operation is specially useful in a production printing environment where the  
1396 operator is involved in job scheduling.

1397 If the target job is in the 'pending' state, this operation does not change the job's state, but causes the job to  
1398 be processed after the current job(s) complete. If the target job is not in the 'pending' state, the Printer  
1399 rejects the request and returns the 'client-error-not-possible' status code. The Printer returns the target job  
1400 immediately after the current job(s) in a Get-Jobs response (see [ipp-mod] section 3.2.6) for the 'not-  
1401 completed' jobs.

1402 When the current job completes, is canceled, paused, or aborted, the target of this operation is processed  
1403 next.

1404 If a client issues this request (again) before the target of the operation of the original request started  
1405 processing, the target of this new request is scheduled before the previous job that was to be processed next.

1406 Note: IPP is specified not to require queues for job scheduling, since there are other implementations for  
1407 scheduling multiple jobs. However, if an implementation does implement queues for jobs, then the  
1408 Promote-Job puts the specified job at the front of the queue. A subsequent Promote-Job before the first job  
1409 starts processing puts that specified job at the front of the queue, so that it is "in front" of the previously  
1410 promoted job.

1411 *Access Rights:* Authentication and access control (see [ipp-mod] sections 1, 8.3, and 8.5) apply to this  
1412 operation.

1413 The Promote-Job Request and Promote-Job Response have the same attribute groups and attributes as the  
1414 Cancel-Job operation (see [ipp-mod] section 3.3.3), including the new "job-message-from-operator"  
1415 operation attribute (see section 3.2).

1416

## 1417 9 IANA Considerations

1418 The operations and attributes in this registration proposal will be published by IANA according to the  
1419 procedures in RFC 2566 [rfc2566] section 6.4 for operations with the following URL:

1420 <ftp.isi.edu/iana/assignments/ipp/operations/set2.txt>

## 1421 10 Internationalization Considerations

1422 This document has the same localization considerations as the [ipp-mod].

## 1423 11 Security Considerations

1424 The IPP Model and Semantics document [ipp-mod] discusses high level security requirements (Client  
1425 Authentication, Server Authentication and Operation Privacy). Client Authentication is the mechanism by  
1426 which the client proves its identity to the server in a secure manner. Server Authentication is the mechanism  
1427 by which the server proves its identity to the client in a secure manner. Operation Privacy is defined as a  
1428 mechanism for protecting operations from eavesdropping.

## 1429 12 Author's Addresses

1430 Carl Kugler

1431 IBM

1432 Boulder CA

1433

1434 Phone: (303) 924-5060

1435 FAX:

1436 e-mail: [kugler@us.ibm.com](mailto:kugler@us.ibm.com)

1437

1438 Tom Hastings

1439 Xerox Corporation

1440 737 Hawaii St. ESAE 231

1441 El Segundo, CA 90245

1442

1443 Phone: 310-333-6413

1444 Fax: 310-333-5514

1445 e-mail: [hastings@cp10.es.xerox.com](mailto:hastings@cp10.es.xerox.com)

1446

1447 Harry Lewis

1448 IBM

1449 Boulder CA

1450  
1451  
1452  
1453  
1454

Phone: (303) 924-5337  
FAX:  
e-mail: harryl@us.ibm.com

1455 13 References

1456 [ipp-mod]

1457 R. deBry, T. Hastings, R. Herriot, S. Isaacson, P. Powell, "Internet Printing Protocol/1.0: Model and  
1458 Semantics", <draft-ietf-ipp-model-v11-03.txt>, June, 1999.

1459 [RFC2566]

1460 R. deBry, T. Hastings, R. Herriot, S. Isaacson, P. Powell, "Internet Printing Protocol/1.0: Model and  
1461 Semantics", RFC 2566, April 1999.

1462 14 Change History

1463 This section summarizes the changes. Each sub-section is in reverse chronological order. Adding or  
1464 removing ISSUES that don't change the document are not listed here.

1465 14.1 Changes to the November 1, 1999 version to make the November 16, 1999 version

1466 The following changes to the October 22, 1999 version to make the November 1, 1999 version as a result of  
1467 the IPP WG meeting in Durham, 10/99:

- 1468 1. Formally defined IPP Printer fan-out, IPP Printer fan-in, and output device fan-out. Added figures to  
1469 show IPP Printer fan-out and IPP Printer fan-in.
- 1470 2. Added "parent-printers-supported (1setOf uri) Printer Description attribute to point back up the Printer  
1471 hierarchy.
- 1472 3. Added the requirements for forwarding operations that affect Jobs and for not forwarding operations  
1473 that affect Printers.
- 1474 4. Added "original-requesting-user-name" (name(MAX)) to represent the original end user, not the parent  
1475 Printer's host.
- 1476 5. Changed the default for "when" for the Pause-Printer operation from 'after-current-job' to 'now', since  
1477 that is the behavior in IPP/1.1 where the "when" operation attribute is not defined.
- 1478 6. Allowed a non-leaf Printer to have only one subordinate Printer.

1479 7. Changed most of the "parent" Printer terminology to "non-leaf" Printer to contrast more clearly with  
1480 "leaf" Printer objects. The term "parent" is only used when talking about a subordinate's immediate  
1481 parent Printer object.

1482 8. Added "original-requesting-user-name" (name (MAX)) to the list of READ-ONLY Job Description  
1483 attributes.

1484 14.2 Changes to the October 22, 1999 version to make the November 1, 1999 version

1485 The following changes to the October 22, 1999 version to make the November 1, 1999 version as a result of  
1486 the IPP WG meeting in Durham, 10/99:

- 1487 1. Removed the Reset-Printer, Non-Process-Run-Out, and Space-Current-Job operations from this Set2  
1488 spec and moved them to a new Set3 spec for use with the new Device object, renaming them  
1489 appropriately, to Reset-Device, Non-Process-Run-Out-Device, and Space-Device.
- 1490 2. Added the concept of parent and subordinate Printer objects to formally represent fan-out. Mentioned  
1491 the Device object that is in a new [ipp-set3] spec.
- 1492 3. Distributed the definition of the "when" operation attribute to the Pause-Printer (IPP/1.1), Shutdown-  
1493 Printer, and Pause-Current-Job operations and listed the values that are appropriate to that operation  
1494 only:  
1495 Pause-Printer: 'now', 'after-current-copy', 'after-current-job' (default), and 'after-all'.  
1496 Shutdown-Printer: 'now', 'after-current-job' (default), and 'after-all'  
1497 Pause-Current-Job: 'now', 'after-current-copy' (default)
- 1498 4. Deleted the "device-name" operation attribute and the "device-names-supported" (1setOf name(127))  
1499 Printer Description attribute. The latter will be part of the [ipp-set3] document.
- 1500 5. Kept the "job-settable-attributes" (1setOf type2 keyword) and "printer-settable-attributes" (1setOf type2  
1501 keyword), but deleted the "interpreter-settable-attributes" (1setOf type2 keyword), since the Interpreter  
1502 object and its attributes are really a sub-class of the Printer object.
- 1503 6. Deleted the "when-values-supported" (1setOf type2 keyword) Printer Description attribute.
- 1504 7. Added the "subordinate-printers-supported" (1setOf uri) Printer Description attribute.

1505 14.3 Changes to the September 19, 1999 version to make the October 22, 1999 version

1506 Adding or removing ISSUES that don't change the document are not listed here. The following changes to  
1507 the September 19, 1999 version to make the October 22, 1999 version as a result of the IPP WG meeting in  
1508 Denver, 9/99:

- 1509 1. Added the Interpreter object.

- 1510 2. Added the "device-name" operation attribute to handle passing operations through the IPP Printer object  
1511 to the device.
- 1512 3. Added the out-of-band 'not-settable' to allow the Set-Job-Attributes and Set-Printer-Attributes response  
1513 to indicate the difference between an unsupported attribute and a supported, but not settable, attribute in  
1514 the Unsupported Attributes Group.
- 1515 4. Removed "when-values-supported" and "job-settable-attributes" and "printer-settable-attributes" and  
1516 "interpreter-settable-attributes" from the list of attributes that MUST be read-only. So an administrator  
1517 could sub-set the policy on what when values are supported or which attributes can be set.

#### 1518 14.4 Changes to the July 19, 1999 version to make the September 19, 1999 version

1519 The following changes to the July 19, 1999 version to make the September 19, 1999 version as a result of  
1520 the IPP WG meeting in Alaska, 8/99:

- 1521 1. Refer to proposal as "Set2" rather than "Administrative" operations.
- 1522 2. Revise the emphasis on administrator throughout the document, although the word administrator  
1523 remains wherever appropriate.
- 1524 3. Convert non-process-run-out from an operations attribute to an operation.
- 1525 4. Added Issue 21: For all these "access" caveats, why not just say... 'authentication and access control  
1526 (see ipp-mod sections 1, 8.3 and 8.5) applies to this operation'.?
- 1527 5. Added Issue 22: Why? This is backward, if you ask me (HRL).
- 1528 6. Per resolution of Issue 2, the "settable-attributes" Printer Description attribute, was replaced with three  
1529 Printer Description attributes: "printer-settable-attributes", "job-settable-attributes", and "interpreter-  
1530 settable-attributes". The latter for those implementations that have different values for Printer attributes  
1531 in the Get-Printer-Attributes and Set-Printer-Attributes operations, depending on the value of the  
1532 "document-format" operation attribute supplied by the client. If and when we get a Document object,  
1533 then we can add a "document-settable-attributes" Printer Description attribute.

#### 1534 14.5 Changes to the June 30, 1999 version to make the July 19, 1999 version

1535 The following changes to the June 30, 1999 version to make the July 19, 1999 version as a result of the IPP  
1536 WG meeting in Copenhagen, 7/7/99-7/8/99, and the IPP telecon, 7/14/1999:

- 1537 1. Sections 2.1 and 2.2: Clarified that the way to remove a message from the operator was for the client to  
1538 supply a zero-length or all white space text string which is copied as usual to the "xxx-message-from-  
1539 operator" attribute.



- 1540 2. Section 2.3: Added "factory-settings" (boolean) operation attribute to the Get-Printer-Attributes  
1541 operation.
- 1542 3. Section 2.4: Added the "when" operation attribute to the Pause-Current-Job operation.
- 1543 4. Section 2.4: Made the "when" operation attribute OPTIONAL for use in operations (Pause-Printer,  
1544 Reset-Printer, Shutdown-Printer, and Pause-Current-Job operations).
- 1545 5. Sections 2.5: Added table of operation attributes for the Printer operations to make it easy to compare.
- 1546 6. Sections 2.6: Added table of operation attributes for the Job operations to make it easy to compare.
- 1547 7. Section 3.1: Added "settable-attributes" (1setOf type2 keyword) READ-ONLY Printer Description  
1548 attribute.
- 1549 8. Section 3.2: Added "printer-controls-other-protocols" (boolean) Printer Description attribute
- 1550 9. Section 3.3: Added the READ-ONLY "printer-message-time" (integer(MIN:MAX)) Printer  
1551 Description attribute to keep time message updated in time ticks.
- 1552 10. Section 4.2: Deleted the 'process-next' "job-state-reasons" value, so that repeated Promote-Job  
1553 operations promote each job "to the front of the queue".
- 1554 11. Sections 6.1.1.1 and 6.2.1.1: Replaced the table that listed all attributes with one that lists only the  
1555 attributes that MUST be READ-ONLY.
- 1556 12. Section 6.1.1.1: Indicated that attributes that are not specified as READ-ONLY in this document MAY  
1557 be settable. If they control behavior, that changing their values MUST change the behavior.
- 1558 13. Section 6.1.1.2 and 6.2.1.2: Deleted the "ipp-attribute-fidelity" operation attribute from the Set-Printer-  
1559 Attributes and Set-Job-Attributes operations. All set operations are atomic.
- 1560 14. Section 6.1.1.2: Add the concept of the Interpreter object to handle attributes whose values vary in the  
1561 Set-Printer-Attributes and Get-Printer-Attributes, depending on the value of the "document-format"  
1562 operation attribute.
- 1563 15. Sections 6.1.1.3 and 6.2.1.2: Changed the "out-of-band" 'not-settable' value back to the existing 'not-  
1564 supported' value.
- 1565 16. Section 6.1.2 and 6.1.3: Added "job-type" operation attribute to Disable-Printer and Enable-Printer  
1566 operations with values: 'network-jobs', 'walk-up-jobs', and 'all-jobs'.
- 1567 17. Section 6.1.5: Clarified that Restart-Printer brings up the Printer disabled and paused, since that is the  
1568 eventual state that Shutdown-Printer leaves the printer in.
- 1569 18. Section 6.1.5: Indicated that if Restart-Printer is supported, then Shutdown-Printer MUST be  
1570 supported.

- 1571 19. Section 6.1.6: Deleted Space-Printer operation. Keep Space-Current-Job operation only which has a  
1572 "job-id" operation attribute that a client MAY supply.
- 1573 20. Section 6.1.6: Clarified that Shutdown-Printer is for a long period of time, not just to reset the device or  
1574 change attribute values. Also that Shutdown performs an immediate Disable-Printer and an eventual  
1575 Pause-Printer.
- 1576 21. Sections 6.2.3, 6.2.4, and 6.2.7 : Added a "job-id" operation attribute to Cancel-Current-Job, Pause-  
1577 Current-Job, and Space-Current-Job that a client MAY supply to check for race condition where current  
1578 job changes
- 1579 22. Section 6.2.4: Combined Pause-Job into Pause-Current-Job operation.
- 1580 23. Sections 6.2.4 and 6.2.5: Pause-Current-Job puts job in 'processing-stopped' state, not 'pending-held'  
1581 state.
- 1582 24. Section 6.2.6: Simplified Promote-Job, so that it behaves as if the job were put at the front of the  
1583 queue.

1584 15 Appendix A: Full Copyright Statement

1585 Copyright (C) The Internet Society (1998,1999). All Rights Reserved

1586 This document and translations of it may be copied and furnished to others, and derivative works that  
1587 comment on or otherwise explain it or assist in its implementation may be prepared, copied, published and  
1588 distributed, in whole or in part, without restriction of any kind, provided that the above copyright notice and  
1589 this paragraph are included on all such copies and derivative works. However, this document itself may not  
1590 be modified in any way, such as by removing the copyright notice or references to the Internet Society or  
1591 other Internet organizations, except as needed for the purpose of developing Internet standards in which  
1592 case the procedures for copyrights defined in the Internet Standards process must be followed, or as  
1593 required to translate it into languages other than English.

1594 The limited permissions granted above are perpetual and will not be revoked by the Internet Society or its  
1595 successors or assigns.

1596 This document and the information contained herein is provided on an "AS IS" basis and THE INTERNET  
1597 SOCIETY AND THE INTERNET ENGINEERING TASK FORCE DISCLAIMS ALL WARRANTIES,  
1598 EXPRESS OR IMPLIED, INCLUDING BUT NOT LIMITED TO ANY WARRANTY THAT THE USE  
1599 OF THE INFORMATION HEREIN WILL NOT INFRINGE ANY RIGHTS OR ANY IMPLIED  
1600 WARRANTIES OF MERCHANTABILITY OR FITNESS FOR A PARTICULAR PURPOSE.