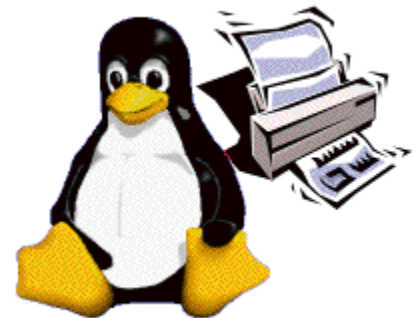




# Job Ticket Application Programming Interface (JTAPI)

Version 0.97  
January 18, 2005



## Abstract

The Free Standards Group (FSG) OpenPrinting Job Ticket Application Programming Interface (JTAPI) provides an abstract interface for applications to read, edit, and write document processing job tickets (defined outside this specification). This specification defines an abstract model of objects (jobs, documents, etc.) and their operations and attributes for document processing (e.g. scanning, printing, copying, etc.). This specification also defines C language bindings of this abstract object model (including standard header files).

Copyright 2004-2005, Free Standards Group

## **Copyright Notice**

Copyright (c) 2004-2005 Free Standards Group

Permission is hereby granted, free of charge, to any person obtaining a copy of this documentation files, to deal in the documentation without restriction, including without limitation the rights to use, copy, modify, merge, publish, distribute, sublicense, and/or sell copies of the documentation, and to permit persons to whom the Software is furnished to do so, subject to the following conditions:

The above copyright notice and this permission notice shall be included in all copies or substantial portions of the documentation.

THE DOCUMENTATION IS PROVIDED "AS IS", WITHOUT WARRANTY OF ANY KIND, EXPRESS OR IMPLIED, INCLUDING BUT NOT LIMITED TO THE WARRANTIES OF MERCHANTABILITY, FITNESS FOR A PARTICULAR PURPOSE AND NONINFRINGEMENT. IN NO EVENT SHALL THE AUTHORS OR COPYRIGHT HOLDERS BE LIABLE FOR ANY CLAIM, DAMAGES OR OTHER LIABILITY, WHETHER IN AN ACTION OF CONTRACT, TORT OR OTHERWISE, ARISING FROM, OUT OF OR IN CONNECTION WITH THE DOCUMENTATION OR THE USE OR OTHER DEALINGS IN THE DOCUMENTATION.

Linux is a trademark of Linus Torvalds.

UNIX is a registered trademark of the Open Group in the United States and other countries.

## Table of Contents

<b>1.</b>	<b>INTRODUCTION.....</b>	<b>6</b>
<b>2.</b>	<b>PUBLIC STANDARD JOB TICKETS.....</b>	<b>7</b>
<b>3.</b>	<b>OVERVIEW.....</b>	<b>8</b>
3.1	PRINT ENVIRONMENTS .....	8
3.2	HIGH LEVEL MODEL .....	9
3.3	LINKING WITH JTAPI .....	11
3.4	CONFORMANCE WITH JTAPI.....	11
3.5	INTERNATIONALIZATION .....	11
3.6	SECURITY .....	11
<b>4.</b>	<b>APPLICATION PROGRAMMING INTERFACE SUMMARY.....</b>	<b>12</b>
<b>5.</b>	<b>TOP LEVEL APPLICATION PROGRAMMING INTERFACE .....</b>	<b>14</b>
5.1	FSGJTOPENJTAPI.....	14
5.2	FSGJTFLUSHJTAPI .....	15
5.3	FSGJTCLOSEJTAPI.....	16
<b>6.</b>	<b>FUNCTIONAL LEVEL APPLICATION PROGRAMMING INTERFACE.....</b>	<b>17</b>
6.1	FSGJTDESTROY.....	17
6.2	FSGJTGET .....	18
6.3	FSGJTSET.....	19
6.4	FSGJTSETINTEGERATTRIBUTE.....	20
6.5	FSGJTSETOBJECTATTRIBUTE .....	21
6.6	FSGJTSETOBJECTATTRIBUTEList .....	22
6.7	FSGJTSETSTRINGATTRIBUTE.....	23
6.8	FSGJTSETSTRINGATTRIBUTEList.....	24
<b>7.</b>	<b>ATTRIBUTE LEVEL APPLICATION PROGRAMMING INTERFACES.....</b>	<b>25</b>
7.1	FSGJTNEWATTRIBUTE .....	25
7.2	FSGJTDESTORYATTRIBUTE.....	26
7.3	FSGJTADDVALUE .....	27
7.4	FSGJTGETNAME .....	28
7.5	FSGJTGETNEXTVALUE.....	29
7.6	FSGJTGETNUMVALUES .....	30
7.7	FSGJTGETVALUETYPE .....	31
7.8	FSGJTREPLACEVALUE .....	32
7.9	FSGJTRESETTOFIRSTVALUE.....	33
<b>8.</b>	<b>OBJECT LEVEL APPLICATION PROGRAMMING INTERFACES .....</b>	<b>34</b>
8.1	FSGJTNEWCONTACTINFO.....	34
8.2	FSGJTNEWDESTINATION .....	35
8.3	FSGJTNEWDOCUMENT.....	36
8.4	FSGJTNEWDOCUMENTFROMURI .....	37
8.5	FSGJTNEWINSERTSHEET .....	38
8.6	FSGJTNEWJOB .....	39
8.7	FSGJTNEWJOBFROMDOCUMENT .....	40
8.8	FSGJTNEWJOBTICKETINFO.....	41

8.9	FSGJTNEWJOBTICKETINFOFROMURI .....	42
8.10	FSGJTNEWJOBTICKETINFOFROMBUFFER.....	43
8.11	FSGJTNEWJOBTICKETINFOFROMJOB .....	44
8.12	FSGJTWRITEJOBTICKETINFOTOBUFFER.....	45
8.13	FSGJTWRITEJOBTICKETINFOTOURI .....	46
8.14	FSGJTNEWFOLDING.....	47
8.15	FSGJTNEWFORCEPAGE.....	48
8.16	FSGJTNEWHOLEMAKING .....	49
8.17	FSGJTNEWMEDIA .....	50
8.18	FSGJTNEWPAGERANGE.....	51
8.19	FSGJTNEWSEPARATORSHEET .....	52
8.20	FSGJTNEWSTITCHING .....	53
8.21	FSGJTNEWSUBSCRIPTION .....	54
<b>9.</b>	<b>OBJECT LEVEL APPLICATION PROGRAMMING INTERFACES CONFORMANCE SUMMARY ...</b>	<b>55</b>
<b>10.</b>	<b>CONTACTINFO.....</b>	<b>56</b>
10.1	CONTACTINFO ATTRIBUTES & CONFORMANCE.....	56
<b>11.</b>	<b>DESTINATION.....</b>	<b>57</b>
11.1	DESTINATION ATTRIBUTES & CONFORMANCE .....	57
<b>12.</b>	<b>DOCUMENT.....</b>	<b>58</b>
12.1	DOCUMENT ATTRIBUTES & CONFORMANCE .....	58
<b>13.</b>	<b>FOLDING .....</b>	<b>59</b>
13.1	FOLDING ATTRIBUTES & CONFORMANCE .....	59
<b>14.</b>	<b>FORCEPAGE.....</b>	<b>60</b>
14.1	FORCEPAGE ATTRIBUTES & CONFORMANCE .....	60
<b>15.</b>	<b>HOLEMAKING .....</b>	<b>61</b>
15.1	HOLEMAKING ATTRIBUTES & CONFORMANCE .....	61
<b>16.</b>	<b>INSERTSHEET.....</b>	<b>62</b>
16.1	INSERTSHEET ATTRIBUTES & CONFORMANCE .....	62
<b>17.</b>	<b>JOB.....</b>	<b>63</b>
17.1	JOB ATTRIBUTES & CONFORMANCE.....	63
<b>18.</b>	<b>JOBDOCUMENTPAGE .....</b>	<b>65</b>
18.1	JOBDOCUMENTPAGE ATTRIBUTES & CONFORMANCE.....	65
<b>19.</b>	<b>JOBTICKETINFO.....</b>	<b>66</b>
19.1	JOBTICKETINFO ATTRIBUTES & CONFORMANCE .....	66
<b>20.</b>	<b>MEDIA .....</b>	<b>67</b>
20.1	MEDIA ATTRIBUTES & CONFORMANCE.....	67
<b>21.</b>	<b>PAGE RANGE .....</b>	<b>68</b>
21.1	PAGE RANGE ATTRIBUTES & CONFORMANCE.....	68
<b>22.</b>	<b>SEPARATORSHEET.....</b>	<b>69</b>
22.1	SEPARATORSHEET ATTRIBUTES & CONFORMANCE .....	69
<b>23.</b>	<b>STITCHING .....</b>	<b>70</b>

23.1 STITCHING ATTRIBUTES & CONFORMANCE.....70

**24. SUBSCRIPTION.....71**

24.1 SUBSCRIPTION ATTRIBUTES & CONFORMANCE.....71

**APPENDIX: A - NORMATIVE REFERENCES.....72**

**APPENDIX: B - INFORMATIVE REFERENCES.....73**

**APPENDIX: C - TERMINOLOGY AND ACRONYMS .....74**

CONFORMANCE TERMINOLOGY .....74

OTHER TERMINOLOGY.....75

ACRONYMS.....75

**CHANGES .....78**

## **1. Introduction**

This specification describes and defines the Free Standards Group (FSG) Open Printing Job Ticket Application Programming Interface (JTAPI) for the Free Standards Group. The JTAPI defines the abstract interface and does not define a specific job ticket, job ticket file format or job ticket syntax. An implementation of the JTAPI produces and/or consumes one or more standard or vendor specific job ticket formats.

This specification is intended for software developers, designers and architects that need to read and/or write job tickets.

The purpose of this specification is to define an open standard, the Job Ticket Application Programming, for open printing on Linux/Unix/Posix/Windows/Macintosh/Embedded platforms. A JTAPI implementation produces and consumes job tickets. The JTAPI is job ticket syntax neutral. The JTAPI isolates an application from the syntax of a job ticket to hide details and the structural complexity of specific job ticket along with interoperability between different job ticket file formats. The JTAPI abstract model is programming language neutral.

## 2. Public Standard Job Tickets

The International Cooperation for the Integration of Process in Prepress, Press and Postpress (CIP4) is a joint initiative of vendors for the graphical arts industry [cip4]. CIP4 has published a Job Definition Format (JDF) specification. JDF is a comprehensive XML-based file format proposed industry standard for end-to-end job ticket specifications combined with a message description standard and message interchange protocol to cover all aspects of the commercial printing workflows.

JDF / 1.0 was published April of 2001. JDF / 1.1 was published in August 2002 [jdf]. JDF / 1.2 was published in May 2004. JDF / 1.3 is due to be published the mid 2005. Yearly updates are foreseen as the needs of the printing industry evolve.

The Printer Working Group (PWG) is a joint initiative of printer vendors and print system providers to develop printing protocol standards for use on the Internet and within enterprises on their intranets [pwg]. The PWG has published the Internet Printing Protocol (IPP) in September 2000 [rfc2910, rfc2911]

The PWG is in the process of publishing the PWG Semantic Model which summarizes the printing semantics common to a number of printing protocols, centered on the IPP semantics [pwg-sm]. The PWG Semantic Model includes an XML Schema definition. Therefore, an XML Job Ticket using the semantics of the PWG Semantic Model is possible.

### 3. Overview

#### 3.1 Print Environments

##### Mobile

PDA, cell phone, STB

Small memory

Sometime slow processors

Simple print – no finishing

Sort documents

Often low speed wireless (Bluetooth, 802.11)

Single job and single document

no layout

simplex only

wireless and/or direct connect print

##### Desktop/Home

Desktop computers

Low page per minute rate (< 50 ppm B/W , < 20 color)

No finishing

Inkjet color, laser color/bw

Multiple jobs and single doc

Simple layout

Home network (lan) and/or direct connect

Simplex only and manual duplex

##### Office

Multiple jobs and multiple doc

Simple layout

Office network (lan or wan) and/or direct connect

Simple finishing (stamplng, sorting, collating, etc.)

Duplex

Ppm 50- 100 ppm bw 20-60 ppm color

Desktop computer



**Production**

Complex finishing

Network connect (not wireless, not direct connection)

Ppm > 100 BW ppm > 60 color

Multiple jobs and multiple doc

Job variable data content

Duplex

Complex layout (large media sizes)

Continue feed/cut sheet

Multiple marking engines

Overprinting for control data

[ Describe the Embedded/ Mobile, Desktop/Home, Office/Network, and Production environments. ]

**3.2 High Level Model**

The JTAPI is object oriented extensible API. Figure 1.0 and 2.0 diagrams the JTAPI high level model and the relationship between JTAPI objects. A job ticket information object (JobTicketInfo) contains one job object (Job) where the job contains zero or more document objects (Document). The JobDocumentPage object is abstract and contains functionality that is common to jobs, documents, and specific pages in a job or document. Each of the other objects in the diagrams represents functionality that can be specified for the Job and Document objects. For example, the Media object represents the media that the job, document, or specific pages in the job or document is to be imaged/printed on. The section following the diagrams contains more detailed descriptions of each of the objects in the JTAPI model.

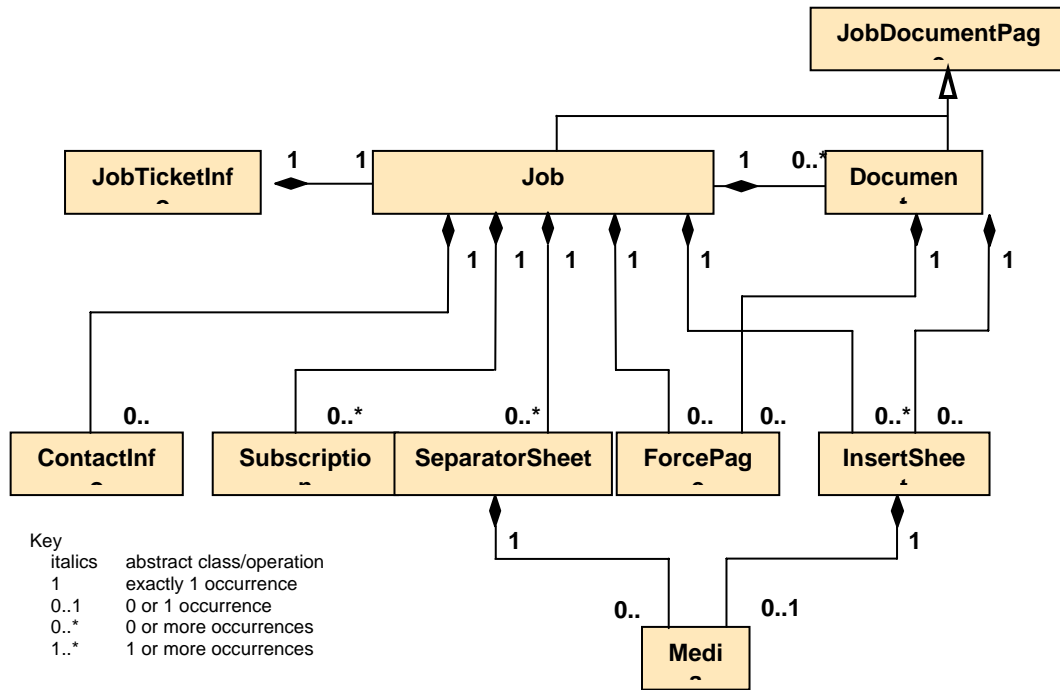


Figure 1.0 JTAPI High Level Object Model

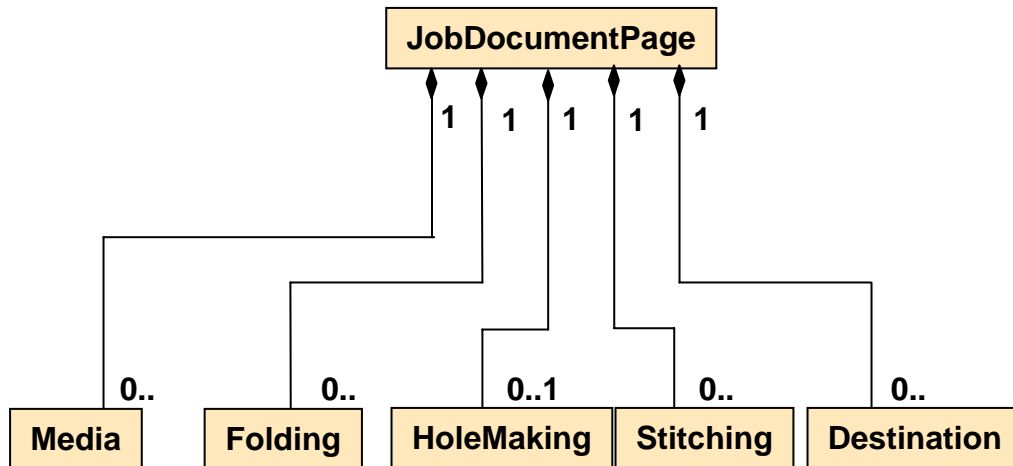


Figure 2.0 JTAPI JobDocumentPage High Level Object Model

### 3.3 Linking with JTAPI

The Job Ticket API can be provided in the form of a static or dynamic link library. Linking of library details are operating system dependent and will not be elaborated in this specification.

### 3.4 Conformance with JTAPI

A conforming library implementation of the Job Ticket API v1.0:

- (1) MUST support the abstract object model defined in Section 9 of this specification;
- (2) MUST publish the set of standard header files verbatim of this specification.
- (3) MAY publish one or more sets of vendor extension header files;
- (4) MUST support every required object and attribute (with at least one supported value) defined in this specification;
- (5) MAY support any optional object or attribute (with at least one supported value) defined in this specification;
- (6) MAY support read/write to one or more industry standard or vendor specific job ticket formats (defined outside this specification).
- (7) MUST identify supported job ticket formats in any claim of conformance to this specification.

### 3.5 Internationalization

Each library implementation of the Job Ticket API MUST accept a charset tag [RFC2978] to specify the character set and encoding for all text strings in the JT\_Charset. Each library implementation of the Job Ticket API MUST default to the UTF-8 [RFC2279] transform of [ISO10646] for text strings.

The Job Ticket API supports the transfer of language tags [RFC3066] to specify the natural language of text strings. Therefore the Job Ticket API fully conforms to the IETF Policy on Character Sets and Languages [RFC2277].

### 3.6 Security

The Job Ticket API does not support the transfer of any user security credentials. Each implementation of the Job Ticket API is a library that may be statically or dynamically linked with an application program. The application program itself may be authenticated and authorized by the native host operating system (by means outside the scope of this specification) for read and/or write access to job tickets stored on local or network file systems. A conforming implementation MUST not store any sensitive information (password, private keys, etc). The JTAPI does not define or support encryption of a job ticket.

#### 4. Application Programming Interface Summary

Object	Header	API Request	
---	fsgjt.h	fsgjtOpenJTAPI	context
---	fsgjt.h	fsgjtFlushJTAPI	context
---	fsgjt.h	fsgjtCloseJTAPI	context
all	fsgjt.h	fsgjtDestroy	object
all	fsgjt.h	fsgjtGet	object, attributeName, attribute
all	fsgjt.h	fsgjtSet	object, attribute
all	fsgjt.h	fsgjtSetIntegerAttribute	object, attributeName, value
all	fsgjt.h	fsgjtSetObjectAttribute	object, attributeName, value
all	fsgjt.h	fsgjtSetObjectAttributeList	object, attributeName, list
all	fsgjt.h	fsgjtSetStringAttribute	object, attributeName, value
all	fsgjt.h	fsgjtSetStringAttributeList	object, attributeName, list
all	fsgjt_attribute.h	fsgjtNewAttribute	attribute, name, type, value
all	fsgjt_attribute.h	fsgjtDestoryAttribute	attribute
all	fsgjt_attribute.h	fsgjtAddValue	attribute, value
all	fsgjt_attribute.h	fsgjtGetName	attribute, name
all	fsgjt_attriubte.h	fsgjtGetNextValue	attribute, nextValue, moreValues
all	fsgjt_attribute.h	fsgjtGetNumValues	attribute, numValues
all	fsgjt_attribute.h	fsgjtGetValueType	attribute, type
all	fsgjt_attribute.h	fsgjtReplaceValue	attribute, value
all	fsgjt_attribute.h	fsgjtResetToFirstValue	attribute
contactInfo	fsgjt_contact_info.h	fsgjtNewContactInfo	contactInfo, name
destination	fsgjt_destination.h	fsgjtNewDestination	destination, targetUri
document	fsgjt_document.h	fsgjtNewDocument	document
document	fsgjt_document.h	fsgjtNewDocumentFromURI	document, uri
insert sheet	fsgjt_insert_sheet.h	fsgjtNewInsertSheet	insertSheet, position, pages
job	fsgjt_job.h	fsgjtNewJob	job
job	fsgjt_job.h	fsgjtNewJobFromDocument	job, document
job ticket info	fsgjt_job_ticket_info.h	fsgjtNewJobTicketInfo	jobTicketInfo, typeAndVersion
job ticket info	fsgjt_job_ticket_info.h	fsgjtNewJobTicketFromURI	jobTicketInfo, uri, typeAndVersion
job ticket info	fsgjt_job_ticket_info.h	fsgjtNewJobTicketFromBuffer	jobTicketInfo, buffer, bufferSize, typeAndVersion
job ticket info	fsgjt_job_ticket_info.h	fsgjtNewJobTicketFromJob	jobTicketInfo, job, typeAndVersion
job ticket info	fsgjt_job_ticket_info.h	fsgjtWriteJobTicketToBuffer	jobTicketInfo, buffer, bufferSize
job ticket info	fsgjt_job_ticket_info.h	fsgjtWriteJobTicketToURI	jobTicketInfo, uri
folding	fsgjt_folding.h	fsgjtNewFolding	folding, foldingType
force page	fsgjt_force_page.h	fsgjtNewForcePage	forcePage, page, sheetSide

Object	Header	API Request	
hole making	fsgjt_hole_making.h	fsgjtNewHoleMaking	holeMaking, holeCount
media	fsgjt_media.h	fsgjtNewMedia	media, name
page range	fsgjt_page_range.h	fsgjtNewPageRange	pageRange, lower, upper
separator sheet	Fsgjt_separator_sheet.h	fsgjtNewSeparatorSheet	separatorSheet, separatorSheetType
stitching	fsgjt_stitching.h	fsgjtNewStitching	stitching, stitchType
subscription	fsgjt_subscription	fsgjtNewSubscription	subscription, sendToUri

## 5. Top Level Application Programming Interface

The top level JTAPI is used for system level and/or a specific implementation of JTAPI to perform initialization and release of resources and/or system level protocols.

### 5.1 fsgjtOpenJTAPI

<b>Syntax:</b>	fsgjt_return_code_t fsgjtOpenJTAPI(context);		
<b>Parameters:</b>	void **	context	Pointer to opaque JTAPI interface structure context structure
<b>Return Status:</b>	FSGJT_OK FSGJT_INTERNAL_ERROR FSGJT_INVALID_REQUEST FSGJT_MISSING_PARAM		
<b>Impact Level:</b>	Library		
<b>Description:</b>	Initializes the JTAPI library and may return context structure used by the specific JTAPI library instance – must be called before calling any other JTAPI library methods.		
<b>Constraints, Limitation, Restrictions</b>	This API call must be called before calling any other JTAPI calls.		
<b>Also See:</b>	fsgjtCloseJTAPI		

## 5.2 fsgjtFlushJTAPI

<b>Syntax:</b>	fsgjt_return_code_t fsgjtFlushJTAPI(context);		
<b>Parameters:</b>	void *	context	Opaque JTAPI structure context structure
<b>Return Status:</b>	FSGJT_OK FSGJT_INTERNAL_ERROR FSGJT_INVALID_REQUEST FSGJT_MISSING_PARAM		
<b>Impact Level:</b>	Library		
<b>Description:</b>	Releases all objects and dynamic memory allocations and closes any I/O channels associated with this specific JTAPI library instance.		
<b>Constraints, Limitation, Restrictions</b>			
<b>Also See:</b>	fsgjtCloseJTAPI		

### 5.3 fsgjtCloseJTAPI

<b>Syntax:</b>	fsgjt_return_code_t fsgjtCloseJTAPI(context);		
<b>Parameters:</b>	void *	context	Opaque JTAPI interface context structure
<b>Return Status:</b>	FSGJT_OK FSGJT_INTERNAL_ERROR FSGJT_INVALID_REQUEST FSGJT_MISSING_PARAM		
<b>Impact Level:</b>	Library		
<b>Description:</b>	Releases this specific JTAPI library instance (and internally calls fsgjtFlushJTAPI).		
<b>Constraints, Limitation, Restrictions</b>	This API call must be called after calling any other JTAPI calls.		
<b>Also See:</b>	fsgjtOpenJTAPI		



## 6. Functional Level Application Programming Interface

Functional level JTAPI calls for used to create, manipulate and store job tickets. The API's are segmented into generic API calls that are useable for any object, attribute API calls that useable for any attribute, and API calls for specific objects.

### 6.1 fsgjtDestroy

<b>Syntax:</b>	fsgjt_return_code_t fsgjtDestroy(object);		
<b>Parameters:</b>	fsgjt_object_t	object	Object to free.
<b>Return Status:</b>	FSGJT_OK FSGJT_INTERNAL_ERROR FSGJT_INVALID_REQUEST FSGJT_INVALID_PARAM FSGJT_MISSING_PARAM		
<b>Impact Level:</b>	Object		
<b>Description:</b>	Free the memory used by the provided object.		
<b>Constraints, Limitation, Restrictions</b>	“fsgjtDestory MUST be called to free each object allocation during session, otherwise memory leaks will occur. Before calling fsgitCloseJTAPI, fsgjtDestory MUST be called to free each object allocation during session. Destroying higher-level objects will automatically destroy lower level objects.		
<b>Also See:</b>	FsgjtFlushJTAPI		
<b>Header:</b>	fsgjt.h		

## 6.2 fsgjtGet

<b>Syntax:</b>	fsgjt_return_code_t fsgjtGet(object, attributeName, attribute);		
<b>Parameters:</b>	fsgjt_object_t	object	Object from which to get the attribute.
	fsgjt_text_t	attributeName	Name of the attribute to get.
	fsgjt_attribute_t *	attribute	Attribute having provided name.
<b>Return Status:</b>	FSGJT_OK FSGJT_INTERNAL_ERROR FSGJT_INVALID_REQUEST FSGJT_INVALID_PARAM FSGJT_MISSING_PARAM		
<b>Impact Level:</b>	Attribute		
<b>Description:</b>	Gets the attribute having the provided name.		
<b>Constraints, Limitation, Restrictions</b>			
<b>Also See:</b>			
<b>Header:</b>	fsgjt.h		

### 6.3 fsgjtSet

<b>Syntax:</b>	fsgjt_return_code_t fsgjtSet(object, attribute);		
<b>Parameters:</b>	fsgjt_object_t	object	Object in which to set the attribute
	fsgjt_attribute_t	attribute	Attribute to set
<b>Return Status:</b>	FSGJT_OK FSGJT_INTERNAL_ERROR FSGJT_INVALID_REQUEST FSGJT_INVALID_PARAM FSGJT_MISSING_PARAM		
<b>Impact Level:</b>	Attribute		
<b>Description:</b>	Sets the provided attribute for the provided object.		
<b>Constraints, Limitation, Restrictions</b>			
<b>Also See:</b>			
<b>Header:</b>	fsgjt.h		

## 6.4 fsgjtSetIntegerAttribute

<b>Syntax:</b>	fsgjt_return_code_t fsgjtSetIntegerAttribute(object, attributeName, value);		
<b>Parameters:</b>	fsgjt_object_t	object	Set the attribute for this object.
	fsgjt_text_t	attributeName	Name of the attribute to set.
	fsgjt_int32_t	value	New value for the integer-attribute.
<b>Return Status:</b>	FSGJT_OK FSGJT_INTERNAL_ERROR FSGJT_INVALID_REQUEST FSGJT_INVALID_PARAM FSGJT_MISSING_PARAM		
<b>Impact Level:</b>	Attribute		
<b>Description:</b>	Convenience function for setting an integer attribute to the provided value. This function creates a fsgjt_attribute_t, calls the fsgjtSet() function and then destroys the temporary Attribute.		
<b>Constraints, Limitation, Restrictions</b>			
<b>Also See:</b>			
<b>Header:</b>	fsgjt.h		

## 6.5 fsgjtSetObjectAttribute

<b>Syntax:</b>	fsgjt_return_code_t fsgjtSetObjectAttribute(object, attributeName, value);		
<b>Parameters:</b>	fsgjt_object_t	object	Set the attribute of this object.
	fsgjt_text_t	attributeName	Name of attribute to set.
	fsgjt_object_t	value	New value for the attribute.
<b>Return Status:</b>	FSGJT_OK FSGJT_INTERNAL_ERROR FSGJT_INVALID_REQUEST FSGJT_INVALID_PARAM FSGJT_MISSING_PARAM		
<b>Impact Level:</b>	Attribute		
<b>Description:</b>	Convenience function for setting an object Attribute to the provided value. This function creates a fsgjt_attribute_t, calls the fsgjtSet() function and then destroys the temporary Attribute.		
<b>Constraints, Limitation, Restrictions</b>			
<b>Also See:</b>			
<b>Header:</b>	fsgjt.h		

## 6.6 fsgjtSetObjectAttributeList

<b>Syntax:</b>	fsgjt_return_code_t fsgjtObjectAttributeList(object, attributeName, list);		
<b>Parameters:</b>	fsgjt_object_t	object	Set the Attribute for this object
	fsgjt_text_t	attributeName	Name of the Attribute to set
	fsgjt_object_t*	list	List of values for the Attribute.
<b>Return Status:</b>	FSGJT_OK FSGJT_INTERNAL_ERROR FSGJT_INVALID_REQUEST FSGJT_INVALID_PARAM FSGJT_MISSING_PARAM		
<b>Impact Level:</b>	Attribute		
<b>Description:</b>	Convenience function for setting an object Attribute to the provided list of values. This function creates a fsgjt_attribute_t, adds the values, calls the fsgjtSet() function and then destroys the temporary Attribute.		
<b>Constraints, Limitation, Restrictions</b>			
<b>Also See:</b>			
<b>Header:</b>	fsght.h		

## 6.7 fsgjtSetStringAttribute

<b>Syntax:</b>	fsgjt_return_code_t fsgjtSetStringAttribute(object, attributeName, value);		
<b>Parameters:</b>	fsgjt_object_t	object	Set the Attribute of this object
	fsgjt_text_t	attributeName	Name of Attribute to set
	char*	value	New value for the Attribute.
<b>Return Status:</b>	FSGJT_OK FSGJT_INTERNAL_ERROR FSGJT_INVALID_REQUEST FSGJT_INVALID_PARAM FSGJT_MISSING_PARAM		
<b>Impact Level:</b>	Attribute		
<b>Description:</b>	Convenience function for setting a string Attribute to the provided value. This function creates a fsgjt_attribute_t, calls the fsgjtSet() function and then destroys the temporary Attribute.		
<b>Constraints, Limitation, Restrictions</b>			
<b>Also See:</b>			
<b>Header:</b>	fsgjt.h		

## 6.8 fsgjtSetStringAttributeList

<b>Syntax:</b>	fsgjt_return_code_t fsgjtSetStringAttributeList(object, attributeName, values);		
<b>Parameters:</b>	fsgjt_object_t	object	Set the attribute for this object
	fsgjt_text_t	attributeName	Name of attribute to set
	fsgjt_text_t*	list	List of new values for the attribute.
<b>Return Status:</b>	FSGJT_OK FSGJT_INTERNAL_ERROR FSGJT_INVALID_REQUEST FSGJT_INVALID_PARAM FSGJT_MISSING_PARAM		
<b>Impact Level:</b>	Attribute		
<b>Description:</b>	Convenience function for setting a text Attribute list to the provided values. This function creates a fsgjt_attribute_t, calls the fsgjtSet() function and then destroys the temporary Attribute.		
<b>Constraints, Limitation, Restrictions</b>			
<b>Also See:</b>			
<b>Header:</b>	fsgjt.h		



## 7. Attribute Level Application Programming Interfaces

Attribute level JTAPI calls for used to create, manipulate and store object attributes.

### 7.1 fsgjtNewAttribute

<b>Syntax:</b>	fsgjt_return_code_t fsgjtNewAttribute(attribute, name, type, value);		
<b>Parameters:</b>	fsgjt_attribute_t*	attribute	Pointer to the new Attribute returned
	fsgjt_text_t	name	Name for the new Attribute to create
	fsgjt_text_t	type	Type for the new Attribute to create
	void*	value	Pointer to the value for this attribute.
<b>Return Status:</b>	FSGJT_OK FSGJT_INTERNAL_ERROR FSGJT_INVALID_PARAM FSGJT_MISSING_PARAM		
<b>Impact Level:</b>	Attribute		
<b>Description:</b>	Creates a new Attribute object attribute having the provided attribute name, value type, and value.		
<b>Constraints, Limitation, Restrictions</b>	Multiple values should be added with the fsgjtAddValue() function.		
<b>Also See:</b>			
<b>Header:</b>	fsgjt_attribute.h		

## 7.2 fsgjtDestoryAttribute

<b>Syntax:</b>	fsgjt_return_code_t fsgjtDestoryAttribute(attribute);		
<b>Parameters:</b>	fsgjt_attribute_t	attribute	Attribute to free.
<b>Return Status:</b>	FSGJT_OK FSGJT_INTERNAL_ERROR FSGJT_INVALID_PARAM FSGJT_MISSING_PARAM		
<b>Impact Level:</b>	Attribute		
<b>Description:</b>	Free the memory used by the Attribute.		
<b>Constraints, Limitation, Restrictions</b>			
<b>Also See:</b>			
<b>Header:</b>	fsgjt_attribute.h		

### 7.3 fsgjtAddValue

<b>Syntax:</b>	fsgjt_return_code_t fsgjtAddValue(attribute, value);		
<b>Parameters:</b>	fsgjt_attribute_t	attribute	Attribute to add the provided value to.
	void*	value	Pointer to value to add.
<b>Return Status:</b>	FSGJT_OK FSGJT_INTERNAL_ERROR FSGJT_INVALID_REQUEST FSGJT_NOT_SUPPPORTED		
<b>Impact Level:</b>	Attribute		
<b>Description:</b>	Add an additional value to this Attribute		
<b>Constraints, Limitation, Restrictions</b>			
<b>Also See:</b>			
<b>Header:</b>	fsgjt_attribute.h		

## 7.4 fsgjtGetName

<b>Syntax:</b>	fsgjt_return_code_t fsgjtGetName(attribute, name);		
<b>Parameters:</b>	fsgjt_attribute_t	attribute	Attribute whose name to get.
	fsgjt_text_t *	name	Name of the Attribute
<b>Return Status:</b>	FSGJT_OK FSGJT_INTERNAL_ERROR FSGJT_INVALID_PARAM FSGJT_MISSING_PARAM		
<b>Impact Level:</b>	Attribute		
<b>Description:</b>	Get the name of the Attribute.		
<b>Constraints, Limitation, Restrictions</b>			
<b>Also See:</b>			
<b>Header:</b>	fsgjt_attribute.h		

## 7.5 fsgjtGetNextValue

<b>Syntax:</b>	fsgjt_return_code_t fsgjtGetNextValue(attribute, nextValue, moreValues)		
<b>Parameters:</b>	fsgjt_attribute_t	attribute	Attribute whose next value is to be returned.
	void**	nextValue	Pointer to the next value.
	fsgjt_present_t*	moreValues	“On” if there are more values for the attribute for the Attribute other than the value being returned.
<b>Return Status:</b>	FSGJT_OK FSGJT_INTERNAL_ERROR FSGJT_INVALID_REQUEST FSGJT_INVALID_PARAM FSGJT_MISSING_PARAM		
<b>Impact Level:</b>	Attribute		
<b>Description:</b>	Return the Attribute’s next value.		
<b>Constraints, Limitation, Restrictions</b>			
<b>Also See:</b>			
<b>Header:</b>	fsgjt_attribute.h		

## 7.6 fsgjtGetNumValues

<b>Syntax:</b>	fsgjt_return_code_t fsgjtGetNumValues(attribute, numValues);		
<b>Parameters:</b>	fsgjt_attribute_t	attribute	Attribute whose number of values to get.
	fsgjt_int32_t*	numValues	Number of values
<b>Return Status:</b>	FSGJT_OK FSGJT_INTERNAL_ERROR FSGJT_INVALID_PARAM FSGJT_MISSING_PARAM		
<b>Impact Level:</b>	Attribute		
<b>Description:</b>	Get the number of values that the Attribute contains.		
<b>Constraints, Limitation, Restrictions</b>			
<b>Also See:</b>			
<b>Header:</b>	fsgjt_attribute.h		

## 7.7 fsgjtGetValueType

<b>Syntax:</b>	fsgjt_return_code_t fsgjtGetValueType(attribute, type);		
<b>Parameters:</b>	fsgjt_attribute_t	attribute	Attribute whose value type to get.
	fsgjt_text_t *	type	Type of this Attribute's values (use Value Types).
<b>Return Status:</b>	FSGJT_OK FSGJT_INTERNAL_ERROR FSGJT_INVALID_PARAM FSGJT_MISSING_PARAM		
<b>Impact Level:</b>	Attribute		
<b>Description:</b>	Returns the type of the Attribute's values.		
<b>Constraints, Limitation, Restrictions</b>			
<b>Also See:</b>			
<b>Header:</b>	fsgjt_attribute.h		

## 7.8 fsgjtReplaceValue

<b>Syntax:</b>	fsgjt_return_code_t fsgjtReplaceValue (attribute, value);		
<b>Parameters:</b>	fsgjt_attribute_t	attribute	Attribute to replace the existing value
	void*	value	Pointer to replacement value
<b>Return Status:</b>	FSGJT_OK FSGJT_INTERNAL_ERROR FSGJT_INVALID_PARAM FSGJT_MISSING_PARAM		
<b>Impact Level:</b>	Object		
<b>Description:</b>	Replaces the existing value for the Attribute with the provided value.		
<b>Constraints, Limitation, Restrictions</b>			
<b>Also See:</b>			
<b>Header:</b>	fsgjt_attribute.h		



**7.9 fsgjtResetToFirstValue**

<b>Syntax:</b>	fsgjt_return_code_t fsgjtResetToFirstValue(attribute);		
<b>Parameters:</b>	fsgjt_attribute_t	attribute	Attribute to reset
<b>Return Status:</b>	FSGJT_OK FSGJT_INTERNAL_ERROR FSGJT_INVALID_PARAM FSGJT_MISSING_PARAM		
<b>Impact Level:</b>	Object		
<b>Description:</b>	Reset the iterator to point to the first value of the Attribute.		
<b>Constraints, Limitation, Restrictions</b>			
<b>Also See:</b>			
<b>Header</b>	fsgjt_attribute.h		

## 8. Object Level Application Programming Interfaces

Object level JTAPI calls for used to create, manipulate and store objects.

### 8.1 fsgjtNewContactInfo

<b>Syntax:</b>	fsgjt_return_code_t fsgjtNewContactInfo(contactInfo, name);		
<b>Parameters:</b>	fsgjt_object_t*	contactInfo	Pointer to the new ContactInfo object to create.
	fsgjt_text_t	name	Name of person to contact or NULL if ContactInfo name not being specified.
<b>Return Status:</b>	FSGJT_OK FSGJT_INTERNAL_ERROR FSGJT_INVALID_PARAM FSGJT_MISSING_PARAM		
<b>Impact Level:</b>	Object		
<b>Description:</b>	Creates a ContactInfo object having the provided name.		
<b>Constraints, Limitation, Restrictions</b>			
<b>Also See:</b>			
<b>Header:</b>	fsgjt_contact_info.h		

## 8.2 fsgjtNewDestination

<b>Syntax:</b>	fsgjt_return_code_t fsgjtNewDestination(destination, targetUri);		
<b>Parameters:</b>	fsgjt_object_t*	destination	Pointer to the new Destination object to create.
	fsgjt_uri_t	targetUri	URI that is the target location for the this destination
<b>Return Status:</b>	FSGJT_OK FSGJT_INTERNAL_ERROR FSGJT_INVALID_PARAM FSGJT_MISSING_PARAM		
<b>Impact Level:</b>	Object		
<b>Description:</b>	Creates a Destination object having the provided target location URI.		
<b>Constraints, Limitation, Restrictions</b>			
<b>Also See:</b>			
<b>Header:</b>	fsgjt_destination.h		

### 8.3 fsgjtNewDocument

<b>Syntax:</b>	fsgjt_return_code_t fsgjtNewDocument(document);		
<b>Parameters:</b>	fsgjt_object_t*	document	Pointer to the new document to be created.
<b>Return Status:</b>	FSGJT_OK FSGJT_INTERNAL_ERROR FSGJT_INVALID_PARAM FSGJT_MISSING_PARAM		
<b>Impact Level:</b>	Object		
<b>Description:</b>	Create a Document object.		
<b>Constraints, Limitation, Restrictions</b>			
<b>Also See:</b>			
<b>Header:</b>	fsgjt_document.h		

#### 8.4 fsgjtNewDocumentFromURI

<b>Syntax:</b>	fsgjt_return_code_t fsgjtNewDocumentFromURI(document, uri);		
<b>Parameters:</b>	fsgjt_object_t*	document	Pointer to the new document to be created.
	fsgjt_uri_t	uri	UIR of the document data or NULL if no data file is to be associated with job ticket.
<b>Return Status:</b>	FSGJT_OK FSGJT_INTERNAL_ERROR FSGJT_INVALID_PARAM FSGJT_MISSING_PARAM		
<b>Impact Level:</b>	Object		
<b>Description:</b>	Creates a Document object using the provided URI that contains the document data.		
<b>Constraints, Limitation, Restrictions</b>			
<b>Also See:</b>			
<b>Header:</b>	fsgjt_document.h		

**8.5 fsgjtNewInsertSheet**

<b>Syntax:</b>	fsgjt_return_code_t fsgjtNewInsertSheet(insertSheet, position, pages);		
<b>Parameters:</b>	fsgjt_object_t*	insertSheet	Pointer to the new InsertSheet object to create
	fsgjt_position_t	position	Position of insert sheet (e.g., before)
	fsgjt_object_t*	pages	List of PageRange objects (scope) for the insert sheet operation.
<b>Return Status:</b>	FSGJT_OK FSGJT_INTERNAL_ERROR FSGJT_INVALID_PARAM FSGJT_MISSING_PARAM		
<b>Impact Level:</b>	Object		
<b>Description:</b>	Creates a InsertSheet object having the provided position and page ranges.		
<b>Constraints, Limitation, Restrictions</b>			
<b>Also See:</b>			
<b>Header:</b>	fsgjt_job.h		

**8.6 fsgjtNewJob**

<b>Syntax:</b>	fsgjt_return_code_t fsgjtNewJob(job);	
<b>Parameters:</b>	fsgjt_object_t*	job Pointer to Job object to be created.
<b>Return Status:</b>	FSGJT_OK FSGJT_INTERNAL_ERROR FSGJT_INVALID_PARAM FSGJT_MISSING_PARAM	
<b>Impact Level:</b>	Object	
<b>Description:</b>	Creates a Job object without providing a Document.	
<b>Constraints, Limitation, Restrictions</b>		
<b>Also See:</b>		
<b>Header:</b>	fsgjt_job.h	

**8.7 fsgjtNewJobFromDocument**

<b>Syntax:</b>	fsgjt_return_code_t fsgjtNewJobFromDocument(job, document);		
<b>Parameters:</b>	fsgjt_object_t*	job	Pointer to Job object to be created.
	fsgjt_object_t	document	Document to be contained in this job.
<b>Return Status:</b>	FSGJT_OK FSGJT_INTERNAL_ERROR FSGJT_INVALID_PARAM FSGJT_MISSING_PARAM		
<b>Impact Level:</b>	Object		
<b>Description:</b>	Creates a Job object containing the provided Document.		
<b>Constraints, Limitation, Restrictions</b>			
<b>Also See:</b>			
<b>Header:</b>	fsgjt_job.h		



## 8.8 fsgjtNewJobTicketInfo

<b>Syntax:</b>	fsgjt_return_code_t fsgjtNewJobTicketInfo( jobTicketInfo, typeAndVersion);		
<b>Parameters:</b>	fsgjt_object_t*	jobTicketInfo	Pointer to the new JobTicketInfo to create
	fsgjt_jobt_ticket_type_version_t	typeAndVersion	Type and version of this Job Ticket
<b>Return Status:</b>	FSGJT_OK FSGJT_INTERNAL_ERROR FSGJT_INVALID_PARAM FSGJT_MISSING_PARAM		
<b>Impact Level:</b>	Object		
<b>Description:</b>	Creates a JobTicketInfo object. Used when a new JobTicketInfo is being created without a Job object and not from an external job ticket.		
<b>Constraints, Limitation, Restrictions</b>	Use JobTicketTypeVersionEnum		
<b>Also See:</b>			
<b>Header:</b>	fsgjt_job_ticket_info.h		

## 8.9 fsgjtNewJobTicketInfoFromURI

<b>Syntax:</b>	fsgjt_return_code_t fsgjtNewJobTicketInfoFromURI (jobTicketInfo, uri, typeAndVersion);		
<b>Parameters:</b>	fsgjt_object_t*	jobTicketInfo	Pointer to the new JobTicketInfo to create
	fsgjt_uri_t	uri	URI where job ticket file resides
	fsgjt_job_ticket_type_version_t	typeAndVersion	Type and version of this job ticket.
<b>Return Status:</b>	FSGJT_OK FSGJT_INTERNAL_ERROR FSGJT_INVALID_PARAM FSGJT_MISSING_PARAM		
<b>Impact Level:</b>	Object		
<b>Description:</b>	Creates a JobTicketInfo object from the job ticket file at the provided URI. Other JTAPI objects are also created based on the information in the job ticket file.		
<b>Constraints, Limitation, Restrictions</b>	Use JobTicketTypeVersionEnum		
<b>Also See:</b>			
<b>Header:</b>	fsgjt_job_ticket_info.h		

**8.10 fsgjtNewJobTicketInfoFromBuffer**

<b>Syntax:</b>	fsgjt_return_code_t fsgjtNewJobTicketFromBuffer (jobTicketInfo, buffer, buffersize, typeAndVersion);		
<b>Parameters:</b>	fsgjt_object_t*	jobTicketInfo	Pointer to the new JobTicketInfo to create
	fsgjt_text_t	buffer	Buffer that contains the job ticket
	size_t	bufferSize	Size of the buffer.
	fsgjt_job_ticket_type_version_t	typeAndVersion	Type and version of this job ticket
<b>Return Status:</b>	FSGJT_OK FSGJT_INTERNAL_ERROR FSGJT_INVALID_PARAM FSGJT_MISSING_PARAM		
<b>Impact Level:</b>	Object		
<b>Description:</b>	Creates a JobTicketInfo object from the provided buffer that contains a job ticket. Other JTAPI objects are also created based on the information in the job ticket buffer.		
<b>Constraints, Limitation, Restrictions</b>	For charset use the tag from the IANA Charset Registry. Use JobTicketTypeVersionEnum		
<b>Also See:</b>			
<b>Header:</b>	fsgjt_job_ticket_info.h		

**8.11 fsgjtNewJobTicketInfoFromJob**

<b>Syntax:</b>	fsgjt_return_code_t fsgjtNewJobTicketInfoFromJob  (jobTicketInfo, job, typeAndVersion);		
<b>Parameters:</b>	fsgjt_object_t*	jobTicketInfo	Pointer to the new JobTicketInfo to create
	fsgjt_object_t	job	Job object that this JobTicketInfo is to contain
	fsgjt_job_ticket_type_version_t	typeAndVersion	Type and version of this job ticket
<b>Return Status:</b>	FSGJT_OK FSGJT_INTERNAL_ERROR FSGJT_INVALID_PARAM FSGJT_MISSING_PARAM		
<b>Impact Level:</b>	Object		
<b>Description:</b>	Creates a JobTicketInfo object using the provided Job object. Used when new job ticket is being created. The Job object must be created first.		
<b>Constraints, Limitation, Restrictions</b>	Use JobTicketTypeVersionEnum		
<b>Also See:</b>			
<b>Header:</b>	fsgjt_job_ticket_info.h		

## 8.12 fsgjtWriteJobTicketInfoToBuffer

<b>Syntax:</b>	fsgjt_return_code_t fsgjtWriteJobTicketInfoToBuffer (jobTicketInfo, buffer, buffersize);		
<b>Parameters:</b>	fsgjt_object_t	jobTicketInfo	JobTicketInfo from which the job ticket is to be written
	fsgjt_text_t	buffer	Buffer to write the job ticket to. The buffer must be created by the caller.
	size_t	bufferSize	Size of buffer that caller created.
<b>Return Status:</b>	FSGJT_OK FSGJT_INTERNAL_ERROR FSGJT_INVALID_PARAM FSGJT_MISSING_PARAM		
<b>Impact Level:</b>	Object		
<b>Description:</b>	Writes a job ticket to the provided buffer.		
<b>Constraints, Limitation, Restrictions</b>			
<b>Also See:</b>			
<b>Header:</b>	fsgjt_job_ticket_info.h		

**8.13 fsgjtWriteJobTicketInfoToURI**

<b>Syntax:</b>	fsgjt_return_code_t fsgjtWriteJobTicketInfoToURI(jobTicketInfo, uri);		
<b>Parameters:</b>	fsgjt_object_t	jobTicketInfo	JobTicketInfo from which the job ticket is to be written
	fsgjt_uri_t	uri	URI of the job ticket that is to be created from the JobTicketInfo.
<b>Return Status:</b>	FSGJT_OK FSGJT_INTERNAL_ERROR FSGJT_INVALID_PARAM FSGJT_MISSING_PARAM		
<b>Impact Level:</b>	Object		
<b>Description:</b>	Write a job ticket at the provided URI.		
<b>Constraints, Limitation, Restrictions</b>			
<b>Also See:</b>			
<b>Header:</b>	fsgjt_job_ticket_info.h		

**8.14 fsgjtNewFolding**

<b>Syntax:</b>	fsgjt_return_code_t fsgjtNewFolding (folding, foldingType);		
<b>Parameters:</b>	fsgjt_object_t*	folding	Pointer to the new Folding object to create
	fsgjt_folding_type_t	foldingType	Type of folding to be performed.
<b>Return Status:</b>	FSGJT_OK FSGJT_INTERNAL_ERROR FSGJT_INVALID_PARAM FSGJT_MISSING_PARAM		
<b>Impact Level:</b>	Object		
<b>Description:</b>	Creates a Folding object having the provided folding type.		
<b>Constraints, Limitation, Restrictions</b>			
<b>Also See:</b>			
<b>Header:</b>	fsgjt_folding.h		

**8.15 fsgjtNewForcePage**

<b>Syntax:</b>	fsgjt_return_code_t fsgjtNewForce(forcePage, page, sheetSide);		
<b>Parameters:</b>	fsgjt_object_t*	forcePage	Pointer to the new ForcePage object to create
	fsgjt_int32_t	page	Page number where the force page is to occur.
	fsgjt_sheet_side_t	sheetSide	Sheet side to force at the provided page number.
<b>Return Status:</b>	FSGJT_OK FSGJT_INTERNAL_ERROR FSGJT_INVALID_PARAM FSGJT_MISSING_PARAM		
<b>Impact Level:</b>	Object		
<b>Description:</b>	Creates a ForcePage object having the provided page and sheet side.		
<b>Constraints, Limitation, Restrictions</b>			
<b>Also See:</b>			
<b>Header:</b>	fsgjt_force_page.h		



**8.16 fsgjtNewHoleMaking**

<b>Syntax:</b>	fsgjt_return_code_t fsgjtNewHoleMaking  (holeMaking, holeCount);		
<b>Parameters:</b>	fsgjt_object_t*	holeMaking	Pointer to the new HoleMaking object to create
	fsgjt_int32_t	holeCount	Count of the holes to make (punch, drill, etc.) for this HoleMaking object.
<b>Return Status:</b>	FSGJT_OK FSGJT_INTERNAL_ERROR FSGJT_INVALID_PARAM FSGJT_MISSING_PARAM		
<b>Impact Level:</b>	Object		
<b>Description:</b>	Creates a HoleMaking object having the provided hole count.		
<b>Constraints, Limitation, Restrictions</b>			
<b>Also See:</b>			
<b>Header:</b>	fsgjt_hole_making.h		

**8.17 fsgjtNewMedia**

<b>Syntax:</b>	fsgjt_return_code_t fsgjtNewMedia (media, name);		
<b>Parameters:</b>	fsgjt_object_t*	media	Pointer to the new Media to create
	fsgjt_test_t	name	Name of the media or NULL if Media name is not being specified. The name can be any string
<b>Return Status:</b>	FSGJT_OK FSGJT_INTERNAL_ERROR FSGJT_INVALID_PARAM FSGJT_MISSING_PARAM		
<b>Impact Level:</b>	Object		
<b>Description:</b>	Creates a Media object using the provided name.		
<b>Constraints, Limitation, Restrictions</b>			
<b>Also See:</b>			
<b>Header:</b>	fsgjt_media.h		

**8.18 fsgjtNewPageRange**

<b>Syntax:</b>	fsgjt_return_code_t fsgjtNewPageRange(pageRange, lower, upper);		
<b>Parameters:</b>	fsgjt_object_t*	pageRange	Pointer to the new PageRange object to create.
	fsgjt_int32_t	lower	Page number where the page range is to begin (inclusive).
	fsgjt_int32_t	upper	Page number where the page range is to end (inclusive).
<b>Return Status:</b>	FSGJT_OK FSGJT_INTERNAL_ERROR FSGJT_INVALID_PARAM FSGJT_MISSING_PARAM		
<b>Impact Level:</b>	Object		
<b>Description:</b>	Creates a PageRange object having the provided lower and upper bounds.		
<b>Constraints, Limitation, Restrictions</b>			
<b>Also See:</b>			
<b>Header:</b>	fsgjt_page_range.h		

**8.19 fsgjtNewSeparatorSheet**

<b>Syntax:</b>	fsgjt_return_code_t fsgjtNewSeparatorSheet  (separatorSheet, separatorSheetType);		
<b>Parameters:</b>	fsgjt_object_t*	separatorSheet	Pointer to the new SeparatorSheet object to create.
	fsgjt- _separator_sheet_type_t	separatorSheetType	Type of separator sheet (e.g., blank)
<b>Return Status:</b>	FSGJT_OK FSGJT_INTERNAL_ERROR FSGJT_INVALID_PARAM FSGJT_MISSING_PARAM		
<b>Impact Level:</b>	Object		
<b>Description:</b>	Creates a Separator Sheet object having the provided type and media.		
<b>Constraints, Limitation, Restrictions</b>			
<b>Also See:</b>			
<b>Header:</b>	fsgjt_separator_sheet.h		

**8.20 fsgjtNewStitching**

<b>Syntax:</b>	fsgjt_return_code_t fsgjtNewStitching(stitching, stitchingType);		
<b>Parameters:</b>	fsgjt_object_t*	stitching	Pointer to the new Stitching object to create.
	fsgjt_stitching_type_t	stitchingType	Type (edge, corner, etc.) for this Stitching object.
<b>Return Status:</b>	FSGJT_OK FSGJT_INTERNAL_ERROR FSGJT_INVALID_PARAM FSGJT_MISSING_PARAM		
<b>Impact Level:</b>	Object		
<b>Description:</b>	Creates a Stitching object having the provided stitching count, reference edge and type.		
<b>Constraints, Limitation, Restrictions</b>			
<b>Also See:</b>			
<b>Header:</b>	fsgjt_stitching.h		

## 8.21 fsgjtNewSubscription

<b>Syntax:</b>	fsgjt_return_code_t fsgjtNewSubscription(subscription, sendToUri);		
<b>Parameters:</b>	fsgjt_object_t*	subscription	Pointer to the new Subscription object to create.
	fsgjt_uri_t	sendToUri	URI for delivery of notification for this Subscription.
<b>Return Status:</b>	FSGJT_OK FSGJT_INTERNAL_ERROR FSGJT_INVALID_PARAM FSGJT_MISSING_PARAM		
<b>Impact Level:</b>	Object		
<b>Description:</b>	Creates a Subscription object having the provided notification URI.		
<b>Constraints, Limitation, Restrictions</b>			
<b>Also See:</b>			
<b>Header:</b>	fsgjt_subscription.h		

## 9. Object Level Application Programming Interfaces Conformance Summary

Based on the characteristics, resource limitations and print capabilities of the separate print environments the level of support for individual JTAPI objects is outlined below. The print environment type and the specific conformance version will be identified as part of the JTAPI initialization process.

### *JTAPI Object Conformance for Print Environments*

<i>Object</i>	<i>Conformance – 1.0 Release (Must, May)</i>			
	<i>Embedded/Mobile</i>	<i>Desktop/Home</i>	<i>Office/Network</i>	<i>Production</i>
<b>ContactInfo</b>	May	May	May	<b>Must</b>
<b>Destination</b>	May	May	May	<b>Must</b>
<b>Document</b>	<b>Must</b>	<b>Must</b>	<b>Must</b>	<b>Must</b>
<b>Folding</b>	May	May	May	<b>Must</b>
<b>ForcePage</b>	May	May	May	<b>Must</b>
<b>HoleMaking</b>	May	May	May	<b>Must</b>
<b>InsertSheet</b>	May	May	May	<b>Must</b>
<b>Job</b>	<b>Must</b>	<b>Must</b>	<b>Must</b>	<b>Must</b>
<b>JobDocument Page</b>	<b>Must</b>	<b>Must</b>	<b>Must</b>	<b>Must</b>
<b>JobTicketInfo</b>	<b>Must</b>	<b>Must</b>	<b>Must</b>	<b>Must</b>
<b>Media</b>	<b>Must</b>	<b>Must</b>	<b>Must</b>	<b>Must</b>
<b>PageRange</b>	May	<b>Must</b>	<b>Must</b>	<b>Must</b>
<b>SeparatorSheet</b>	May	May	May	<b>Must</b>
<b>Stitching</b>	May	May	May	<b>Must</b>
<b>Subscription</b>	May	May	May	<b>Must</b>

## 10. ContactInfo

A ContactInfo object contains information about a person who is to be contacted regarding the job. A ContactInfo object contains attributes that specify the name, address, company, URIs, and role of the person who is to be contacted. The role of the person identifies why the person is interested in the job. Some typical roles are Administrator, Customer, Delivery, and Approver.

### 10.1 ContactInfo Attributes & Conformance

<i>Attribute</i>	<i>E/M</i>	<i>D/H</i>	<i>O/N</i>	<i>Prod</i>
<b>ContactInfo</b>	May	May	May	<b>Must</b>
contact-info-address	May	May	May	<b>Must</b>
contact-info-company	May	May	May	<b>Must</b>
contact-info-contact-uri	May	May	May	<b>Must</b> <Mail-To Scheme, Telephone Scheme>
contact-info-details	May	May	May	May
contact-info-name	<b>Must</b>	<b>Must</b>	<b>Must</b>	<b>Must</b>
contact-info-roles	<b>Must</b> {SENDER}	<b>Must</b> {SENDER}	<b>Must</b> {SENDER}	<b>Must</b> {SENDER, CUSTOMER, DELIVERY, PICKUP, ACCOUNTING }

Not-Set is required for all attribute implemented. “{-}” indicates values to be supported.



## 11. Destination

A Destination object contains information about the target URI. A Destination object contains an attribute that specifies the target URI.

### 11.1 Destination Attributes & Conformance

<i>Attribute</i>	<i>E/M</i>	<i>D/H</i>	<i>O/N</i>	<i>Prod</i>
<b>Destination</b>	May	May	May	<b>Must</b>
destination-target-uri	May	May	May	<b>Must</b>

Not-Set is required for all attribute implemented. “{-}” indicates values to be supported

## 12. Document

Each Document object in a job references one or more files to be processed. A Document object contains attributes that describe the document and how it is to be processed.

Only one file per Document object is required to be supported.

### 12.1 Document Attributes & Conformance

<i>Attribute</i>	<i>E/M</i>	<i>D/H</i>	<i>O/N</i>	<i>Prod</i>
<b>Document</b>	<b>Must</b>	<b>Must</b>	<b>Must</b>	<b>Must</b>
document-data-uri	<b>Must</b>	<b>Must</b>	<b>Must</b>	<b>Must</b>

Not-Set is required for all attribute implemented. “{-}” indicates values to be supported.

### 13. Folding

A Folding object contains information that specifies how a job, document, or range of pages in a job or document is to be folded. A Folding object contains attributes that specify the type of folding (such as, z-fold and saddle fold) and the reference edge from which to perform the folding operation.

#### 13.1 Folding Attributes & Conformance

<i>Attribute</i>	<i>E/M</i>	<i>D/H</i>	<i>O/N</i>	<i>Prod</i>
<b>Folding</b>	May	May	May	<b>Must</b>
folding-reference-edge	May	May	May	May
folding-type	May	May	May	<b>Must</b> {SADDLE}

Not-Set is required for all attribute implemented. “{-}” indicates values to be supported.

## 14. ForcePage

A ForcePage object is used to specify that a single page, identified by an input page number, is imaged on a specific side (front or back) and/or specific cell of the sheet. Forcing a page is typically performed when the first page of each chapter is to be imaged on the front side of a sheet, also known as "chapter starts". A ForcePage object can also be used to only image on the back side of a back cover. ForcePage is only valid when two-sided printing is specified.

ForcePage will force a page to be imaged on the specified side even if the page would normally fall on the other side. For example, if the second page would normally be imaged on the back side of the sheet and it is to be forced to the front side, then the back side of the current sheet is left blank and the second page is imaged on the next sheet.

### 14.1 ForcePage Attributes & Conformance

<i>Attribute</i>	<i>E/M</i>	<i>D/H</i>	<i>O/N</i>	<i>Prod</i>
<b>ForcePage</b>	May	May	May	<b>Must</b>
force-page-cell-position-x	May	May	May	<b>Must</b>
force-page-cell-position-y	May	May	May	<b>Must</b>
force-page-page	May	May	May	<b>Must</b>
force-page-sheet-side	May	May	May	<b>Must</b>

Not-Set is required for all attribute implemented. "{-}" indicates values to be supported.

## 15. HoleMaking

A HoleMaking object specifies how a job, document, or range of pages in a job or document is to be punched or drilled. A HoleMaking object contains attributes that specify the number of holes to punch and the edge of the sheet to punch.

### 15.1 HoleMaking Attributes & Conformance

<i>Attribute</i>	<i>E/M</i>	<i>D/H</i>	<i>O/N</i>	<i>Prod</i>
<b>HoleMaking</b>	May	May	May	<b>Must</b>
hole-making-count	May	May	May	May
hole-making-reference-edge	May	May	May	<b>Must</b> {LEFT, RIGHT}

Not-Set is required for all attribute implemented. “{-}” indicates values to be supported.

## 16. InsertSheet

An InsertSheet object specifies information that describes an insert sheet that is to be inserted in the job or document. An insert sheet will not be imaged/printed with content from the document data stream.

An InsertSheet object contains attributes that specify where the insert sheet is to be placed in the job or a document (before or after specific page numbers), the media that is to be used for the insert sheet, the number of insert sheets to insert, and other insert sheet information.

### 16.1 InsertSheet Attributes & Conformance

<i>Attribute</i>	<i>E/M</i>	<i>D/H</i>	<i>O/N</i>	<i>Prod</i>
<b>InsertSheet</b>	May	May	May	<b>Must</b>
insert-sheet-content	May	May	May	<b>Must</b>
insert-sheet-count	May	May	May	May
insert-sheet-media	May	May	May	<b>Must</b>
insert-sheet-pages	<b>Must</b>	<b>Must</b>	<b>Must</b>	<b>Must</b>
insert-sheet-position	<b>Must</b>	<b>Must</b>	<b>Must</b>	<b>Must</b>

Not-Set is required for all attribute implemented. “{-}” indicates values to be supported.

## 17. Job

A Job object specifies a description of a job and how it is to be processed. A Job object contains attributes that specify job-name (description) and job-copies (processing).

### 17.1 Job Attributes & Conformance

<i>Attribute</i>	<i>E/M</i>	<i>D/H</i>	<i>O/N</i>	<i>Prod</i>
<b>Job</b>	<b>Must</b>	<b>Must</b>	<b>Must</b>	<b>Must</b>
job-billing-code	May	May	May	<b>Must</b>
job-binding	May	May	May	<b>Must</b>
job-client-id	May	May	<b>Must</b>	<b>Must</b>
job-collate	May	<b>Must</b>	<b>Must</b>	<b>Must</b>
job-comment	May	May	<b>Must</b>	<b>Must</b>
job-compression	<b>Must</b> {NONE}	<b>Must</b> {NONE}	<b>Must</b> {NONE}	<b>Must</b> {NONE}
job-contact-info	May	May	May	<b>Must</b>
job-copies	May	May	<b>Must</b>	<b>Must</b>
job-create-user-name	<b>Must</b>	<b>Must</b>	<b>Must</b>	<b>Must</b>
job-destinations	<b>Must</b> {Single-Valued}	<b>Must</b> {Single - Valued}	<b>Must</b> {Single-Valued}	<b>Must</b> {Single-Valued}
job-document-format	<b>Must</b> {application/octet-stream}	<b>Must</b> {application/octet-stream}	<b>Must</b> {application/octet-stream}	<b>Must</b> {application/octet-stream}
job-document-natural-language	May	<b>Must</b>	<b>Must</b>	<b>Must</b>
job-documents	<b>Must</b>	<b>Must</b>	<b>Must</b>	<b>Must</b>
job-feed-orientation	May	May	May	<b>Must</b>
job-fit-policy	<b>Must</b> {FIT_TO_PAGE}	<b>Must</b> {FIT_TO_PAGE}	<b>Must</b> {FIT_TO_PAGE}	<b>Must</b> {FIT_TO_PAGE}
job-folding	May	May	May	<b>Must</b>
job-force-pages	May	May	May	<b>Must</b>
job-hold	May	May	May	<b>Must</b>
job-hole-making	May	May	May	<b>Must</b>
job-image-alignment-x	May	May	May	<b>Must</b>
job-image-alignment-y	May	May	May	<b>Must</b>
job-image-shift-back-x	May	May	May	<b>Must</b>

<i>Attribute</i>	<i>E/M</i>	<i>D/H</i>	<i>O/N</i>	<i>Prod</i>
job-image-shift-back-y	May	May	May	<b>Must</b>
job-image-shift-front-x	May	May	May	<b>Must</b>
job-image-shift-front-y	May	May	May	<b>Must</b>
job-include-pages	May	May	May	<b>Must</b>
job-insert-sheets	May	May	May	<b>Must</b>
job-jog-offset	May	May	May	<b>Must</b>
job-margin-bottom	<b>Must</b>	<b>Must</b>	<b>Must</b>	<b>Must</b>
job-margin-left	<b>Must</b>	<b>Must</b>	<b>Must</b>	<b>Must</b>
job-margin-right	<b>Must</b>	<b>Must</b>	<b>Must</b>	<b>Must</b>
job-margin-top	<b>Must</b>	<b>Must</b>	<b>Must</b>	<b>Must</b>
job-media	<b>Must</b>	<b>Must</b>	<b>Must</b>	<b>Must</b>
job-message-to-operator	May	May	May	<b>Must</b>
job-name	May	May	<b>Must</b>	<b>Must</b>
job-number-up-x	May	<b>Must</b>	<b>Must</b>	<b>Must</b>
job-number-up-y	May	<b>Must</b>	<b>Must</b>	<b>Must</b>
job-output-bin-name	May	<b>Must</b>	<b>Must</b>	<b>Must</b>
job-output-pages	<b>Must</b>	<b>Must</b>	<b>Must</b>	<b>Must</b>
job-page-delivery	May	May	May	<b>Must</b>
job-presentation-direction	May	May	May	<b>Must</b>
job-print-quality	<b>Must</b>	<b>Must</b>	<b>Must</b>	<b>Must</b>
job-priority	<b>Must</b>	<b>Must</b>	<b>Must</b>	<b>Must</b>
job-resolution-x	<b>Must</b>	<b>Must</b>	<b>Must</b>	<b>Must</b>
job-resolution-y	<b>Must</b>	<b>Must</b>	<b>Must</b>	<b>Must</b>
job-rotation	May	<b>Must</b>	<b>Must</b>	<b>Must</b>
job-scaling-factor-x	<b>Must</b>	<b>Must</b>	<b>Must</b>	<b>Must</b>
job-scaling-factor-y	May	May	May	<b>Must</b>
job-separator-sheets	May	May	<b>Must</b>	<b>Must</b>
job-sides	May	<b>Must</b>	<b>Must</b>	<b>Must</b>
job-stitching	May	May	<b>Must</b> {(CORNER, TOP-LEFT)}	<b>Must</b>
job-subscriptions	May	May	May	<b>Must</b>

Not-Set is required for all attribute implemented. “{-}” indicates values to be supported.



## 18. JobDocumentPage

JobDocumentPage is an abstract object that contains attributes that can be specified for the Job or Document objects. For example, one media can be specified for the entire job, which can be overridden by another media for a specific document in the job, which can be overridden by another media for specific pages in the job or document.

### 18.1 JobDocumentPage Attributes & Conformance

<i>Attribute</i>	<i>E/M</i>	<i>D/H</i>	<i>O/N</i>	<i>Prod</i>
<i>JobDocument Page</i>	<b>Must</b>	<b>Must</b>	<b>Must</b>	<b>Must</b>

Not-Set is required for all attribute implemented. “{-}” indicates values to be supported.

## 19. JobTicketInfo

A JobTicketInfo object specifies job ticket information, such as a comment describing the job ticket, the version of the JTAPI, the type or syntax (JDF, PWG, etc.) of job ticket, and other job ticket information. A JobTicketInfo object does not contain job processing information.

### 19.1 JobTicketInfo Attributes & Conformance

<i>Attribute</i>	<i>E/M</i>	<i>D/H</i>	<i>O/N</i>	<i>Prod</i>
<b><i>JobTicketInfo</i></b>	<b>Must</b>	<b>Must</b>	<b>Must</b>	<b>Must</b>
jt-api-charset	<b>Must</b> {“UTF8”}	<b>Must</b> {“UTF8”}	<b>Must</b> {“UTF8”}	<b>Must</b> {“UTF8”}
jt-api-version	<b>Must</b>	<b>Must</b>	<b>Must</b>	<b>Must</b>
jt-author-name	May	May	<b>Must</b>	<b>Must</b>
jt-charset	<b>Must</b>	<b>Must</b>	<b>Must</b>	<b>Must</b>
jt-comment	May	<b>Must</b>	<b>Must</b>	<b>Must</b>
jt-fidelity	<b>Must</b>	<b>Must</b>	<b>Must</b>	<b>Must</b>
jt-job	<b>Must</b>	<b>Must</b>	<b>Must</b>	<b>Must</b>
jt-length-units	<b>Must</b> {MICRO}	<b>Must</b> {MICRO}	<b>Must</b> {MICRO}	<b>Must</b> {MICRO}
jt-type-and-version	<b>Must</b>	<b>Must</b>	<b>Must</b>	<b>Must</b>
jt-version	May	May	May	<b>Must</b>

Not-Set is required for all attribute implemented. “{-}” indicates values to be supported.

## 20. Media

A Media object specifies a media that is to be used when printing the job, document, or a range of pages in the job or document. A Media object contains attributes that specify a name that describes the media dimensions (for example, na\_letter\_8.5x11in), the color of the media, the actual media dimensions, and other media information.

### 20.1 Media Attributes & Conformance

<i>Attribute</i>	<i>E/M</i>	<i>D/H</i>	<i>O/N</i>	<i>Prod</i>
<b>Media</b>	<b>Must</b>	<b>Must</b>	<b>Must</b>	<b>Must</b>
media-back-coating	May	May	May	<b>Must</b>
media-color	May	May	<b>Must</b>	<b>Must</b>
media-color-name	May	May	<b>Must</b>	<b>Must</b>
media-description	May	May	May	<b>Must</b>
media-front-coating	<b>Must</b>	<b>Must</b>	<b>Must</b>	<b>Must</b>
media-hole-count	May	May	May	<b>Must</b>
media-input-tray-name	May	May	<b>Must</b>	<b>Must</b>
media-manual-feed	<b>Must</b>	<b>Must</b>	<b>Must</b>	<b>Must</b>
media-name	May	May	May	<b>Must</b>
media-preprinted	May	May	May	<b>Must</b>
media-recycled-percentage	May	May	May	<b>Must</b>
media-set-count	May	May	May	<b>Must</b>
media-size-name	<b>Must</b>	<b>Must</b>	<b>Must</b>	<b>Must</b>
media-type	<b>Must</b>	<b>Must</b>	<b>Must</b>	<b>Must</b>
media-weight	May	May	May	<b>Must</b>

Not-Set is required for all attribute implemented. “{-}” indicates values to be supported.

## 21. Page Range

A Page Range object specifies the range of page that .

### 21.1 Page Range Attributes & Conformance

<i>Attribute</i>	<i>E/M</i>	<i>D/H</i>	<i>O/N</i>	<i>Prod</i>
<i>PageRange</i>	<b>May</b>	<b>MUST</b>	<b>MUST</b>	<b>MUST</b>
page-range-lower	<b>May</b>	<b>MUST</b>	<b>MUST</b>	<b>MUST</b>
page-range-upper	<b>May</b>	<b>MUST</b>	<b>MUST</b>	<b>MUST</b>

Not-Set is required for all attribute implemented. “{-}” indicates values to be supported.

## 22. SeparatorSheet

A SeparatorSheet object specifies information that describes separator sheets. A separator sheet will not be imaged and/or printed with content from the document data stream.

A SeparatorSheet object contains attributes that specify where the separator sheets are to be placed (before or after the job or document, between copies, etc.), the media that is to be used for the separator sheet, and a message that is to be imaged/printed on the separator sheet.

### 22.1 SeparatorSheet Attributes & Conformance

<i>Attribute</i>	<i>E/M</i>	<i>D/H</i>	<i>O/N</i>	<i>Prod</i>
<i>SeparatorSheet</i>	May	May	May	<b>Must</b>
separator-sheet-media	May	May	May	<b>Must</b>
separator-sheet-message	May	May	May	<b>Must</b>
separator-sheet-type	<b>Must</b> {BEFORE_JOB}	<b>Must</b> {BEFORE_JOB}	<b>Must</b> {BEFORE_JOB}	<b>Must</b>

Not-Set is required for all attribute implemented. “{-}” indicates values to be supported.

## 23. Stitching

A Stitching object specifies how a job, document, or range of pages in a job or document is to be stapled and/or stitched. A Stitching object contains attributes that specify the number of stitches, the type of stitch (for example, corner, edge, or saddle), the edge of the sheet to stitch, and other stitching information.

### 23.1 Stitching Attributes & Conformance

<i>Attribute</i>	<i>E/M</i>	<i>D/H</i>	<i>O/N</i>	<i>Prod</i>
<b>Stitching</b>	May	May	May	<b>Must</b>
stitching-angle	May {0, 45, 90, 135}	May {0, 45, 90, 135}	May {0, 45, 90, 135}	<b>Must</b> {0, 45, 90, 135}
stitching-count	May	May	May	<b>Must</b> {1, 2}
stitching-reference-edge	May	May	May	<b>Must</b> {LEFT, RIGHT}
stitching-type	<b>Must</b> {CORNER, NONE}	<b>Must</b> {CORNER, NONE}	<b>Must</b> {CORNER, NONE}	<b>Must</b>

Not-Set is required for all attribute implemented. “{-}” indicates values to be supported.

## 24. Subscription

A Subscription object specifies subscription for notification of events that are to be sent to a specific destination. A Subscription object contains attributes that specify the events to be sent, the character set, the language, the comment text to be included in the notification, delivery method (for example, email), and other subscription information.

### 24.1 Subscription Attributes & Conformance

<i>Attribute</i>	<i>E/M</i>	<i>D/H</i>	<i>O/N</i>	<i>Prod</i>
<b>Subscription</b>	May	May	May	<b>Must</b>
subscription-charset	<b>Must</b> {UTF-8}	<b>Must</b> {UTF-8}	<b>Must</b> {UTF-8}	<b>Must</b> {UTF-8}
subscription-comment	May	May	May	<b>Must</b>
subscription-events	<b>Must</b> {JOB_CONFIG_ CHANGED, JOB_STATE_CH ANGED}	<b>Must</b> {JOB_CONFIG_ CHANGED, JOB_STATE_CH ANGED}	<b>Must</b> {JOB_CONFIG_ CHANGED, JOB_STATE_CH ANGED}	<b>Must</b> {JOB_CONFIG_ CHANGED, JOB_STATE_CH ANGED}
subscription-job-attributes	May	May	May	May
subscription-natural-language	May	May	May	May
subscription-send-to-uri	<b>Must</b> {SMNP:}	<b>Must</b> {SMNP:}	<b>Must</b> {SMNP: , MailTool:}	<b>Must</b> {SMNP: , MailTool:}

Not-Set is required for all attribute implemented. “{-}“ indicates values to be supported.

**APPENDIX: A - Normative References**

[ISO639] multi-part International Standard, presently consisting of [ISO639-1] and [ISO639-2].

[ISO639-1] Codes for the Representation of Names of Languages -- Part 1: Alpha-2 Code, ISO/IEC 639-1, 2000.

[ISO639-2] Codes for the Representation of Names of Languages -- Part 2: Alpha-3 Code, ISO/IEC 639-2, 1998.

[ISO3166] multi-part International Standard, presently consisting of [ISO3166-1] and [ISO3166-2].

[ISO3166-1] Codes for the Representation of Names of Countries and their Subdivisions, Part 1: Country Codes, ISO/IEC 3166-1, 1997.

[ISO3166-2] Codes for the Representation of Names of Countries and their Subdivisions, Part 2: Country Subdivision Codes, ISO/IEC 3166-2, 1998.

[ISO10646] multi-part International Standard, presently consisting of [ISO10646-1] and [ISO10646-2].

[ISO10646-1] Information Technology - Universal Multiple-Octet Code Character Set (UCS) - Part 1: Architecture and Basic Multilingual Plane, ISO/IEC 10646-1, September 2000.

[ISO10646-2] Information Technology - Universal Multiple-Octet Code Character Set (UCS) - Part 2: Supplemental Planes, ISO/IEC 10646-2, January 2001.

[RFC2119] Bradner. Key words for use in RFCs to Indicate Requirement Levels, RFC 2119, March 1997.

[RFC2396] Berners-Lee, Fielding, Masinter. URI Generic Syntax, RFC 2396, August 1998.

[RFC2910] Herriot, R., Butler, S., Moore, P., Turner, R., "Internet Printing Protocol/1.1: Encoding and Transport", RFC 2910, September 2000.

[RFC2911] R. deBry, T. Hastings, R. Herriot, S. Isaacson, P. Powell, "Internet Printing Protocol/1.10: Model and Semantics", RFC 2911, September 2000.

[RFC2978] Freed, Postel. IANA Charset Registration Procedures, RFC 2978, October 2000.

[RFC3066] Alvestrand. Tags for the Identification of Languages, RFC 3066, January 2001.



**APPENDIX: B - Informative References**

[cip4] The International Cooperation for the Integration of Processes in Prepress, Press and Postpress (CIP4) located at <http://www.cip4.org/>

[jdf] The Job Definition Format (JDF), version 1.1, August 2002. Set the Document tab at: <http://www.cip4.org>

[pwg] The Printer Working Group located at <http://www.pwg.org/>

[pwg-sm] Zehler, P., Hastings, T., and Albright, S., Printer Working Group (PWG): Semantic Model, work in progress at <ftp://ftp.pwg.org/pub/Semantic-Model/>

[IANA-CHAR] IANA Registry of Character Sets [ftp://ftp.iana.org/assignments/charset-reg/...](ftp://ftp.iana.org/assignments/charset-reg/)

[IANA-MIME] IANA Registry of MIME Media Types [ftp://ftp.iana.org/assignments/media-types/...](ftp://ftp.iana.org/assignments/media-types/)

[RFC2277] Alvestrand. IETF Policy on Character Sets and Languages, RFC 2277, January 1998.

[RFC2279] Yergeau. UTF-8, a Transformation Format of ISO 10646, RFC 2279, January 1998.

## APPENDIX: C - Terminology and Acronyms

### Conformance Terminology

In this document, the uppercase terms “MUST”, “MUST NOT” and “MAY” are intended to be interpreted as described in [RFC2119]

In this document, each conformance statement uses one of the terms:

*Table 1 Conformance Statement Terms*

<i>Term</i>	<i>Meaning</i>
<b>MUST</b>	Implementation support is required for conformance to this specification.
<b>MAY</b>	Implementation support is optional for conformance to this specification.

In this document, the term “support” is defined as:

*Table 2 Conformance Support Terms*

<i>Term</i>	<i>Meaning</i>
<b>“support an operation”</b>	An implementation MUST accept a syntactically correct instance of the operation (includes all required parameters) and MUST return one of the defined results for the invoked operation.
<b>“support an object”</b>	An implementation MUST accept a syntactically correct instance of the object (includes all required attributes), MUST locally instantiate the object and MUST return one of the defined results for the invoked operation.
<b>“support an attribute”</b>	An implementation MUST accept a syntactically correct instance of the attribute (includes a valid value) and MUST locally instantiate the attribute. Further, an implementation MUST accept at least one value (other than the empty value NOT_SET) defined for the given attribute.
<b>Element</b>	Object operation or attribute.

## Other Terminology

*Table 3 Miscellaneous Terms*

<i>Term</i>	<i>Meaning</i>
<b>Job Ticket</b>	A set of one or more job processing activities (e.g. stapling, binding, number of copies, insert sheet), contained within a file or stream, serialized into some file format (for example, the XML instance textual encoding of a CIP4 JDF Job Ticket).
<b>Job</b>	A set of one or more processing activities, contained within a “Job Ticket”, described by “Job Description” attributes, and processed according to “Job Processing” attributes.
<b>Document</b>	A single document to be processed, contained within a “Job”, described by “Document Description” attributes, and processed according to “Document Processing” attributes.
<b>Document Processing</b>	
<b>Page</b>	A single logical page in a source document. Multiple source pages may be included in a single “Impression” on a “Side” of a “Sheet”.
<b>Sheet</b>	A single physical piece of media.
<b>Side</b>	A single side (front or back) of “Sheet” of media.
<b>Impression</b>	A single image marked (by some means) on a “Side” of a “Sheet”.

## Acronyms

*Table 4 Acronyms*

<i>Acronyms</i>	<i>Meaning</i>	<i>Source</i>
<b>CIP4</b>	International Cooperation for the Integration of Processes in Prepress, Press and Postpress	<a href="http://www.cip4.org/">http://www.cip4.org/</a>
<b>JDF</b>	Job Definition Format	Version 1.1, August 2002. See documentation tab at <a href="http://www.cip4.org/">http://www.cip4.org/</a>
<b>PWG</b>	Printer Working Group	<a href="http://www.pwg.org/">http://www.pwg.org/</a>

<i>Acronyms</i>	<i>Meaning</i>	<i>Source</i>
<b>FSG</b>	Free Standards Group	<a href="http://www.freestandards.org">http://www.freestandards.org</a>
<b>FSG/OP</b>	Free Standards Group – Open Printing	<a href="http://www.openprinting.org/">http://www.openprinting.org/</a>
<b>JTAPI</b>	<b>J</b> ob <b>T</b> icket <b>A</b> pplication <b>P</b> rogramming <b>I</b> nterface	

## Editors

Glen Petrie [[glen.petrie@eitc.epson.com](mailto:glen.petrie@eitc.epson.com)] - EPSON

## Authors

Claudia Alimpich [[alimpich@us.ibm.com](mailto:alimpich@us.ibm.com)] - International Business Machines

Till Kampeter [[till.kampeter@gmx.net](mailto:till.kampeter@gmx.net)] - MandrakeSoft

Ira McDonald [[imcdonald@sharpplabs.com](mailto:imcdonald@sharpplabs.com)] - High North

Glen Petrie [[glen.petrie@eitc.epson.com](mailto:glen.petrie@eitc.epson.com)] - EPSON

## Contributors

Tom Hastings [[hastings@cp10.es.xerox.com](mailto:hastings@cp10.es.xerox.com)] - Xerox

**Changes**

<i>Date</i>	<i>Affected Version</i>	<i>Author</i>	<i>Change</i>
08.12.03	0.30	G. Petrie	Added comments from T. Hastings in the introduction and reference sections.
08.12.03	0.30	G. Petrie	Added comments from I. McDonald in the reference section. Added comments and changes based on discussion from 08.12.03 weekly job-ticket meeting. Many section affected.
08.15.03	0.40	G. Petrie	Added comments and changes based on discussion from 08.12.03 weekly job-ticket meeting. Many section affected.
08.19.03	0.50	G. Petrie	Updated minor change to headings.
08.26.03	0.50 Claudia	G. Petrie	Added Sections 4.0, 4.1 and 4.2 from Claudia's version of 0.50, dated 08.19.03
08.28.03	0.55	G. Petrie	Edits and changes based on 08.28.03 weekly job-ticket meeting for Section 4.0, 4.1, 4.2. The addition table/figure labels and a table/figure table-of-content
10/15/03	0.77	G. Petrie	Updates to attribute compliance table based on 10.14.03 meeting. The addition of attribute #define/string-names to C language header section.
11.04.03	0.81	C. Alimpich	Added attributes/values to compliance table for SeparatorSheet, Stitching, Subscription, and Trimming objects. Removed header file contents (section 5.4).
11.11.03	0.82	G. Petrie	Re-arranged section 4.2. Added discussion table at end of file.
08.09.04	0.84	G. Petrie	Major rewrite of format
09.22.04	0.91	G. Petrie	Removed range, units, type, related columns from attribute tables. Fixed return code for top level api's. Added / deleted object and/or attributes based on group discussion.
10.25.04	0.93	G. Petrie	Fixed typo and errors.
01.18.05	0.96	G. Petrie	Incorporated UML and C Header updates